



राष्ट्रीय फैशन प्रौद्योगिकी संस्थान, कन्नूर  
( वस्त्र मंत्रालय, भारत सरकार )  
National Institute of Fashion Technology, Kannur  
Ministry of Textiles, Govt. of India  
( An ISO 9001:2008 Certified institute )

File No.49/NIFT/KAN/ADMIN/Sewage Plant/2012 (PART-III)

Date 28/07/2022.

### QUOTATION NOTICE

NIFT-Kannur invites quotations from the supply and installation of Dewatering monoblock pump for waste water pumping of existing STP. Intending vender who have GST registration may submit the quotation in the proforma enclosed (**Annexure-I**) and submit the same by hand /post/courier so has to reach the National Institute of Fashion Technology , NIFT Campus, Mangattuparamba, Kannur-670562 on or before 05/08/2022, 5.30pm

For your reference existing motor pump, specifications & photographs is attached.

### Terms & Conditions

1. All-inclusive (Taxes, duties , transportation ,loading ,unloading charge ,etc) rate to be quoted.
2. The Items shall be delivered within 7 days of the issues of the purchase order at NIFT, Kannur campus.
3. NIFT, Kannur will provide GST No. based on that GST invoice should be raised .
4. Payment will be made within 10 days against a satisfactory supply ,installation & commissioning of the items by the competent authority.

  
JOINT DIRECTOR

Copy for display on the notice board as per the list

1. Municipal office . Anthoor.
2. Village office , Morazha.
3. NIFT, Kannur Notice Board.

1/5

डिजाईन, मैनेजमेंट तथा टेक्नालॉजी का महाविद्यालय  
A Premier Institute of Design, Management & Technology  
Set up under an Act of Parliament

निफ्ट कैंपस, धर्मशाला , कानूल (पि.ओ), कन्नूर, केरल- ६७०५६२  
NIFT Campus, Dharmashala, Kanool (P.O), kannur, kerala - 670 562  
Phone : 0497 2784780 to 0497 2784786 Email: info.kannur@nift.ac.in

www.nift.ac.in/kannur

Quotation of supply & installation of Dewatering monoblock pump for waste water pumping of existing STP as per given below specification.

(Annexure-I)

Sr.No.	Items Name with specification	Unit	Qty.	Unit Rate (Rs.)	GST (Rs.)	Total Amount (Rs.)
1.	<p>1. <b>Make-</b> Crompton Greaves Ltd. (DWM, M32) or Kirloskar Brother Ltd. or equivalent</p> <p>1. <b>Type-</b> Dewatering (Waste Water) Monoset Pump with complete in all respects (Impeller)</p> <p>2. <b>Capacity-</b>1HP/0.75KW</p> <p>3. <b>Head-</b>11.5 mtr.</p> <p>4. <b>Size-</b> 40x40mm.</p> <p>5. <b>Speed -</b>2700 R.P.M</p> <p>6. <b>Head Range-</b>6.5-13 LPS.</p> <p>7. <b>Phase-</b> 3-Phase.</p> <p>8. <b>Voltage-</b>415V</p> <p>9. <b>Frequency-</b> 50Hz.</p> <p>10. <b>Inlet/outlet-</b> 50mm</p> <p>11. <b>DIA-</b> 116 mm.</p> <p><b>Required Quantity - 1 set</b></p>	Nos.	01			
2	<p>1. <b>Make-</b> Crompton Greaves Ltd. (DWM, M32) or Kirloskar Brother Ltd. or equivalent</p> <p>2. <b>Type -</b>Dewatering (Waste Water) Monoset Pump with complete in all respects (Impeller)</p> <p>3. <b>Capacity-</b>3HP/2.2KW</p> <p>4. <b>Head-</b>12/25.5 Mtr.</p> <p>5. <b>Size-</b> 50x50mm.</p> <p>6. <b>Speed -</b>2900 R.P.M</p> <p>7. <b>Head Range-</b>560-/80 LPS.</p> <p>8. <b>DIS-</b>560/80 lps</p> <p>9. <b>Phase-</b> 3-Phase.</p>					

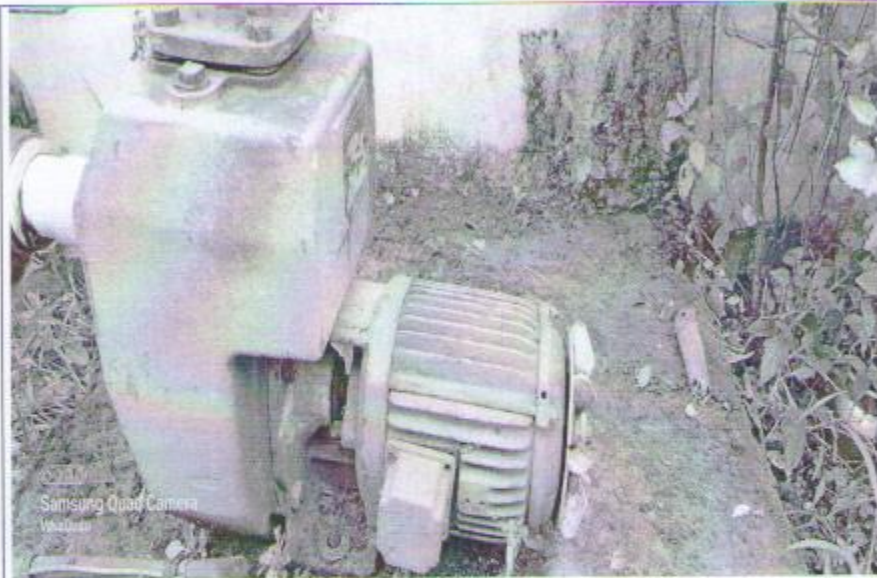
*Wm*

	<p>10. <b>Voltage</b>- 415V &amp; 50Hz.  11. <b>Frequency</b>-50Hz.  12. <b>Inlet/outlet</b>- 63mm.  13. Delta Connection  14. <b>Quantity Required</b> - 2 set.</p>	Nos.	02			
3	<p>1. <b>Make</b>- Crompton Greaves Ltd. (DWM,Q-5) or Kirloskar Brother Ltd. or equivalent  2. <b>Type</b>-Dewatering (Waste Water) Monoset Pump with complete in all respects (Impeller)  3. <b>Capacity</b>-5HP/3.7KW  4. <b>Head</b>-12/25.5 Mtr.  5. <b>Size</b>- 80x80mm.  6. <b>Speed</b> -1450 R.P.M  7. <b>Head Range</b>-9/-19.5 LPS.  8. <b>DIS</b>-1125/400  9. <b>Phase</b>- 3-Phase.  10. <b>Voltage</b>- 415V &amp; 50Hz.  11. <b>Frequency</b>-50Hz.  12. <b>Inlet/outlet</b>- 90mm.  13. <b>Solid Handling</b>-15.5mm  14. <b>Duty</b>-S1  15. Delta Connection  <b>Quantity Required</b> - 1 set.</p>	Nos.	01			
4	<p>Erection, trial running and commissioning, materials including civil foundation for fixing items at the appropriate position and connect the existing section and delivering line of STP . Which include its electrical wiring work etc. of 4 nos. pump.</p>	Job.				

\*GST Registration copy should be enclosed along with quote

Supplier Name :  
Signature with office seal:

Existing equipment along with specification (MOTOR – 1)

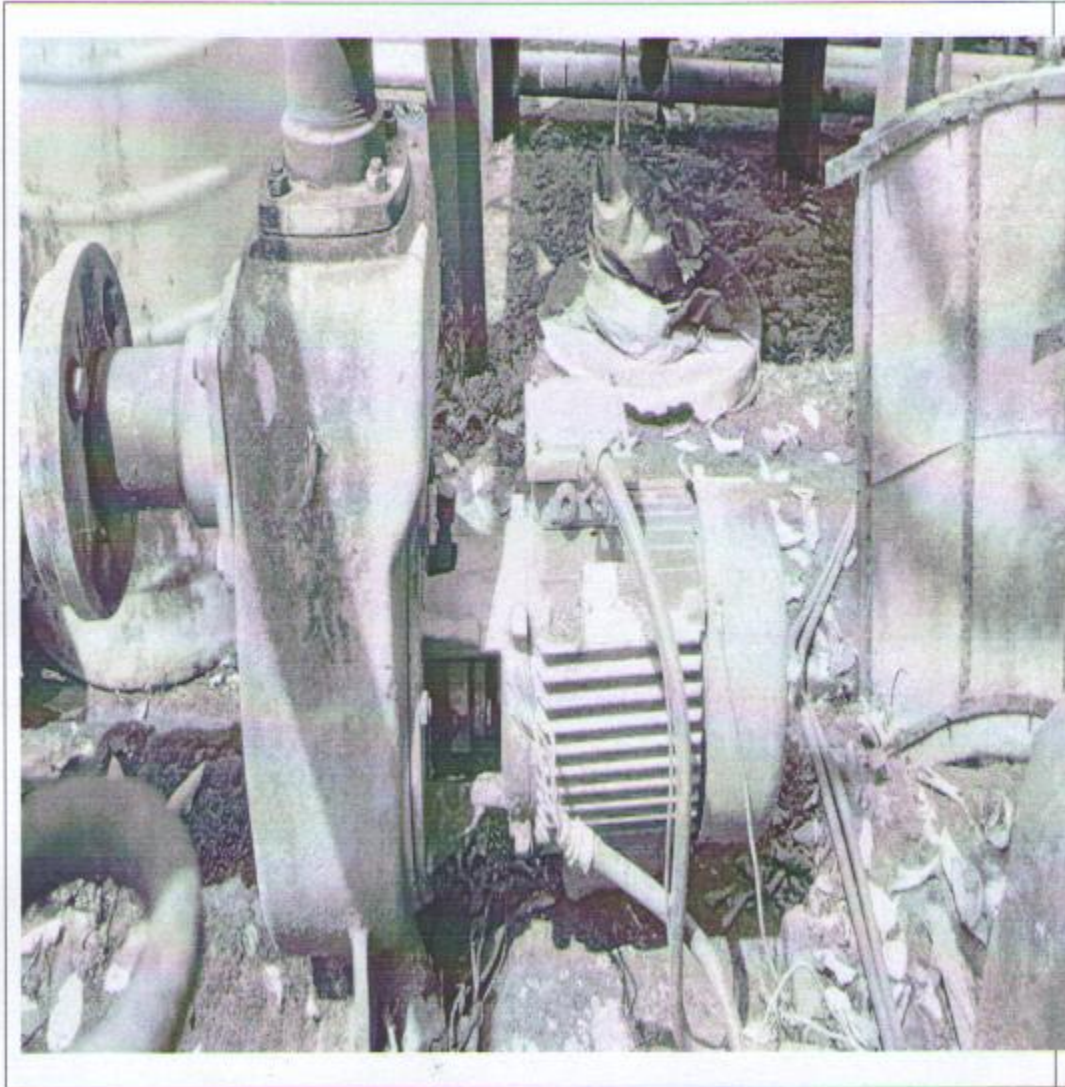


Existing equipment along with specification (MOTOR – 2)



*Handwritten scribble*

Existing equipment along with specification (MOTOR - 3)



Crompton G		
DEWATERING M		
HP	3.70 / 5.00	
VOLTS	415	+6%-15%
SPEED	1450	RPM
DUTY	S1	
3 PHASE	50Hz	
HEAD	9 / 19.5	M
PUMP NO.	L45B 00	

Motor