

FAQs for Hostels

Q 1: What is the process of allotment of seat in the hostel?

Ans: Once you report to the campus, you will have to visit the Accounts Department to pay the hostel and mess fee (NEFT/Cheque); from there, you will collect the receipt and show the same to the hostel authorities for the allotment of room. Along with this, you will have to submit the duly filled Hostel Form and Room Allotment cum Undertaking forms, the same can be downloaded from the NIFT Jodhpur official site under the Hostel section.

Q 2: Whether we will have any say while selecting the room and roommates?

Ans: Sorry, as per the hostel policy, neither you would be allowed to choose the room nor the roommates as the hostel authorities would do it.

Q 3: Will our parents be allowed to enter the campus with us?

Ans: Yes, parents are welcome on the campus, but as per the hostel policy, they can't enter inside the hostel's room.

Q 4: What is the important stuff we have to bring?

Ans: Bring your recent passport size colored pictures (10-15), original documents, and other stationery items. The hostellers should bring mattresses, pillows, bedsheets, curtains, pillow covers, blanket, lock and key (2), mirror, bucket, mug, toiletries, dustbin, broom, dustpan, cloth pegs, and other essential items as deemed appropriate. The same could be purchased from the stalls set up by the private vendors for the convenience of students, especially those coming from distant places.

Q 5: What kind of things are not allowed in the hostel?

Ans: Liquor and tobacco products are strictly prohibited in the hostel and institute premises as a policy of the institute. It is noteworthy that we do not permit the possession of electrical/electronic items such as electric iron, heater, induction cooker, rice cooker, boiler, etc., except for mobile phones and laptops/tabs in the hostel rooms. If anyone is found guilty of keeping/ using the banned electric/ electronic items, a fine of Rs.250/- will be imposed for possessing such things, and the same will be confiscated.

Q 6: What is the sharing capacity of rooms in hostels?

Ans: Currently, we have triple occupancy rooms in the girl's hostel and double occupancy rooms in the boy's hostel.

Q 7: Is there any dress code in campus?

Ans: No, there is no set dress code, but the students are expected to wear proper dresses inside the campus and observe mess etiquettes.

Q 8: How to commute from college to Jodhpur city and vice versa?

Ans: We provide college transport to the hostlers to purchase utility items during the weekend. However, a stationery cum departmental store and Amul parlor are also there inside the campus. During the working days, the students can commute by auto, city bus, and private cabs. Grocery stores, restaurants, guest houses, and medical shops are also nearby (within walking distance).

Q 9: What is the system or process for hostellers to visit their hometown?

Ans: Parents are expected to share their valid email Id and mobile number in the hostel form when their ward joins the hostel. Later for the leaves, they will have to send a mail to the hostel authorities at girlshostel@nift.ac/boyshostel.jodhpur@nift.ac.in and to the concerned Course Coordinator (CC) from their registered mail ids. The students can collect the leave forms from the stationary. The parents might be contacted to verify any authorized movement of the hostellers. For more details, you can refer to the Hostel Rule Book.

Q 10: Are there A/C and Non A/C rooms for hostellers?

Ans: Yes, we have A/C rooms for girls and Non-A/C rooms with cooler facilities for boys.

Q 11: What basic infrastructure has been provided to the hostellers?

Ans: A basic bed, study table, chair, and cupboard are assured to every boarder with air conditioning /Non-AC alongside attached bath/common facility as opted for.

Q 12: What types of facilities do you provide to the hostellers?

Ans: Facilities include 24x7 security, 24x7 power back up, 24x7 internet connectivity, RO on every floor, geyser, laundry facility, sports facilities, first aid, medical facilities, and common room has a TV, microwave oven, and iron.

Q 13: Do you have a separate mess for girls and boys?

Ans: No, we have a combined mess for girls and boys.

Q 14: What are the hostel mess facilities?

Ans: The hostel mess is run by the contract companies. Currently, Premanand Catering Pvt. Ltd. are providing the services. The menu will be displayed on the notice board. Changes to the menu can be made through the mess committee. In addition to the mess service, canteens and food courts are also available for students' use.

Q 15: What about the cleanliness of the hostel room?

Ans: The room's cleanliness is the student's sole responsibility. The student has to maintain the room's hygiene and keep the room's belongings in order. The housekeeping staff will clean the corridor, washrooms, and other common areas.

Q 16: Do you have attached toilets in the hostel rooms?

Ans: No, we have a shared bath block on each floor. In this block, we have put geysers (to be used during the winter season), urinals, Indian and Western commodes, bathrooms, and washbasins.

Q 17: Are there any regulations of timings for the hostellers?

Ans: Yes, the student must return to the NIFT campus before 08:00 PM and hostel premises before 10:00 PM. Late reporting to the hostel will be informed to their parents. Habitual late reporting will be considered as an act of indiscipline, and if any student repeats this more than three times in a semester, then the student will be debarred from the hostel. Any unauthorized absence in the night will amount to an act of indiscipline and is liable to be expelled without any warning.

Q 18: Do you have a gymnasium for students?

Ans: Yes. Both boys' and girls' hostels have a separate gymnasium with essential equipment for exercise.

Q 19: Do you have indoor and outdoor sports facilities?

Ans: Yes, we do have the following games facilities-
Indoor games- Chess, Carom, and Badminton
Outdoor games- Cricket, Football, Volleyball, and Basketball.

Q 20: Do you offer Wi-Fi facility to hostellers?

Ans: Yes, we provide a Wi-Fi facility to the hostellers.

Q 21: What are the banking facilities on the campus?

Ans: One Bank (Union Bank of India) and 1 ATM are on campus. ATM of SBI is also there within walking distance.

Q 22: If some hosteller falls sick or gets injured, what actions are taken by the administration?

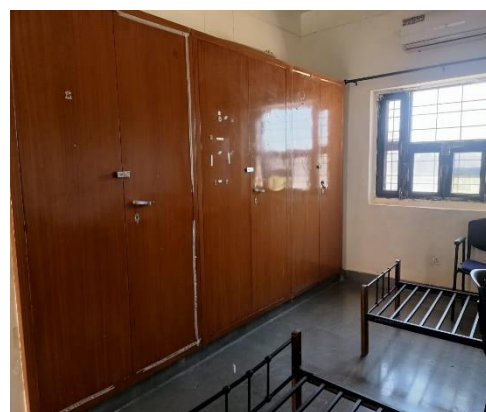
Ans: We have a first aid medical kit available in each hostel. We also run OPD between Monday – Saturday during the daytime, and a medical practitioner and psychologist are available to provide a free consultation to the students. Other than this, one nurse remains on the campus during the daytime. We have a 24x7 cab facility to take the ailing student to the hospital in the proximity of the college. During the night time, the hostel guards accompany the injured/sick students.

Q 23: What about the security of the students on the campus?

Ans: The entire campus is highly secured, and so are the hostels. Nobody can enter the hostel without permission as we have deputed 24x7 professional security guards to avoid any untoward incidence. Further, the entire campus is under the surveillance of CCTV cameras round the clock.

There are regular rounds of hostel warden in morning and evening sessions. The absentees are followed up, and anyone found ill is taken to the hospital. We have a provision to take night attendance of hostellers. Anybody found missing in the hostel is immediately brought to the parents' attention over the phone.

Girl's Hostel



Boy's Hostel



Contact Details-

For hostel-related queries, you can contact hostel wardens-

***Girl's Hostel:* Ms. Heera Sisodiya (Assistant Warden) 9983312727**

***Boy's Hostel:* Mr. Vipin Gahlot (Assistant Warden) 9660723007**