

**NATIONAL  
INSTITUTE OF  
FASHION  
TECHNOLOGY**

Ministry of Textiles,  
Government of India

**ADMISSIONS**

**2021**



An Institute of Design, Management & Technology  
A Statutory Institute governed by the NIFT Act 2006



# NIFT VISION

To emerge as a centre of excellence and innovation, proactively catalysing growth of fashion business through leadership in professional education with concern for social and human values





## Message from Chairman

For millennia India's major industry reflecting its craftsmanship and culture has been its textiles and clothing manufacture and today the National Institute of Fashion Technology is the leader in the development of human resources for its future growth.

NIFT focuses on imparting to students the latest in technology and innovation in all aspects of integrating the entire value chain from fibre to fabric to fashion for the textile industry. Students are also encouraged to respect and derive the best from our own traditional arts and handicrafts.

NIFT is a pioneer and the undisputed leader in Fashion Education for the last 30 years in India. Starting in 1986 from a single location in New Delhi, today it provides an environment for creative excellence and fashion technology innovation to the young minds at the 16 campuses across the geographical expanse of India. NIFT has continuously strived to adopt the global standards in fashion education by aligning its teaching methods to interactive and evolving education systems, aimed at creating a unique learning experience that blends heritage, cultivates aesthetic virtuosity in an environment of freedom of inquiry and cognition.

At NIFT, multidisciplinary studies not only prepare the students to solve real life challenges but also equip them to carve out newer paths for themselves. The alumni of NIFT are recognised as adept professionals in a multitude of creative fields, and their success stories are a source of pride for the institute.

Industry-Academia interfaces throughout the course provide a cutting-edge learning experience to our students. The body of learning encompasses, acquiring knowledge, skill building and practical application - in addition to sensitising students to cultural and social contexts, which is vital in personality building and develops individuals as change agents in the society.

With this spirit, I welcome you to join the NIFT community and be part of this exciting journey !

**Rajesh V. Shah**  
Chairman





## Foreword

Established in 1986 and given status of a Degree awarding institution under the National Institute of Fashion Technology Act, 2006, NIFT is the byword for excellence in fashion education and research, in India. NIFT has been the natural destination for students seeking to pursue a career in fashion in all its varied hues & manifest forms including design, communication, technology and management over the last 30 years of its existence.

NIFT provides a unique environment for nurturing the creative talent in the field of design and other associated fields in fashion. The key differentiators of NIFT that help you to grow and set you apart are:

- A vibrant stimulating learning environment to mould the fashion leaders of tomorrow
- An experienced & engaged faculty with innovative pedagogy
- An engaging curriculum benchmarked to international standards
- 16 professionally managed campuses located in cities that radiate our rich Indian culture and plural cultural traditions
- A unique engagement model for students to realize synergistic outcomes from confluence of ideas of industry leaders, academia, and artisans
- Networking with alumni, many of whom are icons in their own right, for building professional relationships and unlocking opportunities.
- And our ethos of giving back to the society at large by engaging with various craft clusters and working closely with them in improving the quality of life of the artisans across the length & breadth of nation.

Destiny beckons you to the portals of NIFT for an enduring and rewarding journey of creative learning and leadership in fashion!

**Sarada Muraleedharan, IAS**  
**Director General**





## TABLE OF CONTENTS

NIFT - The Institute

Accreditation

Academic Strategy

Global Connect

Assets

Infrastructure

Student Facilities

Administration

Campus & Course Options

Admission Guidelines

Fee structure





## THE INSTITUTE

National Institute of Fashion Technology is a leader in fashion education with the ability to integrate knowledge, traditional arts, contemporary thought, academic freedom, innovations in design & technology and creative thinking to continuously upgrade its curriculum to address the changing needs of the industry. Its history of 30 years at the pinnacle of fashion education stands as a testimony to its focus on core values where academic excellence has been nurtured. The institute has stood as a beacon of industry-academia engagement, a key enabler in developing competent professionals.

National Institute of Fashion Technology (NIFT), set up in 1986 under the guidance of Ministry of Textiles, Government of India, is a Statutory Institute Governed by the NIFT Act 2006. Bringing in a wide range of aesthetic & intellectual orientations, the early instructors included leading progressive scholars from Fashion Institute of Technology, New York, USA.

The in-house faculty was drawn in from a distinguished group of intellectuals who put forth a sense of dynamism creating a pathway to effective learning. Pupul Jaykar Hall at NIFT headquarters in New Delhi is a reminiscence of many educational thinkers and visionaries

who have been instrumental to the institute's road map to success.

Academic inclusiveness has been the key thought in the expansion plans of the institute. NIFT, today, has spread its wings across the length and breadth of the country. Through its 16 professionally managed campuses, National Institute of Fashion Technology provides an excellent environment to its students from different parts of the country achieve their highest potential through the programmes offered. Since the early years of its inception, the institute has provided a firm foundation in fashion education in the domains of Design, Management and Technology. Since then, NIFT has continued to set and achieve higher academic standards.

The faculty of the institute is drawn from a community of leading practitioners, education enthusiasts, entrepreneurs, creative thinkers, researchers & analysts.

Over the years NIFT has strengthened its academic strategy. Invigorating thought leadership, research stimulus, industry focus, creative enterprise and peer learning have reinforced the institute's academic bedrock. Fostering a new generation of creative thinkers, the institute is empowered

to award Degrees in undergraduate, post graduate and doctoral studies. In pursuance of its objective of providing comprehensive world class academic learning environment, the institute has entered into strategic alliances with leading international institutes.

NIFT is committed to academic excellence in fashion education. The vision of the institute embraces challenges and provides the impetus in setting highest academic standards. NIFT continues to strive to be nothing but the best.

### ACCREDITATION

NIFT Act 2006 published in the Gazette of India on 14th July, 2006 confers Statutory Status on the institute. The Act came into effect from 1st April, 2007. The President of India is the 'Visitor' of the institute under the Act. The Act empowers the institute to award Degrees and other distinctions. NIFT is the first premier institute in India to award its own Degrees in the field of fashion education.

The Degrees awarded by the institute are recognised by the academia worldwide. The institute confers Degrees to the graduates in the Convocation Ceremony

marking the occasion when the students leave the realms of the institute to take up key leadership positions in the industry.

### BOARD OF GOVERNORS

In accordance with NIFT Act 2006, the Institute has a Board of Governors comprising key officials and experts from different areas. Members of Parliament, Representatives of the Ministry or Departments in the Government of India, eminent industry experts and educationists broadly comprise the Board of NIFT. NIFT Board is responsible for the general superintendence of the institute and for steering the institute & providing direction in related matters.

## ACADEMIC STRATEGY

The academic strategy of the Institute places the students as one of its prime assets. The Institute capacitates an annual enrolment of about 3000 students across sixteen campuses of study. The institute is committed to providing a stimulating environment to encourage learning.

## NEW DIMENSIONS

Education can be used to investigate new dimensions, which are aimed at pedagogical affordances of altered ways of thinking. Educationists have devised a range of methods and strategies for fashion education. Identifying principles of good learning, NIFT has developed its philosophy of progressive thinking. Over the years, the institute has emerged as a hub of innovation in the realm of design, management & technology. NIFT prepares students to provide solutions for challenges within the fashion domain.

## INTEGRATED LEARNING

NIFT lays emphasis on inquiry-based teaching and learning. The academic core is designed, to facilitate multidisciplinary study that assimilates aesthetic and industrial dynamics across levels and disciplines. It is this integrated learning at NIFT that provides a unique platform to its students transforming them into professionals and preparing them for a wide variety of careers. Cutting across specialisms, the students are encouraged to work with a cohesive approach to learning.

## INDUSTRIAL DYNAMICS

The emphasis is on professional development of students. The pedagogy promotes interactivity and is critical to students' understanding, development and maturity. Students undertake classroom and workshop assignments, conduct field studies, participate in group discussions and critique sessions. Hands-on experience on live industry projects allows the students to brace

themselves for the industry and other entrepreneurial possibilities.

The course curriculum accommodates student interaction with the industry through internships, bringing in requisite insight and appreciation of industry diktats.

## GRASSROOT CONNECT

As a leader of fashion education in India, NIFT realizes the importance of its social responsibilities and continues its endeavour to create grounded designers who are able to appreciate and promote the various crafts of India. NIFT has implemented a new Craft Cluster Initiative, which provides the students with continuous exposure to Indian culture and traditional handloom and handicraft clusters of India, thus providing an opportunity for creative innovation and experimentation at the grass root level. It is envisaged that the craft exposure will help the NIFT students to become 'Young Change Agents' and utilize the skills of the handloom and handicraft sectors for developing niche contemporary products. The experienced NIFT faculty will contribute by monitoring the student activities, offering customized training programmes and sharing design inputs, thereby enhancing the commercial value of products being manufactured by the artisans. Such exposure and interactions provide a stronger rural connect and a greater understanding and appreciation of Indian culture and aesthetics to the young design professionals.

## CRITICAL APPRAISAL

Critical appraisal at every step encourages self improvement. The evaluation system closely monitors the students' evolution through the course study. The evaluation pattern focuses on the gamut of learning practices and corresponding evaluation tools like task-based assignments, research papers and written examinations throughout the academic calendar. Interactive juries and viva-voce provide qualitative evaluation in the overall

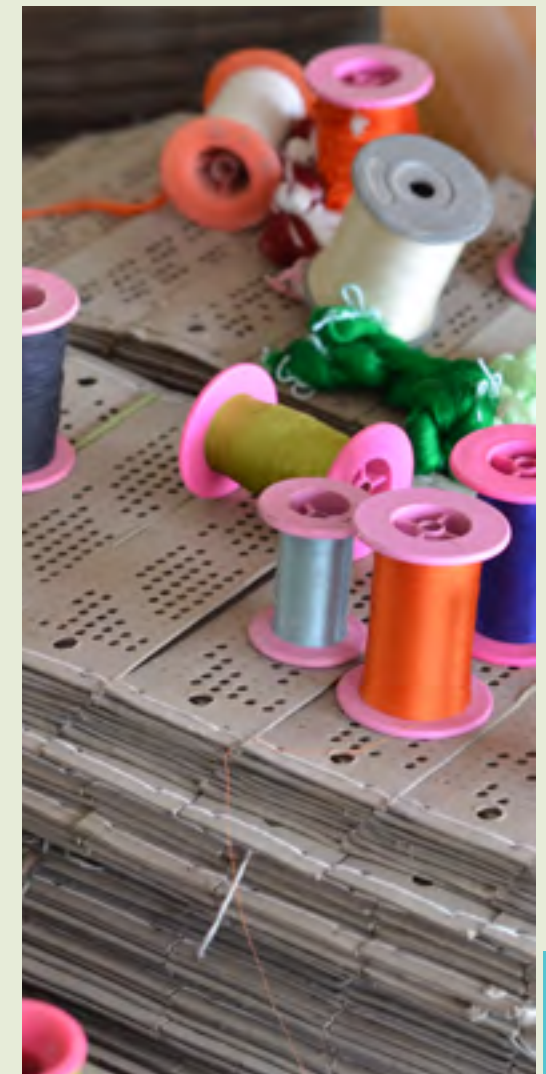


growth of the students. The critical appraisal also assesses the students' ability to collate and correlate learning from various inputs as a demonstrated outcome through presentations and displays.

## TEAM BUILDING

With a view to encourage team building, trust & motivation among students, the institute conducts an outbound workshop for students as a part of the academic plan in a few programmes. The workshop aims to put the 'bigger picture' in front of the students and helps them to introspect and discover oneself from a fresh perspective. 'Behavioural training' complements the classroom inputs to maximize learning.

The workshop integrates aspects like teamwork, planning & co-ordination, personal & social communication, lateral thinking, self exploration and self realization. The facilitators use campsites and other tools like adventure activities, camp games, natural settings, local people & their habitat to provide qualitative learning experiences.







## GLOBAL CONNECT

The academic strategy of NIFT embraces a global approach. The core activities of the institute have enhanced its international visibility and standing. NIFT has strategic agreements and partnerships with about 33 leading international fashion institutes & organisations that share the same academic direction, integrating NIFT students with the global mainstream of fashion.

International collaborations allow students to experience 'study abroad' options through exchange programmes. This initiative provides an excellent opportunity to NIFT students, selected for the exchange programme, to interact with students from various geographies, encouraging them to broaden their vision and understand different cultures. The opportunity can be undertaken by the students across NIFT campuses and all course disciplines. To provide an academic gradient, the institute's international linkages allow the students to participate in international competitions / seminars / research / exhibitions and other events.

NIFT students at all campuses are encouraged to participate in international events and competitions. The students have participated and won laurels in several prestigious international competitions like Mittelmoda Premio, World of

Wearable Art, New Zealand; Arts of Fashion Foundation USA; Triumph Inspirational awards, IAF Designer Awards in Medellin Colombia; Click! Japan Photo Contest Exhibition, Knitting For Juliet Italy; MAX Design Awards; E.A.T-Exporting Art Together. The institute also attracts international students who come and experience its academic and cultural richness. Through the exchange programmes, students from overseas institutes have developed valuable insight not just into Indian culture, arts & crafts but have also understood the Indian market and its dynamics. The students of Management & Technology have had invaluable exposure to production techniques that cater to high fashion demands of the global marketplace.

NIFT offers craft sensitization tour and industry tour to its foreign partner universities. This year NIFT organized the same for KEA - Copenhagen School of Design and Technology, Denmark in March 2017, where 18 KEA students along with 2 faculty members visited Panipat, Jaipur and Jodhpur.

The strategic alliances encourage academic enhancement at faculty level as well. Faculty exchange and joint research initiatives ensure that the institute's teaching methods and facilities are constantly updated & upgraded to be at par with the best institutes in the world. To facilitate

exchange of teaching pedagogy, concepts and professional ideas, the faculty at NIFT participates in academic exchange programmes, international fairs, seminars, exhibitions, conferences and trade shows thereby bringing their substantial experience to the classroom thus enriching the knowledge pool at NIFT.

Some of the key institutes with whom NIFT has an association are Queensland University of Technology, Australia; De Montfort University, UK; Glasgow School of Arts, UK; Swiss Textile College, Switzerland; Mod Art International, France; ENSAIT, France; NABA, Italy; The State University of New York College at Buffalo, USA; Manchester Metropolitan University, UK; ESMOD, Germany; Saxion University of Applied Sciences, Netherlands; Amsterdam Fashion Institute, Netherlands; Bunka Gakuken University, Japan; Donghua University, China; BGMEA University of Fashion and Technology (BUFT), Bangladesh; Ecole Duperré, France; University of Northampton, UK; Politecnico di Milano, Italy; Shenkar College of Engineering & Design & Art, Israel; KEA - Copenhagen School of Design and Technology, Denmark; North Carolina State University, USA and many more.

students from NIFT, a unique opportunity to obtain a Dual Degree from both NIFT and FIT. Students from NIFT undertake two years study at the home Institute intercepted by one year of study at FIT. Thereafter, the students resume their studies at NIFT to obtain the Dual Degree from both the institutes. 45 students have completed the dual degree program in the last 5 years and sixteen NIFT students from various disciplines are shortlisted for the Dual Degree opportunity in 2017-18 at FIT.



## DUAL DEGREE OPPORTUNITY

NIFT - Fashion Institute of Technology (FIT), New York, USA strategic partnership allows select meritorious



## ALUMNI



As leading agents of change, NIFT Alumni are reconfiguring the institute's constellation of achievements and success stories. The alumni are adding value in different work scenarios, both in India and overseas.

About 23010 alumni are working with the industry in key decision making positions and are instrumental in shaping the future of fashion business.

Some of them are brands themselves. Others are excelling in the domain of entrepreneurial dynamics.

NIFT alumni are also actively taking their knowledge to the grassroot levels, working towards enhancement of the craft pockets of the country.

The linkage between Alumni and their alma mater continues. NIFT has the significant opportunity to benefit from the network of its graduates.

NIFT has always valued this resource and has involved the alumni in the future direction of the institute.



## FACULTY

Faculty at the institute articulates the expertise & dynamism that inspires the students to realize their full potential. NIFT faculty builds critically engaged teaching practices while testing its relevance through a wide range of projects and contexts.

Students enhance their knowledge and develop their talent by working with the faculty on various real life projects gaining invaluable knowledge, experience and awareness on design application and industry dynamics. In the recent past, faculty & student teams have undertaken varied research and consultancy projects for Air India, EDMC, IRCTC, CATS etc. NIFT has also undertaken capacity building through Skills Development training for Raymonds, CBSE, JSS, DONER, CIDCO, NSCFDC etc.

NIFT faculty is the strategic enabler in transforming the vision of the institute into reality. Trained at some of the leading fashion institutes of international repute, the faculty brings to the classroom professional capabilities, wide exposure and years of hands-on industry experience. Engaging in doctoral studies, the faculty is committed to grow in their profession.

The faculty constantly upgrade their knowledge & skills, creating a stimulating learning environment for students.

Faculty paper presentations in the interernational circuit, participation in seminars & symposia of high repute enable world class academic discourse and knowledge transfer.

In the near future, NIFT intends to address questions of major importance to global society.

The institute aims to have research studies centered around human importance.

The strategy shaped by the faculty aims at a distinctive ability to create an influential research-intensive environment.

Effectively playing the pathfinder's role, the faculty pool is working towards enhancing the research profile of the institute, fostering a new generation of 'leaders of the future'.





# INFRASTRUCTURE

The vision of NIFT ensures that it has a physical environment that reflects the institute's academic ideals. The Institute provides state-of-the-art infrastructure and equipment to impart both theoretical and practical training to its students. The facilities and services offered to the students allow them the freedom to explore, experiment and create.

## RESOURCE CENTRE

In the 21st century, information is the most important resource and knowledge management is the most crucial function in an organization. The Resource Centre (RC) in each NIFT Campus provides the necessary infrastructure to collate and disseminate this critical input.

The Network of NIFT Resource Centres is the only Fashion Information System in India serving the fashion professionals, would-be professionals and fashion educators. Its integrated collection of print and non-print materials is the only systematically documented source of information available in India for the study of international and contemporary Indian fashion. The system is a decentralized network, partially automated and is co-ordinated by the National Resource Centre (NRC) at NIFT, New Delhi. The Resource Centres also provide information services to the design community and the industry.

## Collections

Following are the highlights of the collections:

- The print collections include books and periodicals pertaining to fashion studies and related disciplines.
- A rich collection of e-books and other digital resources including leading online databases are available for reference.
- All RCs subscribe to leading international fashion forecast services and journals on Fashion and Textiles.
- The audio-visual materials in CDs and DVDs are primarily used as teaching aid. AV collections pertain to history of costume and art; fashion illustration, garment manufacturing and design collections of NIFT graduates.
- The reference collections of RCs comprise manuals, standards, reports, news clippings, trade catalogues from manufacturing industries and retailers; and other information sources.
- RCs showcase designer clothing and regional costumes of India. International collections include costumes from different countries of the world and garments from leading multinational fashion houses. Selective design collections of the graduating students (now well-known designers) are documented and inventoried in RCs.

- The Textile collections in RCs have fully documented and methodically arranged collections of fabrics (displayed fabric and region-wise), export fabrics and latest international fabrics procured from leading trend services.

- RCs also have collections of Fashion Accessories and Findings containing all the materials required to complete a garment.

## Services

All RCs use e-Granthalaya, an integrated multi-lingual library management software, developed by the National Informatics Centre (NIC) for collection management and offering numerous proactive information services. The significant features of the system include Union catalogue, Web OPAC, Advanced search, Article Index, Barcode based circulation and Cloud Ready Application.

## Reference Services

Highly qualified professional staff offers reference service through online mode as well as in print.

## Online Public Access Catalogue (OPAC)

RCs using multi-user version of the library management software offer access to the catalogues of print and non-print collections via both LAN and the Internet.

## Bibliographic Service

Subject bibliographies on topics relevant to the fashion industry are available online. Bibliographies on any topic are also printed on demand.

## Indexing Service

Online indexing service is an important research tool for easy retrieval of journal literature on fashion and related areas in the NIFT library.

## Current Awareness Service

Lists of new additions to the collections of books, audiovisuals and periodicals are available online.

## Circulation service

All RCs offer circulation services for selective collections of recommended reading materials. The bar-coded charging system ensures data accuracy and fast check-in and check-out at the circulation counter.

## Reprographic Service

Selective reprographic services of photocopying and scanning are provided to the users at all RCs. Thematic displays and exhibitions are organized occasionally.

## Digital Repositories Development

The Resource Centres are engaged in developing digital repositories of institutional research and publications. Valuable print and non-print collections are being converted into electronic format. The entire reference collections of graduation project reports, audio-visual materials, textiles and costumes spread across the network of RCs are being digitized into an interactive multimedia format.

**\* Collections and services vary from Campus to Campus**





## ART LABS AND STUDIOS

### COMPUTER LABS

In this era of digital transformations, the success of fashion professionals rests on their ability to integrate fashion and information technology in a meaningful way. The information technology infrastructure is playing a key role in providing an IT-enabled learning environment, with the objective of developing computer savvy, well-rounded professionals. All academic departments maintain computer labs thereby integrating IT with the academics. The computer labs are well equipped with state-of-the-art equipment like Macintosh work stations, Desktops, Plotters, Digitizers, Image Scanners, Wide Format Printers, Sound Mixers, Digital Cameras, etc.

All NIFT campuses are covered by the National Knowledge Network (NKN) with connecting speed of 100Mbps/1 Gbps. Video conferencing facilities are available for inter-Campus communication. NIFT campuses have fully Wi-Fi enabled setups offering access to secure Internet for the students and faculty. This allows learning to move outside the classroom where students can discuss, learn and grow. All academic programmes of NIFT offer IT applications as part of their curriculum.

NIFT imparts teaching inputs in industry specific CAD software for Apparel Design, Textile Design, Graphic Design and Accessory Design programmes.

Apart from the specialized industry specific software, IT inputs for Animation, 2D/3D Modeling, Photo Imaging and Editing, Enterprise Resource Planning, Product Lifecycle Management, Production Planning and Scheduling; Statistical Analysis and Web Programming are integrated into the academic curriculum.

The institute promotes brilliance without boundaries. Students from different disciplines are encouraged to use art labs & studios across disciplines. This integrated approach to learning promotes interactivity, arriving at one creative language. The Institute invests in the latest equipment to introduce the updated teaching practices to the class set.

### PHOTOGRAPHY LAB

Photography lab includes the most advanced hardware used by domain experts. It is equipped with state-of-the-art suspended Elinchrom lights and motorized backdrops, various accessories like diffusing materials, extensions & radio triggers, Manfrotto tilt-pan tripods etc. enhance the learning experience for students. The infrastructure provided not only helps students develop awareness of old and new photography practices but also assists them in realizing ambitious production based projects.

### PATTERNMAKING AND DRAPING LABS

Course disciplines imparting inputs in apparel design & apparel technology, maintain pattern making & draping labs. These labs are stocked with specialized pattern making tables & dress forms.

The infrastructure provides an environment that allows the students to rigorously apply and contextualize concepts and processes of realizing garments.

These labs are the breeding ground for heightened creativity, unique approach and innovative perspectives in relation to garment making.

### WEAVING LAB

Textile Design Department maintains a weaving lab that is equipped with tabletop sample looms, offering an effective integration of theoretical and practical inputs to students. The infrastructure provides a creative space for students to arrive at a holistic approach to enquiry and exploration from an individual perspective in relation to materials, processes and methods within the domain of woven structures.

### DYEING & PRINTING LAB

Most NIFT campuses are equipped with a Dyeing & Printing lab that is maintained by the Textile Design Department. The lab provides a stimulating learning environment where the students test their theoretical knowledge by gaining practical insight

and exposure. The infrastructure allows the students to understand, appreciate and learn different dyeing and printing techniques.

### TECHNOLOGY LABS

NIFT realises the significance of the role of Technology in modern technical education. The technology labs not only support the classroom teaching but also enhance academic deliverance by providing practical insight to the students. The Institute has developed well-stocked Technology labs at all campuses.

### KNITWEAR LAB

The Department of Knitwear Design is equipped with state of the art machinery required to familiarize the student with industry set-ups.

This includes specialized machines for seaming and finishing fine-gauge circular knit fabric as well as manual flat-knitting and linking machines.

The laboratories house computerized flat and circular knitting machines, facilitating an understanding of CAD. This infrastructure provides the students with an opportunity to explore practically and develop design possibilities in their field.





## **GARMENT TECHNOLOGY LAB**

Most NIFT campuses are equipped with specialized labs specific to garment technology. RFID fitted lab, ETON system lab, patternmaking lab etc., provide a complete learning environment to students creating a pathway to unmatched career opportunities in the apparel industry. The infrastructure provides an ideal sensitization to contemporary practices in apparel technology methods and techniques.

## **ACCESSORY DESIGN LAB**

Owing to a strong industrial approach, Accessory Design Department maintains a state-of-the-art lab that houses machines & equipment essential to material handling techniques, model and prototype making. Laser cutting machines and metal & wood lathes allow the students to integrate theoretical knowledge with substantial practical learning. Determined by the Campus-specific course specialization, the lab provides a stimulating workspace for students to acquire a holistic understanding of machinery and material.

## **LEATHER DESIGN LAB**

The Department of Leather Design allows students to gain hands on experience in processes and methods in relation to handling leather as a material. The department maintains a well-equipped lab that houses the latest technology in sewing and finishing for leather apparel & accessories. Infrastructural framework of machinery for cutting,

sewing, fusing, engraving, embossing, skiving, etc. helps students develop an understanding of practical knowhow to realize their design potential to the fullest.

## **AMPHITHEATRES & AUDITORIUMS**

NIFT aims at providing an exceptional student experience. The institute promotes academic inclusiveness but with an equal focus on student development through co-curricular opportunities. In most campuses, the amphitheatre is the hub of all student activity. Interesting architecture and high-end infrastructure allows students to indulge in a variety of activities in the amphitheatre. Film nights, dance recitals, music shows, intra-collegiate & inter-collegiate events are mostly conducted in the amphitheatre. Emphasizing on all round development of its students, the institute houses state-of-the-art halls / auditoriums. Some NIFT campuses are equipped with world-class hydraulic ramps that provide an in-house infrastructural framework for fashion shows and other creative pursuits. The halls / auditoriums provide the venue for peer and industry interaction through talk shows, seminars, exhibition & display.

# **STUDENT FACILITIES**

## **HOUSING**

NIFT facilitates residential accommodation for girls at most campuses. The NIFT hostels are run on a no profit/ no loss basis. All the hostel premises including the ones being run by private enterprises are provided with round the clock professional security, a doctor on call and hostel warden(s). Recreation facilities like television, some indoor and outdoor games are also available in the hostels.

## **DINING**

Most NIFT campuses are housed with a cafeteria that provides fresh, hygienic and healthy food at reasonable rates. The variety of food available and a friendly atmosphere makes the cafeteria an ideal place for students to relax and interact with their peers. Almost all cafeterias are Wi-Fi enabled, allowing the students to utilize their free time to the fullest.

## **HEALTH CARE**

Medical aid is available on campus. Every NIFT Campus provides an infirmary/ sickbay to its students. A doctor and nurse are available to attend to general medical concerns of the students. A psychologist is also available on Campus to counsel students.







# SCHOLARSHIPS & AWARDS

## RECREATION

Student Development Programme at all NIFT campuses has been institutionalised to encourage students to participate in extra-curricular pursuits making their stay at NIFT campus more holistic and complete. Participation in these activities complements academic studies while providing ways to socialize, relax and be revitalized to face day-to-day challenges of student life.

Students participate in wide range of activities through Student Development Activity Clubs viz., Cultural Club, Literary Club, Sports, Adventure & Photography (SAP) Club and Ethics, Social Service & Environment (ESSE) Club. Through the academic term, student clubs function in the activity hour called 'zero hour' every Wednesday evening. Also, at most NIFT campuses, a sports gymnasium is available to students.

'Fashion Spectrum', the annual fest of the institute provides a pulsating platform for students to showcase their talent in varied inter-collegiate and intra-collegiate activities & events. To promote interaction across campuses, the best of best from all campuses compete at 'Converge', an annual centralised cultural and sports event hosted by any one NIFT Campus.

## SCHOLARSHIPS & BURSARIES

The financial strategy of the institute places student development as a key priority. A considerable sum from NIFT Development Fund is effectively put to use in this core area every year.

To maximize the potential of its students, the institute's Means-cum-Merit Financial Assistance scheme allows students to avail subsidized tuition fee at every Campus. Determined by the parental income, students can fall into three slabs of monetary assistance.

Many students in the past have benefited from this scheme. Further, many leading organisations from the apparel sector have come forward to encourage NIFT students in their academic and creative quest. Pioneers in the related field have instituted awards & scholarships namely ITC, HomeShop 18 etc. to recognize and compliment academic brilliance. This provides motivation to the students, from their first year of study.

## AWARDS

NIFT honours students in three categories of Awards which are conferred at the time of the Convocation:

- NIFT Best Academic Performance Award: one student in each discipline at each NIFT Campus.
- NIFT Extraordinary Service Award: one student at each NIFT Campus
- NIFT Student of the Year: one student at each NIFT Campus

All three awards carry a citation, a gold medal and a cash component. NIFT also institutes awards in various categories for respective programmes which are given at the time of their graduation show/presentation.

## EMPLOYMENT SERVICES

NIFT I&AA (Industry & Alumni affairs Unit) facilitates on-campus placements for graduating students, enabling them to start their careers in challenging positions in the industry. Leading national and international apparel companies vie with each other to recruit NIFT professionals.

The star employers of NIFT professionals in the past from amongst the domestic companies have been Arvind Limited, Future Lifestyle Fashion Ltd., Madura Fashion & Lifestyle, Raymond Apparel

Ltd, Siyaram Silk Pvt. Ltd. , Globus, Proline, Titan amongst others. Leading buying offices like Gap, Li&Fung, Tommy Hilfiger, Triburg, Impulse-Next have been regularly offering key decision making positions to the graduates. Many international companies like Benetton, C&A, J.C. Penny, Jockey, Levi Strauss, Nike Inc. have also absorbed young talent from the institute to meet their specialized needs. Unbridled creativity of the fresh graduates has been noticed by leading designers like J.J. Valaya, Ritu Beri, Ashish Soni, Rajesh Pratap Singh, Manish Arora to name a few.





## BOARD OF GOVERNORS

Mr. Rajesh V. Shah  
Chairman, BOG-NIFT

Ms. Vandana Kohli  
Filmmaker, Musician and Writer

Ms. Kanimozhi  
Hon'ble M.P Rajya Sabha

Mr. Sunil Sethi  
Chairman, Fashion Design Council of India

Ms. Poonam Mahajan  
Hon'ble M.P Lok Sabha

Mr. Gaurang Shah  
Designer

Ms. V. Sathyabama  
Hon'ble M.P Lok Sabha

Ms. Anavila Misra  
Founder & Textile Designer

Mr. J. K Dadoo, IAS  
Additional Secretary &  
Financial Advisor, Ministry of Textiles

Mr. Sabyasachi Mukherjee  
Designer

Mr. Puneet Aggarwal, IAS  
Joint Secretary, Ministry of Textiles

Mr. Sanjay Lalbhai  
Chairman & Managing Director, Arvind Ltd.

Ms. Ishita Roy, IAS  
Joint Secretary, Ministry of Human Resource  
Development

Mr. P. K Gupta  
Chairman, Sharda Group of Institutions &  
Chancellor, Sharda University

Ms. Sarada Muraleedharan, IAS  
Director General, NIFT

## NIFT OFFICERS IN HEAD OFFICE

Ms. Sarada Muraleedharan, IAS  
Director General

Prof. Dr. Suhail Anwar  
Head (Projects)

Ms. Pramila Sharan, IRS  
Additional Director General

Prof. Dr. Shalini Sud  
Head (International & Domestic Linkage)

Ms. Sushma Singh, IRS  
Chief Vigilance Officer

Prof. Dr. Monika Gupta  
Head (CE & Diploma Programme)

Prof. Dr. Sharmila J. Dua  
Dean (Academics)

Prof. Dr. M.K. Gandhi  
Head - ERP

Mr. B. K. Pandey  
C.A.O/ Director F&A (I/c)

Mr. Vijay Kumar Dua  
Head (Academic Affairs)

Dr. Sanjeev Kumar  
Director (NRC & Information Technology)

Prof. Kavita Saluja  
Head (FOTD, FDP & Bridge)

Ms. Simesh Verma  
Registrar & Board Secretary

Prof. Dr. Raghuram Jayaraman  
Head (Industry & Alumni Affairs)

Mr. D. P. Solanki  
Joint Director & COE

Dr. Shinju Mahajan  
Head (Cluster)

Ms. Rajni Shah  
Asst. Board Secretary & Legal Officer

Dr. Archana Gandhi  
Head (Research)

Dr. Varsha Gupta  
Head (Corporate Communication Cell)

## NIFT OFFICERS & CHAIRPERSONS

Mr. Nitin Kulkarni  
Department of Design Space

Dr. Yathindra L  
Department of Fashion & Lifestyle Accessory

Prof. S. P. Jomichan  
Department of Fashion Technology

Dr. Ruby K. Sood  
Department of Textile Design

Mr. M. Annaji Sarma  
Department of Fashion Management Studies

Prof. Anupam Jain  
Department of Fashion Communication

Prof. Dr. Malini Divakala  
Department of Fashion Design

Ms. Sunitha Vasani  
Department of Knitwear Design

Ms. Savita Sheoran Rana  
Department of Foundation Programme

Mr. Rahul Sethi  
Department of Leather Design

## NIFT OFFICERS & CAMPUSES

Bengaluru  
Prof. V. Sivalingam  
Campus Director

Gandhinagar  
Mr. Arindam Das  
Campus Director

Mumbai  
Prof. Dr. Pavan Godiawala  
Campus Director (I/C)

Mr. M. Muthukumar  
Joint Director

Mr. N.B. Vaishnav  
Joint Director

Mr. Brijesh Madhukar  
Deore  
Joint Director

Bhopal  
Mr. U.S. Tolia  
Campus Director

Hyderabad  
Dr. N. J. Rajaram  
Campus Director

Patna  
Prof. Sanjay Shrivastava  
Campus Director

Prof. Sameer Sood  
Joint Director (I/C)

Jodhpur  
Dr. Vijaya Deshmukh  
Campus Director

Mr. N.S. Bora  
Joint Director

Bhubaneswar  
Prof. Sanjay Shrivastava  
Campus Director (I/C)

Kangra  
Prof. Bala Siddhartha  
Campus Director

Raebareli  
Dr. Bharat Sah  
Campus Director

Chennai  
Prof. Dr. Anitha Manohar  
Campus Director

Mr. D.K.Rangra  
Joint Director

Mr. Akhil Sahai  
Joint Director

Mr. B. Narasimhan  
Joint Director

Kannur  
Dr. N. Elangovan  
Campus Director

Shillong  
Prof. Monika Aggarwal  
Campus Director

New Delhi  
Prof. Dr. Vandana Narang  
Campus Director

Mr. G. Ramesh Babu  
Joint Director

Srinagar (J&K)  
Dr. Vijaya Deshmukh  
Campus Director (I/c)

Ms. Neenu Teckchandani  
Joint Director

Kolkata  
Col. Subroto Biswas  
Campus Director

Mr. Khushal Jangid  
Joint Director



## PROGRAMMES OFFERED

### Bachelor of Design (B.Des.) - 4 years

Accessory Design  
Fashion Communication  
Fashion Design  
Knitwear Design  
Leather Design  
Textile Design

**Eligibility:** 10+2 from a recognised Board of Education

### Bachelor of Fashion Technology (B.F.Tech) - 4 Years

Apparel Production

**Eligibility:** 10+2 (with Physics, Chemistry & Maths) from a recognised Board of Education

### Master of Design (M.Des.) - 2 years

Master of Design (M. Des) - **Eligibility**  
Bachelor Degree from any Institute/ University recognised by law in India or Undergraduate Diploma of minimum 3 years duration in UG Design from National Institute of Fashion Technology (NIFT) or National Institute of Design (NID)

Master of Design is an advanced course that demands an understanding of fundamentals in design and presupposes that candidates would be familiar with the basic skills and theories for successful completion of the programme.

NIFT programme would not provide any basic knowledge and skill development in design as a part of Master programme.

### Master of Fashion Management (M.F.M) - 2 years

Master of Fashion Management (M.F.M)

**Eligibility**  
Bachelor Degree from any Institute/ University recognised by law in India or Undergraduate Diploma of minimum 3 years duration from National Institute of Fashion Technology (NIFT) or National Institute of Design (NID)

### Master of Fashion Technology (M.F.Tech.) - 2 years

Master of Fashion Technology (M.F.Tech)

**Eligibility**  
Bachelor of Fashion Technology (B.F.Tech.) from National Institute of Fashion Technology (NIFT) or Bachelor of Engineering (B.E )/ Bachelor of Technology (B.Tech.) from any Institute / University recognized by law in India.

● The medium of instruction at NIFT is English and all aspirants applying to NIFT must possess working knowledge of English language.

● All aspirants applying to NIFT must possess basic computing knowledge and skill as applied to operating system, word processing, text editing, spread sheet, data base application, presentation as well as net surfing abilities.

For further details, refer to Admission Guidelines





# CAMPUS AND COURSE OPTIONS

## SEAT AVAILABILITY

2018		1	2	3	4	5	6	7	8	9		10	11	12	13	14	15	16		
PROGRAMMES		Bengaluru	Bhopal	Chennai	Gandhinagar	Hyderabad	Kannur	Kolkata	Mumbai	New Delhi		Patna	Raebareli	Shillong	Kangra	Jodhpur	Bhubaneswar	Srinagar	Total Seats	
<b>Bachelor Programmes - Bachelor of Design (B.Des) - Design</b>																				
1	Fashion Design (FD)	30		30	30	30	30	30	30	30		Fashion Design (FD)	30	30	30	30	30	30	30	450
2	Leather Design (LD)			30				30		30		Leather Design (LD)		30						120
3	Accessory Design (AD)	30	30	30	30	30		30	30	30		Accessory Design (AD)	30	30	30	30	30			420
4	Textile Design (TD)	30	30	30	30	30	30	30	30	30		Textile Design (TD)	30			30	30	30		390
5	Knitwear Design (KD)	30		30		30	30	30	30	30		Knitwear Design (KD)								210
6	Fashion Communication (FC)	30		30	30	30	30	30	30	30		Fashion Communication (FC)	30	30		30	30	30	30	420
<b>Bachelor Programme - Bachelor of Fashion Technology (B.F.Tech.) - Technology</b>																				
7	Apparel Production (AP)	30		30	30	30	30	30	30	30		Apparel Production (AP)	30			30	30	30		360
<b>Master Programmes</b>																				
8	Master of Design (M.Des.)	30					30		30	30		Master of Design (M.Des.)								120
9	Master of Fashion Management (M.F.M)	30	30	30	30	30	30	30	30	30		Master of Fashion Management (M.F.M)	30	30	30		30	30		420
10	Master of Fashion Technology (M.F.Tech.)	25		25	25					25		Master of Fashion Technology (M.F.Tech.)								100
Total		265	90	265	205	210	210	240	240	295			180	150	90	150	180	180	60	3010





## Foundation Programme

The Design & Technology studies at NIFT, commences with a two semester Foundation Program. The program is designed to foster the creativity, sensitivity and skills to form a strong foundation. The students are sensitized towards fundamentals of fashion business namely design, technology and management in a socio-cultural perspective. The program helps enrich conceptual creative thinking and create an awareness of the fashion business.

The program aims at encouraging students to explore their interest through a broad range of activities and courses. Students are offered a range of options for developing skills in specific area to develop their individual's strength through engagement with lectures, workshops, field visits and projects. Students can build their areas further through number of electives offered to them during their foundation period. The main objectives of the program are:

- To orient students towards multi-disciplinary nature of design.
- To provide an enhanced environment for creative thinking and integrated learning.
- To ensure a fundamental and common approach for the fashion industry in consonance with the needs of the industry.
- To provide uniform basic knowledge and skill competencies generic to Design and Technology disciplines.

The Design and Technology core encompasses a strong integrated skill and knowledge base essential to the fashion industry. An overview of apparel industry provides inputs on the socio-economic, traditional and cultural aspects of the industry, which would lead to ideation, conceptualization and communication. Exploration with various material and study of general and material science enhances basic understanding and appreciation of manufacturing processes leading to

product realization. The intricacies of design, through various courses for learning essential skills for development, progression and realization are included as part of the Foundation study.

To sensitize Foundation program students to our socio-cultural ethos, Craft Cluster Initiative has been included in the Foundation program. Craft being a sustainable way of life in the Indian context, students will observe the relationship between the artisans and their environment and the co-existence and co-creation of the two.

The Design aesthetics courses will address the essential socio-culture perceptions and contexts. Envisioning and inculcating ethical and aesthetic values lead to the understanding and expression of physical, psychological, professional and ergonomic concerns. The students will be given opportunity to develop their skills in the preferred areas.

**The students will have a choice to select the specialization after completion of Foundation program and the selection will be based on the performance during the first two semesters reflecting the student's aptitude.**





## Accessory Design

Accessory Design program is designed with a strategic philosophy of “Design for Business”. Accessories are personal objects, that relate functionally, conceptually and aesthetically to people and their environment. The education is imparted through exploring, processing and experimenting with thoughts, ideas & materials in order to establish a platform for new ideas and a powerful personal expression.

The objectives of the program are

- An in-depth study of the fashion accessory design process with appropriate theoretical knowledge and practical skills
- Understanding the broader cultural and social context of design
- Engage confidently, professionally and successfully within the fashion accessory industry
- Engage in various industry and cultural activities to further develop the understanding of the international fashion accessories landscape

The nature, practice and pedagogy of design education have undergone paradigm shifts in response to the challenges posed by the speed of change in convergence with technology. An overwhelming dominance of technology is witnessed in human life. Technology has not only revolutionized how people learn and work, but also changed their lifestyle, behaviour and way of thinking. The constant adaptation of courses through industry & academia feedback has shaped the program to evolve and address the current expectations of the market and future prospects of the students. The program addresses the transformative changes in the design education landscape. The curriculum has evolved by comprehending the emerging international and national practice of design learning. The academic interventions have deep rooted levels of social commitments through professional projects. Students are immersed in the traditional craft techniques as well as the use of smart digital tools. Alumni, Industry experts and domain specialists are actively involved with the

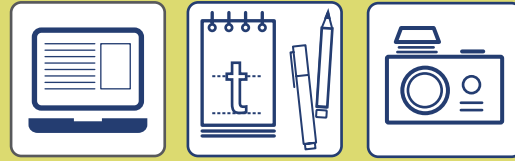
department.

The programs adopt a spectrum of knowledge transaction methods (pedagogy) like

- Faculty instructions (lectures and briefings)
- Projects (studio, live & collaborative)
- Project work with individual supervision
- Group work with supervision
- Field trips (traditional & contemporary)
- Self-study
- Presentations & reflections

The department collaborates with business to provide students with the opportunity to work under conditions and with issues that actually exist in the design professional world. Internship, a real time experience is an obligatory element of the programme.

The Fashion & Lifestyle Accessories Department has been creating professionals since 1992 and have graduates placed across the globe at leadership positions. Accessory Design graduates have been able to carve a niche for themselves in traditional as well as emerging sectors of global fashion industry space namely jewellery, body gears, home accessories, craft, furniture, footwear, bag, interiors, and in the realm of Designing experiences. Our graduates have also been able to tap the potential of the emerging markets such as User Interface and Experience design, smart wearable, Consumer interface design and product design especially addressing online market channels. Many Accessory Design graduates are successful entrepreneurs today.



## Fashion Communication

Amid the ever-growing world of fashion, Fashion Communication happens to be one of the newest, most exciting, and increasingly essential avenues to open up in the fashion and lifestyle industry.

The importance of brand identity has come to be seen at par with what the brand sells, i.e. the product. Uncountable prêt and luxury brands keep appearing in the Indian retail scenario, and it has become essential for each one of them to develop a unique brand identity for maximum impact and visibility. Fashion Communication has made it possible for these brands to communicate their products, identity, and strategy, by providing a platform for these very brands.

Fashion Communication professionals are well equipped with the requisite skill set to perform exactly what it takes to take a brand to new heights. In more ways than one, 'Fashion Communication' is the core of the whole business of Fashion.

This programme encompasses integrated course study relating with the areas such as visual merchandising, styling, graphic design, display/exhibit/space design, advertising and public relations, fashion journalism, creative writing, photography, interaction design and new media design, specific to the fashion and lifestyle industry.

Come graduation, the students are well versed with knowledge, concept base and skill. Fashion Communication students emerge as dynamic professionals qualified to offer the most effective and financially viable communication solutions for the fashion and lifestyle industry.

As new careers keep growing in the industry, there is infinite scope for the students of Fashion Communication to explore and expand their horizons. In the areas of Branding, styling, social media marketing, photography, space design, and graphics, Fashion Communication graduates are both versatile and passionate about more areas than just one.

The excellent faculty and staff feed their curiosity and interest, and assignments are created in order to challenge them to think some more. With some of the most prolific companies seeking such talented and disciplines students, Fashion Communication remains one of the most coveted departments in NIFT.





## Fashion Design

A flagship program of NIFT, the Fashion Design program has played an influential role in the growth of the Indian fashion industry. In the 3 decades of its existence the graduates of the department have made remarkable presence in the Indian as well as global fashion scenario. The four-year program in Fashion Design aims to produce dynamic design professionals who can face the challenges of the ever-changing fashion industry. It also equips them with strong creative and technical skills related to the field of fashion, which empower them to adapt to an evolving fashion biosphere. The curriculum incorporates combination of experiential learning and hands-on training that enables integrated development.

The department closely works with fashion professionals to create a sensational series of design professionals to evolve a unique fashion identity universally relevant and acceptable, for a global audience. Holistic inputs on generic design with focused approach towards apparel inculcates the ability to develop and channelize creativity. The curriculum hones design sensitization, which balances global fashion aesthetics with an Indian soul. It addresses the needs of the export market as well as both couture and pret-a-porter in India, expanding and categorizing apparel design into niche segment.

In tandem, with the industry requirements where design thinking plays a pivotal role the students are trained to anticipate and address relevant concerns and issues. A logical, sequential hands-on experience enables students to conceptualize design, make patterns, drape and construct garments of impeccable quality. A multidisciplinary approach focuses upon self-learning and independent thinking that expands perceptual perspectives that relate classroom teachings with practical learning.

The department of Fashion Design can well be termed the base at which the institution has built its laurels. Students gain valuable insight into the broad spectrum that Indian fashion encompasses through internships at leading fashion houses/ manufacturing units to improve knowledge and overcome the practical challenges faced. The course inculcates the traditional rural craftwork

by working with indigenous rural artisans via the cluster program that intern works towards the objective of design interventions. This homogeneity is evident in the final year through the graduating fashion collections, conceptualized and constructed by the students at the Design Collection showcase.



## Knitwear Design

The programme has been designed to create well-rounded professionals equipped to handle the challenges of circular and flat-bed knitting in the domestic and export fields. They can pursue careers as Designers, Creative Managers, Merchandisers, Production Managers and Entrepreneurs.

The four-year Knitwear Design programme is developed towards creating design professionals who can cater to Knitted Apparel- an exclusive segment in fashion. It aims to provide the student with creative thinking, strong technical skills and a dynamic market orientation.

Knitwear Professionals provide value addition to multiple areas for the fashion business; be it Apparel Designers, Fashion Forecasters, Fashion Stylists, Product Developers, Production Managers or Merchandisers. The curriculum likewise is multipronged, with a strong design direction. Students apply their classroom learning to industry-simulated environments, and undertake industry internship for both flat as well as circular knitting to hone their skills. Their design and technical knowledge culminates with a grand design collection at the end of the 8th semester.

Knitwear design students are exposed to a wide milieu of subjects including Fashion Art and Illustration, Garment Construction, Pattern Making for Knits, Flat and Circular Knitting, Computerized Flat Knitting, Trends and Forecasting, Design Process, Knitwear Production and Planning, Merchandising and Marketing.

In the initial semesters, the student is introduced to the world of knitted apparel through subjects like Basic Pattern Making, Flat knitting, Garment construction, Design application for fashion and History of world costumes. They move into core areas of knitwear with subjects like Digital fashion illustration, Circular knitting, Pattern making for knits (womenswear) and Garment construction for knits (womenswear). Traditional design acumen is honed with craft surveys, design and documentation at the end of the year.

In the later semesters, advanced techniques for knitwear design along with subjects like Digital Illustration, Draping, Print design and Computerized flat knitting become the focus.

Students also learn presentation skills with Portfolio development, and the intricacies of category wise planning for knitwear with Menswear, Sportswear and Fashion Merchandising. The students are also exposed to subjects like Retail buying, Retail space design, Product photography, Image and Fashion styling, Entrepreneurship and Lingerie design. The year culminates with an individual design collection or graduation project in industry showcasing the students' strength in conceptual thinking and translation into knitted apparel.





## Leather Design

The Leather Design graduates have opportunities in areas of Fashion business as Designers, Merchandisers, Range Developers, Buyers, Production Managers and Entrepreneurs. The Target industries include the Export and Domestic Manufacturing, Retail, Buying and Sourcing.

The Leather Design Program at NIFT is unique in its structure and application to the Fashion, Footwear and Accessories Industry while focusing on an integrative design perspective within the Industry requirements.

The Department was set up in 1993 at New Delhi as a Post Graduate Program: Leather Garments Design & Technology (LGDT) and initially focused on Leather Garments. Keeping in view the needs of the Industry and the nature of the department to evolve with changing times we have encompassed the areas of Fashion goods, Personal Lifestyle accessories and Footwear across our four Centers at Chennai, Kolkata, New Delhi and Raebareli.

The Vision of the Department is to be an integral part of the Apparel & Fashion Industry by means of material and product category opportunities: Outerwear, Personal & Lifestyle Accessories, Luxury products and Footwear in Leather and allied materials. To be leaders in preparing professionals who set the paradigm for possibilities in the Industry. To nurture these creative individuals and be the catalyst of growth to harness the potential of the resources available in our country.

Emphasis is laid on the integration of design concepts with material knowledge to respond to the requirements of specific target markets. A multidisciplinary approach and exposure to the industry through field trips, tannery training, Craft Cluster programs, Industry internship and Graduation Projects are an integral part of the curriculum. Industry and education interface takes place by identifying areas related to Design, Market, Material & Processes and opportunities for development whereby students explore and innovate with materials, Techniques, Forms and components.

The Leather Design graduates receive placements in areas of Fashion business

as Designers, Merchandisers, Product Developers, Production Managers and Entrepreneurs. The graduates' target industries include the Export and Domestic Manufacturing, Retail, Buying and Sourcing. The Alumni of the Department are trendsetters in their respective areas and have evolved the modern paradigm of the industry, making it an integrated part of the Global Fashion and Lifestyle arena.

The course is structured and focused to the human resource requirements of the Export and Domestic Industry and is aimed at developing a holistic professional. The specialization aims at nurturing social values while shaping the competitive and entrepreneurial spirit of the student. The multidisciplinary approach strengthens the spectrum of the various product categories being dealt with in the curriculum.





## Textile Design

From fibre to fabric, the design and development of textiles is the key to the business of fashion. The fast paced activities in the export and domestic sectors of the Indian apparel and home fashion industry demand professional textile designers who can think 'out-of-the-box' and yet adapt to the challenging business environment.

The Textile Design programme equips students with knowledge and hones their creativity and understanding of design application for apparel and home fashion industries. Woven, print design, embroidery and surface embellishment are the core textile subjects and together impart an extensive and versatile training for the students. The programme builds upon the integration of creative forces of design with textile technology, and also keeps in mind the historical, social and cultural contexts in which the designers work today. The structure integrates interdisciplinary learning to augment the skillset of the students and impart a holistic perspective to learning, thereby enabling access to a wide range of career paths and options.

The Textile Design curriculum offers ample opportunity to students to create, experiment and innovate with materials. Alongside there is also emphasis on learning specialized software in order to explore digital and non-traditional approach to design, fabric structures and surfaces. The objective is to provide hands-on experience through practical set-ups and state-of-the-art technology. The department boasts of an array of labs including weaving, textile testing, surface design and CAD.

The Textile Design department at NIFT has distinguished itself through its unique and innovative approach to design education, and through its proximity to the Indian fashion and textiles industry. The programme structure is planned to build in a sound textiles foundation with a robust industry orientation by way of market surveys, industry visits, internship and graduation project. The students also

get exposure to a craft environment by way of craft cluster initiative, which sensitizes them to traditional practices.

The Textile Design students undertake sponsored Graduation Project in their final year with the industry for a period of 16 weeks to develop design collections. The projects are sponsored by textile mills, export houses, home and apparel retail brands, designers or NGOs. The students are also given choice to undertake self-sponsored or research projects. The Graduation Project culminates with academic evaluation and final showcase of students' work in an annual show.

The programme prepares students for a wide range of careers in the textile and fashion industry like mills, export houses, buying agencies, design studios, handloom and handicraft cooperatives, NGOs, home and apparel retail brands and online stores as Designers, Merchandisers, Buyers, Managers, Home/Fashion Stylists and Trend Forecasters or work independently as Entrepreneurs. The Textile Design alumni are doing collaborative and interdisciplinary work with world-leading industry partners such as Arvind Mills, Welspun, Bombay Dyeing, Madura Garments, Maspar, Portico, D'décor, Trident Group, Samsung, W for Woman, Biba, Satya Paul, Triburg, Sarita Handa Exports, Shades of India, Apartment 9, Blackberrys, Fabindia, Jaypore and with designers like Sabyasachi Mukherjee, Ritu Kumar, Tarun Tahiliani, among others. Some of the alumni are successful entrepreneurs, setting trends and making great strides in the fashion world.





## Fashion Technology (Apparel Production)

The Programme takes a rigorous scientific approach towards knowledge dissemination required to create well rounded industry ready professionals. The B.F.Tech (Apparel Production) graduates will cater to the multitude of demands placed on their shoulders by the apparel manufacturing industry. Due to the varied job profiles undertaken by the students, it has become imperative for the course to be flexible and innovative in its content offerings. Keeping the diverse nature of challenges faced by the industry, the course curriculum aims to introduce different essential streams including apparel manufacturing technology, information technology, quality management, etc.

The course introduces students at first to the fundamentals governing the aesthetic and design elements required for a fashion technology graduate along with the fundamentals of management aimed at sufficient skill levels required in the apparel manufacturing industry. Exposure in the information technology domain is also provided from the viewpoint of developing information systems as well as using information technology enabled tools meant for managerial excellence and decision-making.

In the technology realm the students are exposed to the basics of human body and how to develop patterns in 2D and to convert the raw material into 3D apparels. The course imparts extensive knowledge of raw materials including fabrics and trims in the formative years to enable the students to relate their understanding with apparel manufacturing. Extensive knowledge regarding machineries involved in the manufacturing of apparels is provided.

Further along the years, the students develop understanding of high level critical subjects including production planning, merchandising, work study and quality control which provide essential operational knowledge relating to future work profiles. Also the course allows the students to pursue varied interests by way of electives, which are offered in allied fields enabling wider exposure to kindle their interests alongside the regular inputs. Students undertake various internships mandated

by the curriculum during the programme to strengthen their understandings derived from classroom teaching.

The students are also oriented towards conducting meaningful research during the final year. The culmination of the programme leads the student researching, experimenting and implementing the skills by way of a graduation project. The projects are generally aimed at solving of real world problems related to apparel design and development, manufacturing and allied areas. At the end of 8 semesters the course moulds the students to be qualified to position themselves for diverse work profiles available in the apparel-manufacturing sector.



## Master of Design (M.Des.)

The nature of fashion has evolved beyond its association with apparel, to become multi-disciplinary and multi-dimensional. Its approach to various concepts, material, technology, craftsmanship, culture, business, economics, promotion, consumption and innovation; has progressed towards creating unexplored areas that present immense scope for study and research.

of Business, Fashion and Society using a design-guided approach.

(The above mandate is based on the assumption that the students applying for Master of Design Programme would be familiar with fundamentals of design.)

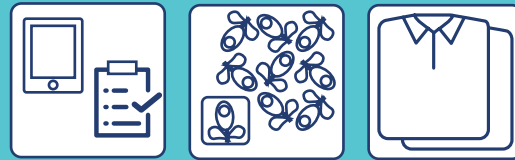
'Master of Design' degree caters to this multi-disciplinary and dynamic nature of job profiles that seek professionals who can work in versatile environments. Research is one of the tools that empower one to take up challenges, which may emerge in contemporary complex systems. Therefore, this course builds its specializations based on the foundation of design thinking and research practice.

Students are provided with options for forming their own Career Pathways to create new avenues from varied areas of interest. The unique aptitude and ability of each student is recognized and honed through specialized training and skill development during the course of two years.

Graduates of this programme would be equipped to hold key positions in large fashion, design or corporate houses in the areas of Craft, Textiles, Special Needs, Publications, Media, Lifestyle Products, Graphics and User Experience Design depending on the area of specialization pursued by each student through a pedagogic structure that enables individual pathways which lead to design industry domains. The graduates would be able to contribute in Research and Development in government and private agencies while would enable those interested to make scholarly contribution in academia as well.

Invested through the tool of critical thinking skills applied to society and system imparts a wider perspective and understanding to the changing cultural context of our country. Students from different disciplines provide multi-dimensional and innovative thought construct for providing critical and creative solutions to future problems. The research environment in the programme builds a platform for addressing multi-fold needs





## Master of Fashion Management

The objective of the two year Master of Fashion Management (MFM) Programme (erstwhile AMM), started in 1987, is to develop leadership and managerial talents in the fields of management, marketing, merchandising and retailing, best suited to the requirements of the garment export, fashion and lifestyle and retail sectors. Students undergo in depth education in management, marketing, buying, merchandising (retail and export), retail operations, forecasting, international marketing, international trade practices and project formulation.

They are exposed to creative merchandising/marketing, innovative fashion management practices, Information technology developments, directions of fashion trends and business practices through field visits and industry internships. Research, data analysis and decision-making skills are inculcated as part of curriculum. They have the right blend of hard and soft skills and possess the right attitude to enter the junior, middle management levels of any growing organization.

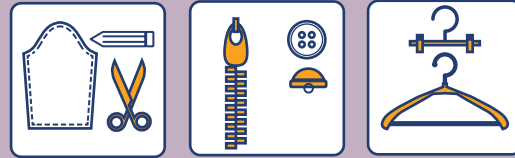
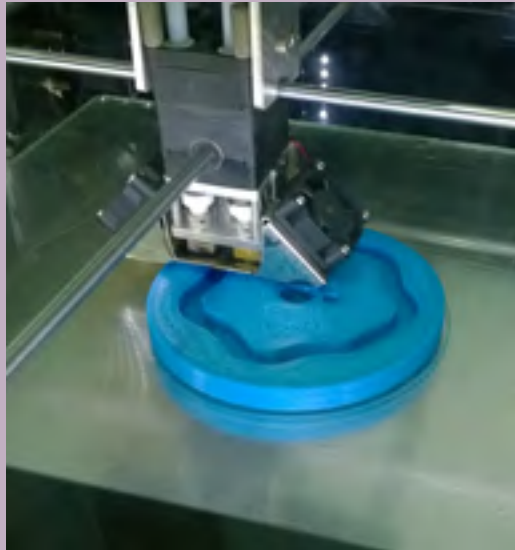
The programme offers a solid platform for those wishing to pursue careers in Fashion Marketing, Fashion Merchandising, Retail & Mall Management, Brand Management, Retail Buying, Global Sourcing, Product Development, Visual Merchandising, Export Merchandising, Management Consulting, Fashion Education, Retail Technology, Supply Chain, Customer Relationship, Digital Marketing etc. in the sectors of apparel, lifestyle, accessories (watches, footwear, eyewear, jewelry), home furnishings and wellness. The students are also exposed and associated with craft clusters because of which they become better marketers of both handloom and handicraft products.

The programme introduces concepts and principles of Fashion Marketing, Retailing, Merchandising, Management, Fashion product related knowledge and Soft Skills. The curriculum is relevant and

updated through regular interaction with the stakeholders. Latest innovations in the programme have been in the areas of Mall Management, E-Business and Store Operations. The students are exposed to the dynamics of an organization through an eight-week fashion industry internship and training programme. This enables the students to integrate classroom learning with practical experience. Outbound Programme, Leadership development, Craft cluster initiative and extra-curricular activities brings all round development in the student.

As the programme progresses the emphasis is on application of knowledge and skills. Relevant new areas of study like Intellectual Property Rights, Social Media Marketing, Luxury Management, Services Marketing, e-commerce and the study of Special Product Groups provide the young minds with an opportunity to further explore their areas of interest. Departmental electives offered allow students to select areas of specialization according to their individual interests. Entrepreneurship is inculcated both as part of curriculum and through various projects. As part of the curriculum, the students carry out the sectoral studies and involve themselves in rural products / crafts, social responsibility projects. They undertake company sponsored graduation research project with an organization of their choice to integrate the learning of previous semesters to solve problems.

Over the last three decades the department and its alumni have shared a rich relationship with the industry, with most of the largest Fashion companies and brands recruiting students and some also being headed by our alumni.



## Master of Fashion Technology

The programme adopts a holistic approach towards cultivating postgraduate students meant for techno managerial roles in the fashion and allied manufacturing sector. In the initial courses the students from various engineering disciplines are oriented towards the apparel manufacturing industry as they learn various operations and processes involved. Concurrently the programme imparts managerial concepts related to operations. The curriculum introduces the students to the global scenario prevailing and its path taken through the years to gain an understanding of apparel manufacturing trade.

Technology subjects relating to the engineering of patterns using manual method and computer-aided design and construction of garments allow the students to understand product specifics. Knowledge of various machineries involved ranging from the basic mechanisms to new age automated machineries ensure the students are aware of technical issues which arise due to product complexities. This enables identifying accessible solutions and development of related indigenous solutions. Extensive inputs are given in areas of Plant layout, Industrial engineering, Maintenance engineering related to manufacturing of fashion goods.

Exposure to managerial decision making whilst understanding and analyzing of information using statistical tools are also taught. Skills relating to usage of new age software tools pertaining to managing information and data that enable the students to delve into researching of relevant areas are enriched in the later part of the programme. The classroom teaching is reinforced with regular field visits to industries present in the fashion supply chain. The students also get a chance to experience and relate their classroom learning while undertaking internship with relevant industry.

Extensive inputs relating to technical and managerial problem solving techniques are given to fulfil the demands of roles experienced by the managerial candidates in the industry. Production and demand planning skills, technology and data management skills are honed during

the programme. Additionally inputs of entrepreneurship and developing of business plans are provided to encourage willing students to explore the glorious path of being an entrepreneur. The programme requires the student to undertake a thesis in the field of their choice to research and derive solutions by way of collaborating with domestic and international companies utilizing classroom learning.



# ADMISSION GUIDELINES 2018

Admission Calendar- 2018	
Online Registration	20th October, 2017
Last date for Online Registration	29th December, 2017
Last date for online registration with late fee of Rs.5000/- (in addition to the applicable application fee) through Credit/Debit Card only. In case of Demand Draft, the print out of the application alongwith DD should reach the given address before 02nd January, 2018	02nd January, 2018
Window to edit / update the Application Form	From 30th December, 2017 Saturday (12:00 hrs) till 2nd January, 2018 Tuesday (16:00 hrs)
Admit Card (Online only)	9th January, 2018
Written Entrance Examination for all UG & PG Programmes	21st January, 2018
Result of Written Entrance Examination	February/March, 2018
Situation Test / Group Discussion / Interview	April - May, 2018
Declaration of Final Result (Online)	End of May / June, 2018
Counselling	End of May / June 2018 Onwards
Note: Admit Cards, Results and Counselling Schedule will be available on NIFT's website only. No separate communication will be sent by post.	

## WHO CAN APPLY?

### For Bachelor Programmes :

Maximum Age: 23 years as on 1st October, 2017. The upper age limit may be relaxed by a period of 5 (five) years for the candidates of Scheduled Castes/Scheduled Tribe/Person With Disability (PWD) subject to following qualifications:

### Eligibility for Bachelor Programmes – Bachelor of Design – B.Des.

(Fashion Design / Leather Design / Accessory Design / Textile Design / Knitwear Design / Fashion Communication)

· The +2 level examination in the 10+2 pattern of examination of any recognized Central/State Board of Secondary

Examination, such as Central Board of Secondary Education / State Board New Delhi, and Council for Indian School of Certificate Examination, New Delhi.

or  
· General Certificate Education (GCE) Examination (London/Cambridge/Sri-Lanka) at the Advanced (A) level/ International Baccalaureate (IB).

or  
· Any Public School/Board/University Examination in India or in foreign countries recognized by the Association of Indian Universities as equivalent to 10+2 system.

or  
· A pass grade in the Senior Secondary School Examination conducted by the National Open School with a minimum of five subjects.

or  
· 3 or 4-years diploma recognized by AICTE or a State Board of Technical Education.

## Eligibility for Bachelor Programme – Technology

### Bachelor of Fashion Technology (Apparel Production) (B.FTech.)

· The +2 level examination in the 10+2 pattern of examination of any recognized Central/State Board of Secondary Examination, such as Central Board of Secondary Education, New Delhi, and Council for Indian School of Certificate Examination, New Delhi with Physics, Chemistry and Mathematics.

or

· General Certificate Education (GCE) Examination (London/Cambridge/Sri-Lanka) at the advanced (A) level with Physics, Chemistry and Mathematics / International Baccalaureate (IB).

or

· Any Public School/Board/University Examination in India or in foreign countries recognized by the Association of Indian Universities as equivalent to 10+2 system with Physics, Chemistry and Mathematics.

or

· A pass grade in the Senior Secondary School Examination conducted by the National Open School with a minimum of five subjects with Physics, Chemistry and Mathematics.

or

· 3 or 4-years diploma in any branch of Engineering recognized by AICTE or a State Board of Technical Education

### For Master Programmes :

Age - No age limit

## Eligibility for Master Programme – Design

### M.Des (Master of Design)

· Undergraduate Degree in any discipline from any Institute / University recognized by law in India

or

· Undergraduate Diploma of minimum three years duration from NIFT / NID.

**Note:** Master of Design (M.Des.) is an advanced course that demands an understanding of fundamentals in design

and presupposes that candidates would be familiar with the basic skills and theories for successful completion of the programme. The course would not provide any basic knowledge and skill development in design as a part of its Master programme.

## Eligibility for Master Programme – Management

### Master of Fashion Management (M.F.M.)

· Undergraduate Degree in any discipline from any Institute / University recognized by law in India.

or

· Undergraduate Diploma of minimum three years duration from NIFT / NID.

## Eligibility for Master Programme – Technology

M.F.Tech. (Master of Fashion Technology)

· B.F.Tech. from NIFT

or

· B.E / B.Tech. from any Institute / University recognized by law in India.

## IMPORTANT NOTE

1. Candidates appearing in the qualifying examination are also eligible to apply provided:

(a) That they produce a proof of having acquired the minimum prescribed qualifications at the time of counselling/admission.

or

(b) If the 12th class/final year/final semester (as the case may be) result of qualifying degree/certificate examination is not declared by the concerned Board/University till the date of counselling/admission, his/her admission in such case will be strictly provisional subject to the following conditions:

(i) Affidavit on non-judicial stamp paper of Rs.10/- in the prescribed Proforma (Annexure-I) is submitted. In case the candidate is minor i.e. below 18 years of age, the affidavit shall be signed by his/her parent/guardian. Candidates/ parent/guardians may note that submission of false affidavit is a punishable offence;

(ii) The candidate will submit the final result of qualifying degree/certificate providing his/her eligibility on or before 30th September, 2018 to their Campus Director / Jt. Director where the admission has been granted.

(iii) In case the candidate fails to submit his/her final result of qualifying degree in the manner as prescribed at (ii) above to prove his/her eligibility on or before 30th September, 2018, whatsoever the reason may be his/her admission will be treated as null and void (cancelled) and entire fee will be forfeited. Any exception will be as per the decision of DG-NIFT, on a case to case basis.

(iv) The Campus Director / Nodal officer will be responsible to ensure that the eligibility of all students meet prescribed qualification for admission specially in case of provisional admission. The provisional admission will automatically stand cancelled, if the candidate fails to submit result in time i.e. 30th September, 2018.

(v) Those candidates who are seeking provisional admission due to nondeclaration of their final year/final semester/12th class (refer Annexure -I) will provide proof of having passed all papers in all the previous years /semesters of qualifying degree examination (whichever relevant).

(vi) The candidates will also bring the date sheet /admit card/ Principal's certificate as proof of having appeared in the qualifying exam.

(vii) Candidates who have appeared for Supplementary examination(s) in the final semester/ final year of graduation and the result of the same is not declared by the time of counselling/ admission, such candidates will be considered for admission as per para 1 (b) (ii) above, for the academic session 2018-19.

(viii) Candidates who have appeared for compartment examination(s) in the 12th standard, such candidates will be considered only for provisional admission. However, he / she will have to clear the compartment examination UNDER THE SAME BOARD, failing which the provisional admission will stand automatically cancelled and entire fee will be forfeited.

2. Any candidate who has not appeared for the qualifying exam before the date of counselling/ admission to NIFT, will not be eligible.

3. It is further clarified that provisional

admission will be considered only in such cases where the result of Final year/ semester of the qualifying degree has not been declared by the concerned Board/ University in its totality. In case the result has been declared by the concerned Board/ University but it has not been declared in a specific case, for any reason, such cases will NOT be considered under provisional admission category.

### RESERVATION OF SEATS

The seats reserved for SC / ST / Person With Disability (PWD)/ Foreign Nationals / SAARC / NRI/ State Domicile in each programme are as under:

SC	15%
ST	7.5%
OBC (NON-CREAMY)	27%
Person With Disability (PWD)	5% Horizontal reservation for Person With Disability (PWD)(with 40% or more disability) cutting across all sections i.e. SCs, STs, OBCs Non-Creamy and General category. Campus and programme will be allotted on rotation, at NIFT's discretion
Foreign Nationals/ SAARC/NRI	15% (supernumerary)
State Domicile	20% (supernumerary)

The qualifying candidates need to meet the eligibility and admission requirements of NIFT.

### REQUIREMENTS OF EACH CATEGORY ARE AS FOLLOWS:

#### SC/ST Candidates

Candidates applying under this reserved quota will have to produce a Caste/Tribe certificate from the Competent Authorities of the respective States/Union Territories/ National Commission of Tribes.

#### OBC (Non-Creamy) Candidates

Candidates applying under this quota would have to substantiate the caste and non-creamy layer requirement. Candidates applying under this quota shall produce a caste certificate from the Competent

Authority certifying that they belong to the non-creamy layer. The certificate should be in favour of the candidate, issued not earlier than September 01, 2017. Failure to produce an appropriate certificate from a competent authority shall make the candidate ineligible for counselling, and the applicants will not be offered admission. Requests for provisional admission will not be entertained.

#### To summarize:

a) The candidate should possess an OBC (Non-Creamy) certificate issued in the name of the candidate and not in favour of respective parents/guardian.

b) The caste mentioned in the OBC (Non-Creamy) certificate should find mention in the Central list of OBCs available at <http://ncbc.nic.in/backward-classes/index.html>

c) The OBC(Non-Creamy) certificate should clearly mention that the candidate belongs to the non-creamy layer.

d) The certificate must be issued by the Competent Authority.

e) In case of married women applying to any course under reserved category, she has to produce the caste certificate in her own name. Certificate in the name of husband / mother/ father is not acceptable.

#### Person with Disability (PWD)

Candidates applying under this category should have Certificate of Disability issued as per sub-section (2)(a) of section 58 of The Rights of Persons with Disabilities Act, 2016(49 of 2016) in Form V, Form VI or Form VII as per rule 18(1) of the notification vide number G.S.R. 591(E) dated 15th June, 2017.

The certificate should be issued by a medical authority designated under sub-section (1) of section 57 of the act and rules 17 (a) and (b) of G.S.R. 591(E).

Such candidates are required to produce the original Certificate of Disability both at the time of Counselling and at the time for Admission to the Institute.

It is mandatory for the Person with Disability to attend the Counselling for evaluation. The course will be allotted to the candidates after assessing the capabilities of the candidates. NIFT may consider applications from PWD students for providing external assistance during assessments, with the condition that the expenses for the same will be borne fully by the student/ applicant.

It is however recommended that the student/ applicant arrange his/her own external assistant for this purpose as this will ensure a better fit for individual needs. NIFT will assess the actual physical/ psychological capability of a candidate selected for counselling of a particular programme/ course as per the specific requirements of that particular Programme/ course by a Board constituted at each campus by the Campus Director.

The three members Board will consist of a Medical Officer/Psychologist, a Faculty from the concerned department (Design/ Technology/Management) and an Administrative Officer.

Candidates are advised to come prepared for such assessments at the time of counseling. NIFT may utilize its laboratories/equipment/ test materials for making such assessment of the physical/psychological capability of a candidate for undertaking that Programme/ course and may tailor such test for each individual separately as decided by the Board.

The assessment is compulsory for all candidates seeking reservation under this category.

The Board in its proceedings will recommend whether the candidate is capable or incapable for undertaking the particular programme/course applied for.

A copy of such order will also be communicated to the candidate in writing under acknowledgement informing him that he can make an appeal against the order, in which case the appeal will be referred to the Standing Board at Head Office (HO) whose recommendation will be final and no further representation will be accepted.

NIFT reserves the right to disqualify the candidature in case of inability of the candidate for a particular programme.



The table below indicates the type of assessment that may be conducted by a Board of NIFT for various categories of disability and programmes to find if the Student is able to access mainstream curriculum:

Program	Criteria / Method	Suitability				
		Design	Drawing/ Sketching/ making models/ Colour sense	Visual Clarity	Minor speech disability	Minor Hearing disability
	Operating Machines/ Computer Keyboard manually/mobility					
General requirements: Adequate cognitive functions to access mainstream curriculum; no intellectual impairments. Adaptive functioning showing mild deficit, in academic and/or communication skills but able to meet the requirements of curriculum and learning environment using assistive devices independently. Good social interaction skills and emotional stability to be adaptive with large group learning setting and do not have a challenging behavior that disturbs the education of other students.						
Program	Criteria /Method	Suitability				
Technology	Operating Machines manually / Computer Keyboard manually/mobility	Minor Visual Clarity	Minor speech disability	Minor Hearing disability	No major locomotor disability in hands, legs, face & neck	
Fashion Management	Operating Computer Keyboard manually/					
General requirements: Adequate cognitive functions to access mainstream curriculum; no intellectual impairments. Adaptive functioning showing mild deficit, in academic and/or communication skills but able to meet the requirements of curriculum and learning environment using assistive devices independently. Good social interaction skills and emotional stability to be adaptive with large group learning setting and do not have a challenging behavior that disturbs the education of other students.						

### Window to edit/ update Application Form

Prior to making the payment candidate can edit / amend the information in the online application. Once the payment has been made by the candidate he/she will not be allowed to change / modify any information by the system. However, applicants will be given an opportunity to review and correct their personal information (changing the City of Examination is not permitted) in the application form from 30th December 2017 1200 hrs till 02nd January 2018 1600 hrs.

- Application fee already paid will not be refunded in case the application is found not eligible for admissions to NIFT after editing / updating of the application form.

- It is the sole responsibility of the applicant to provide correct information during the application process. At any stage if it is

found that the information provided by the candidate is not true, NIFT has the right to cancel his/her candidature. Any direct or indirect attempt to influence the management and employees of the institute will lead to automatic disqualification of the candidate.

After closing the window to edit the application form / registration category filled up in the application form will not be changed at any stage. Therefore, candidates / guardians are advised to fill-up the application form with due diligence.

### Foreign Nationals / SAARC / NRI

Fifteen percent (15%) of total seats i.e. 5 seats in each programme at Delhi, Mumbai, Kolkata, Bengaluru, Chennai, Hyderabad, Gandhinagar, Raebareli and Srinagar are reserved for admission of Foreign Nationals (whether residing in India or abroad) and

Non Resident Indian, who are citizens of India holding an Indian passport and have temporarily immigrated to another country for six months or more for work, residence or any other purpose. The admission to NIFT programmes for foreign nationals / NRI candidates will be based on the following examinations:

Bachelor Programme (B.Des & B.FTech)	SAT Score
Master Programme (MFM)	GMAT Score
Master Programme (M.Des & M.FTech)	GRE Score

Campus / Programme will be allotted on the basis of merit list drawn as per the scores obtained by the candidates. Candidate may appear in as many as SAT /GMAT/GRE examination prior to 30th April 2018. The highest score among the test will be taken into consideration for allotment of seat.

### PROCEDURE FOR APPLYING UNDER FOREIGN NATIONALS/SAARC/ NRI CATEGORY:

Those seeking admission under this category have to apply online at website [www.nift.ac.in](http://www.nift.ac.in) or <https://applyadmission.net/NIFTNRI2018>. The last date for applying under this category is 30th April 2018.

Candidates applying for Bachelor Programmes of NIFT should arrange to send SAT scores directly from College Board, USA, to NIFT H.O. New Delhi. SAT scores have to be submitted through College Board to NIFT before 30th April, 2018. The Designated Institution (DI) Code is 7258.

The Campus and Programme will be allotted to the candidates based on SAT/GMAT/GRE score as well as the preference of the candidate.

Candidates at the time of registration for SAT should indicate DI code: 7258 for sending their scores to NIFT Head Office, New Delhi.

Candidates applying for Master Programmes i.e. Master of Fashion Management (MFM), should arrange to send GMAT test scores while those applying for Master of Design (M.Des.) and Master of Fashion Technology (M.FTech.) should arrange to send GRE test scores directly to NIFT H.O. Delhi. The GRE/ GMAT/SAT scores should not have been declared before 1st January, 2016 and should be received by the Institute latest

by 30th April, 2018. The candidates must designate NIFT Programmes as choice in the GRE/GMAT/SAT. Candidates seeking admission under this category should apply in the prescribed Application Form online.

**Academic Eligibility:** All candidates must satisfy the required academic qualifications. In case Degree/certificate has been obtained from some University /Board of any other country then an equivalence certificate must be obtained from Association of Indian Universities (AIU) New Delhi (website: [www.aiuweb.org](http://www.aiuweb.org)) prior to admission.

The medium of instruction in NIFT is English and all aspirants applying to NIFT must possess working knowledge of English language.

### Fee Payment:

The candidates who fulfill the admission criteria specified above may apply online with requisite application fee of US\$100 through the Online NIFT Payment gateway.

Once selected under this category, candidates shall pay the fee at the time of admission for the first academic year consisting of two semesters. They would also need to obtain a valid residential permit or student visa for the prescribed duration of the programme.

### CHILDREN AND WARDS OF NRI

Any NRI seat remaining vacant will lapse and not be converted to any other category. However, the remaining seats will be offered to the children /wards of NRI as per merit during counselling. NIFT may re-allot seats among the programmes to meet the demand of the candidates, within the overall limit as prescribed for this category.

All the candidates having Common Merit Rank (CMR) and falling under the category "Children/Wards of NRI" will be given an opportunity to opt for NRI seat subject to fulfilling the criteria, submission of necessary documents and fee during regular counselling.

### Special NRI Test

If however, NRI seats remain vacant, these seats will be offered again for admission through a special NRI test.

Candidates who could not be shortlisted for Situation Test/GD & PI, as well as, fresh/new

aspirants would be eligible for admission, subject to fulfilling necessary academic and documentary requirements. The Special NRI Test / Interview will be conducted at New Delhi. Registration for all the candidates would be mandatory. The candidates who fail to be shortlisted for Situation Test and GD & PI will appear only for the Interview.

New candidates have to appear for both Written Entrance Examination and Interview. While drawing up the merit list the candidates who appeared only in the interview will be assigned top position and the new candidates would be placed thereafter. Based on these parameters, a final consolidated merit list would be declared. Seats shall be allotted strictly according to merit. The candidates selected under Children / Ward of NRI shall pay the fee prescribed for NRI Candidates.

**Hostel Accommodation and Other Expenses:** Hostel fee and other expenses, indicated in Admission Prospectus may vary from one NIFT Campus to another. The hostel fee is required to be paid by the candidate directly to the Campus at the time of admission/joining. Candidates are advised to visit the website or contact the concerned authorities of the NIFT Campuses for detailed information regarding hostel accommodation and related expenses.

### State Domicile Preferential Seats

Twenty percent (20%), i.e 06 supernumerary seats in addition to 30 seats will be offered for admission as State Domicile Preferential Seats to candidates who belong to the States where the following NIFT campuses are located:

S.No.	NIFT Campus	State
1	Patna	Bihar
2	Kangra	Himachal Pradesh
3	Kannur	Kerala
4	Bhopal	Madhya Pradesh
5	Shillong	Meghalaya
6	Bhubaneswar	Odisha
7	Jodhpur	Rajasthan
8	Srinagar*	Jammu & Kashmir*

\*Thirty Five percent (35%), seats within 30 seats will be offered for admission as State Domicile Preferential Seats to the domicile candidates of Jammu and Kashmir (J&K).

The state in which the candidate has completed his/her class 12th examination/ graduation/qualifying degree is the domicile of the candidate. A certificate from the school /college may be obtained. In case the candidate obtained the qualifying certificate/ degree through Distance Learning mode, the address of the school attended by the candidate regularly will determine his/her domicile status.

Candidates who are domicile of the states where the NIFT Campuses exist will be allowed to opt for these preferential seats while filling online application form. However, they will have a choice to take admission under General / ST/ SC / OBC category (as applicable) as per merit to any course/campus of their choice.

Reservation of SCs / STs/ OBCs (non creamy layer) candidates, shall be applicable for the domicile seats also.

### HOW TO APPLY : SUBMISSION OF APPLICATION FORM

Candidates can apply online at [www.nift.ac.in](http://www.nift.ac.in) or <https://admission.net/nift2018>.

Guidelines for applying online may be referred for the purpose. The prospectus is available at NIFT website [www.nift.ac.in](http://www.nift.ac.in) free of cost. The application fee has to be paid through online payment gateway or through Bank Demand Draft issued in favour of "NIFT HO" payable at New Delhi.

- Non-Refundable Fee for General/OBC (Non-Creamy) Category: Rs.1500/- through payment gateway or Demand Draft.
- Non-Refundable Fee for SC/ ST/ PWD Category : Rs.750/- through payment gateway or Demand Draft.

### Mode of Payment: Credit Cards/ Debit Cards and Demand Draft

#### (A) Credit Cards /Debit Cards

Payments of application fee (Rs.1500/- or Rs.750/-) can be made through credit cards / debit cards as explained above. The bank and / or transaction charges on the application fee will be borne by the candidate.

**Candidates are advised to apply on time.**

#### (B) Demand Draft

Payment of application fee (Rs 1500/-in case of GEN/OBC (Non-Creamy) candidates and Rs 750/- in case of SC/ST/PWD- candidates)

can be made through Bank Demand Draft as explained above. The Demand Draft should be issued in favour of "NIFT HO", payable at New Delhi. The details of the Demand Draft are to be filled in the online application form.

Candidates are advised to check the following details carefully before sending the Demand Draft

- DD made in favour of "NIFT HO",
- Amount of Demand Draft as applicable i.e. Rs 1500/- in case of GEN/OBC (Non-Creamy) candidates and Rs.750/- in case of SC/ST/ PWD candidates
- Name, Date, Amount & Signature of the issuing authority on the Demand Draft.

Candidates applying through Demand Draft are required to send the printout of the Application Form, duly completed in all respects, along with Demand Draft on the following address:

**Project Manager  
All India Management Association  
Management House,  
14, Institutional Area,  
Lodhi Road, New Delhi - 110003**

The duly filled form should reach the above address on time. Incomplete forms or forms received late will not be accepted. The Institute does not take any responsibility for delay or loss of forms or correspondence in postal transit or by courier. Candidates are advised to keep the copy of printout and Demand Draft for future reference.

**Candidates are advised to keep a print out / photocopy of Application Form for further reference along with proof of payment.**

### LIST OF EXAMINATION CITIES

A Paper Based Test (PBT) for all UG and PG Programmes will be conducted on 21st January, 2018 at 32 cities.

The candidate may select only ONE city for the examination on 21st January, 2018. No request for change in examination center will be entertained at any stage.

### LIST OF EXAMINATION CENTRES

S.No.	CITY
1	Ahmedabad
2	Bengaluru

3	Bhopal
4	Bhubaneswar
5	Chandigarh
6	Chennai
7	Cochin
8	Coimbatore
9	Dehradun
10	Delhi
11	Guwahati
12	Hyderabad
13	Jaipur
14	Jammu
15	Jodhpur
16	Kangra
17	Kannur (Kerala)
18	Kolkata
19	Lucknow
20	Madurai
21	Mumbai
22	Nagpur
23	Patna
24	Pune
25	Raipur
26	Ranchi
27	Surat
28	Udaipur
29	Vadodara
30	Vishakhapatnam
31	Shillong
32	Srinagar (J&K)

Please note that NIFT reserves the right to cancel any of the Examination Centres mentioned above. In such a case, an alternate centre, which is locationally and administratively convenient, will be allotted. Candidates may e-mail:

[nift@applyadmission.net](mailto:nift@applyadmission.net)  
or  
[admissions@nift.ac.in](mailto:admissions@nift.ac.in)

for related queries.

### ADMIT CARDS

On the basis of information given in the NIFT Application Forms, Admit Cards of provisionally eligible candidates will be available for download from [www.nift.ac.in](http://www.nift.ac.in) or <https://admission.net/nift2018> from 9th January, 2018 onwards. Admit cards will not be sent by post. Candidates are advised to regularly check NIFT website for updates.



## ENTRANCE EXAMINATION

Based on the choice, all eligible candidates will have to appear for a written entrance examination at the Examination Centres opted by them. The written entrance examination is designed to test the knowledge, skill and aptitude of the candidates for the programme opted.

Entry to the Examination Centre will be allowed with admit cards only. Mobiles and other infotech gadgets are not allowed inside the Examination Centre. Candidates found with mobile or other infotech gadgets will be asked to leave the examination centre and shall be disqualified.

Candidates should reach the examination center at least 30 minutes before the commencement of the examination.

## SCHEDULE OF WRITTEN EXAMINATION

Date of Test : **21st January, 2018**: All UG and PG Programmes

PRO-GRAMMES	Test	Test Timings
Bachelor of Design	CAT	10.00 am to 01.00 pm
	GAT	02.30 pm to 04.30 pm
Master of Design	CAT	10.00 am to 01.00 pm
	GAT	02.30 pm to 04.30 pm
Bachelor of Fashion Technology	GAT	10.00 am to 01.00 pm
Master of Fashion Technology	GAT	10.00 am to 01.00 pm
Master of Fashion Management	GAT	10.00 am to 01.00 pm

**The result of the entrance examination will be displayed on the NIFT website.**

On the basis of result of written test GAT and CAT, shortlisted B.Des candidates will be called for second test called Situation Test. For B.F.Tech. candidates, GAT will be the final test for selection. The candidates for M.Des will take GAT and CAT. On the basis of the result of GAT and CAT, in the case of M.Des. and GAT in the case of M.F.Tech and MFM, candidates will be called for Group Discussion/Personal Interview (GD/PI).

Candidates applying for the examination should ensure that they fulfill all the eligibility criteria for admission. Their admission at all the stages of the examination viz. Written Test, Situation Test, Group Discussion and Interview (as the case may be) will be provisional, subject to their satisfying the prescribed eligibility criteria. During verification at any time before or after the Written Test, Situation Test, Group Discussion and Interview (as the case may be), if it is found that candidate does not fulfill the eligibility criteria, his/her candidature for the examination / admission shall stand cancelled without any notice or further reference. NIFT shall not be liable for any consequences on account of such cancellations.

The weightage assigned to each test in the final merit list of the entrance examination will be as under:

PRO-GRAMMES	Test	Weightage
Bachelor of Design	CAT	50%
	GAT	30%
	Situation Test	20%
Master of Design	CAT	40%
	GAT	30%
	GD/PI	30%
Bachelor of Fashion Technology	GAT	100%
Master of Fashion Technology	GAT	70%
	GD/PI	30%
Master of Fashion Management	GAT	70%
	GD/PI	30%

In case of equal scores of two candidates, the older candidate (as per date of birth) will be given preference.

## DESCRIPTION OF COMPONENTS OF ENTRANCE EXAMINATION

**GENERAL ABILITY TEST (GAT) FOR BACHELOR OF DESIGN (B.DES.) AND MASTER OF DESIGN (M.DES.) :**

This test will comprise of various sections as given below:

- 1) Quantitative Ability

- 2) Communication Ability
- 3) English Comprehension
- 4) Analytical Ability
- 5) General Knowledge and Current Affairs

The number of questions may vary in each section year to year.

## TEST STRUCTURE

PRO-GRAMME	BDES	MDES
PAPER NAME	GAT	GAT
LANGUAGE OF WRITTEN TEST	English	English
TEST DURATION (MIN)	120	120
Sections	No. of Questions	No. of Questions
Quantitative Ability	20	20
Communication Ability	25	30
English Comprehension	25	30
Analytical Ability	15	25
General Knowledge and Current Affairs	15	15
TOTAL	100	120

1) Quantitative Ability: This sub-test is designed to test the quantitative ability of the candidates. The sub-test may include questions on Addition, Multiplication, Division, Fractions, Percentage, Rate of Interest, Work and Task, Ratio and Proportion, and Distance.

2) Communication Ability: This subtest is aimed at testing the language ability of the candidates in day to day communication in English. It includes questions on synonyms, antonyms, words with corresponding meanings, singular, plural, one word substitutes, idioms and phrases, correct spellings etc.

3) English Comprehension: This subtest aims to test the candidate's ability to comprehend a situation from a given passage, and test of basic English language.

4) Analytical Ability: This sub-test is designed to test the candidate's capacity for ability of inference and logic from the given information.

5) General Knowledge and Current Affairs: This sub-test is designed to test the candidate's general knowledge and current affairs.

## CREATIVE ABILITY TEST (CAT)

This test is administered to judge the intuitive ability, power of observation in concept development and design ability of the candidate. An important aspect of the test is the creative and innovative use of colour and illustration skills.

## GENERAL ABILITY TEST (GAT)

**For Bachelor of Technology (B.F.Tech.), Master of Fashion Management (M.F.M), Master of Design (M.Des.) and Master of Fashion Technology (M.F.Tech.).**

This test will comprise of various sections as given below:

- 1) Quantitative Ability
- 2) Communication Ability and English Comprehension
- 3) Analytical and Logical Ability
- 4) General Knowledge and Current Affairs
- 5) Case Study

## TEST STRUCTURE

PRO-GRAMME	BFTECH	MFTECH	MFM
PAPER NAME	GAT	GAT	GAT
LANGUAGE OF WRITTEN TEST	English	English	English
TEST DURATION (MIN)	180	180	180
Sections	No. of Questions	No. of Questions	No. of Questions
Quantitative Ability	30	30	10

Communication Ability & English Comprehension	45	45	50
Analytical & Logical Ability	25	25	25
General Knowledge and Current Affairs	25	25	25
Case Study	25	25	40
Total	150	150	150

1) Quantitative Ability: This sub-test is designed to test the quantitative ability of the candidates. The sub test consists of questions on Addition, Multiplication, Division, Fractions, Percentage, Rate of Interest, Work and Task, Ratio and Proportion, and Distance.

2) Communication Ability and English Comprehension: This sub-test is aimed at testing the language ability of the candidates in day to day communication in English. It includes questions on synonyms, antonyms, words with corresponding meanings, singular, plural, one word substitutes, idioms and phrases, correct spellings, comprehend a situation from a given passage etc.

3) Analytical Ability and Logical Ability: This sub-test is designed to test the candidate's capacity for inference and logic from the given information and to evaluate the candidate's ability to identify a the given problem and apply reasoning in solving the core issues of the problem. Concepts and practice of creative and lateral thinking are likely to be useful.

4) General Knowledge and Current Affairs: This sub-test is designed to test the candidate's general knowledge and current affairs.

5) Case Study: This sub-test is based on a situation of an industry environment. It helps to evaluate the candidate's managerial ability.

M.F Tech will also have some questions from the engineering field.

The number of questions may vary in each section and for each course year to year. The level of difficulty in questions for all courses may vary.

Short listed candidates from the written

entrance examination are required to take the Situation test/Group Discussion (GD) / Interview as applicable (except B.FTech).

### SITUATION TEST

Shortlisted candidates for B.Des from the written entrance examination are required to take a Situation Test which is a hands-on test to evaluate the candidate's skills for material handling and innovative ability on a given situation with a given set of materials.

No additional material will be provided / allowed.

The model will be evaluated on space visualization, innovative and creative use of given material, composition of elements, colour scheme, construction skill, finesse of the model and overall presentation etc. These parameters will be checked with the write up explaining the concept behind the model constructed. Since the medium of instruction in NIFT is English, the write-up will be in English. No marks will be given for write-up in any other language.

The use of outside/additional material in making the model/design is not permitted. Also, candidates who try to disclose their identity by writing any personal details or place any identification mark on the model/ design/write-up shall be considered "DISQUALIFIED" and the final result of these candidates shall not be declared.

The evaluation of the test will be done by the Jury on the spot. The model will not be preserved for future reference.

### GROUP DISCUSSIONS

Shortlisted candidates for Masters Programs from the written entrance examination are required to undergo Case Study based Group Discussions (GD) and Personal Interview (PI). GD would comprise approximately 15 to 20 minutes of discussion on a case study assigned, on which a panel of experts will assess the candidates on various parameters including:

- 1) Conceptual clarity
- 2) Knowledge of the topic assigned
- 3) Contribution made to the topic
- 4) Interpersonal skills
- 5) Ability to generate new ideas
- 6) Problem solving approach
- 7) Leadership qualities
- 8) Effective communication

### PERSONAL INTERVIEW

Candidates shall be evaluated on the various parameters as listed below by a panel, in the Personal Interview:

- 1) Career orientation
- 2) Aptness for the course
- 3) Overall personal achievements in academics and co-curricular activities
- 4) Communication
- 5) General awareness and aptitude, creative and lateral thinking

**As no separate training is required for the above, NIFT does not recommend or endorse any coaching classes.**

### COUNSELLING

The details of counselling viz. the mode, dates and procedure will be available on the website in the month of **May / June 2018**. Candidates are advised to regularly check the NIFT website for further information.

The following documents along with the photocopies shall be required for Admission after qualifying the entrance examination.

The original certificates, except the medical certificate, will be returned to the candidate after verification.

(i) Original certificates of qualifying examination i.e. 12th class/degree (marks Sheet and Certificate).

In case of admission to PG courses, the candidates will also be required to bring the original certificate (Mark Sheet and Certificate) of the qualifying degree examination. In case the candidate has appeared in final semester/ final year (as applicable) then he/she will have to bring the original mark sheet of all the previous semester/years.

(ii) In case the candidate has appeared for qualifying exam/compartments (of final year/semester) and the result is due, the date sheet /admit card for examination has to be brought.

(iii) Bank Draft(s) of requisite fee in favour of "NIFT HO" has to be bought. The name of the candidate, date of counselling, phone/ mobile no., name of the programme, Category, Rank and Roll Number are to be mentioned at the back of Bank Draft(s).

(iv) Proof of date of birth (Secondary School Mark Sheet & Certificate) (Original and Photocopy).

(v) SC/ST/OBC - Non-Creamy/PWD (supported with requisite Certificate). For State Domicile seats the status of domicile will be decided by the address of school / college (qualifying degree) last attended, whichever applicable.

(vi) Basis of funding of the tuition fee/certificate of the parents income e.g Income Tax Return of 2017-18, Salary Certificate of March'2018 etc.

(vii) Certificate of Medical Fitness to be signed by a Registered Medical Practitioner in the prescribed format in original.

(viii) Affidavit on non-judicial stamp paper of Rs.10/- for seeking provisional admission only in case, the result of qualifying examination is yet to be declared (in the format at Annexure-I).

(ix) An undertaking regarding Anti-Ragging (Annexure-II)

(x) An undertaking regarding refund of fee (Annexure-IV)

#### Note: -

In case any of the above document(s) is/are in any language other than Hindi/ English, then as the authentic translation in English/Hindi should be produced duly verified by the issuing institution/ gazetted officer / Self attested (original and photocopy) by the candidate at the time of Counselling / Admission. Failure on the part of candidate to produce the requisite authentic translation may result in refusal of admission.

### CANCELLATION OF ADMISSION:

(i) Only qualifying the entrance examination shall not, ipso facto, entitle a candidate for admission to a programme;

(ii) If NIFT is not satisfied with character, past behavior or antecedents of a candidate, it can refuse to admit him/her to any course of study at any Campus or cancel the admission at a later stage.

(iii) If at any stage it is found that a candidate has got admission in any Campus /Programme on the basis of false information, or by hiding relevant facts or if it is found that admission was given due to any mistake or oversight, the admission granted to such candidate shall be liable to be cancelled forthwith without any notice at any time during the course of his/ her studies by the DG-NIFT and fee deposited by the candidate will be forfeited.



(iv) If a candidate does not report to the allotted / re-allotted NIFT campus within 7 days of commencement of the session, the admission of the candidate will stand cancelled without any intimation and the tuition fee paid shall be forfeited.

(v) The Director General may cancel the admission of any student for specific reason or debar him/her for a certain period.

(vi) It will be the sole responsibility of the candidate to make sure that they are eligible and fulfill all the conditions prescribed for admission. Before issue of admission receipt at the time of allotment of seats, candidates should ensure that he/she fulfills all eligibility criteria as laid down in Admission brochure. If it is found at any stage during the entire period of the programme that the candidate does not fulfill the requisite eligibility conditions, his/her admission will be cancelled and entire fee will be forfeited;

(vii) The merit will be valid only for the programme/ category for which the candidate has appeared and cannot be utilized for admission to any other programme/ category. Further, the merit of the candidate shall be valid only for the academic session 2018-19.

**NOTE :** All admissions shall be completed on or before the last date decided by the Director General.

### AGAINST RAGGING:

Ragging in educational institutions is strictly banned and any student indulging in ragging is liable to be punished appropriately, which may include expulsion from the institution, suspension from the institution or classes for a limited period or fine with a public apology. The punishment may also take the shape of

(i) withholding fee subsidy/ scholarships or other benefits, (ii) debarring from representation in events, (iii) withholding results, (iv) suspension or expulsion from hostel or mess. If the individual committing or abetting ragging is not/cannot be identified, collective punishment can be awarded to act as a deterrent.

The following will be termed as the act of ragging:

Any disorderly conduct whether by words spoken or written or by an act, which has the effect of teasing, treating or behaving rudely with any other student(s), indulging in rowdy or undisciplined activities which causes or is likely to cause annoyance,

hardship, psychological harm or to cause fear or apprehension thereof in new or junior student(s) or asking the student(s) to perform any act which such student(s) would not do in the ordinary course and which has the effect of causing or generating a sense of shame or embarrassment so as to adversely affect the physique or psyche of a new or junior student. Rules/laws framed by the Government against ragging will be applicable (Annexure-II).

### POINTS TO BE NOTED:

- NIFT does not recommend or endorse any coaching classes.
- NIFT reserves the right to add or discontinue any programme at any Campus
- Any attempt to influence the admission process by way of recommendation will invite immediate disqualification of the candidate (s).
- Requests for rechecking of GAT or CAT will be restricted to checking of following:
  - Whether all the answers have been evaluated
  - Mistake in the totaling of marks
- Any requests sent without a scanned copy of the Admit Card will not be responded.

**NOTE: ALL INFORMATION REGARDING THE ADMISSION PROCESS WILL BE AVAILABLE ONLY ON THE NIFT WEBSITE. CANDIDATES APPLYING TO NIFT SHALL BE DEEMED TO HAVE COMPLETE UNDERSTANDING OF THE ELIGIBILITY AND THE PROCESS AS DISCLOSED ON THE NIFT WEBSITE. NIFT SHALL NOT BE RESPONSIBLE FOR ANY IGNORANCE ON THE PART OF THE CANDIDATE.**

### EDUCATIONAL LOAN

NIFT has signed an MOU with the Union Bank of India (UBI) for Student Education Loans at a special rate of interest of 11.75%. The rate of interest is 11.25% for candidates belonging to SC/ST category. Girl students also enjoy a rate of interest of 11.25%. UBI has issued pre-approved sanction of loans to all aspirants who gain admission at NIFT. The pre-approved sanction letter is at Annexure V. The students can approach any Branch of UBI across the country with proof of admission to NIFT for availing the facility.

### NIFT Means - cum - Merit Financial Assistance Scheme

NIFT offers limited subsidies to meritorious students who are in need of financial assistance as per the provisions made in Means-cum-Merit Financial Assistance Scheme. Availability of Financial Assistance under this scheme cannot be assured.

Students who are interested in availing this facility should submit their application along with parental income certificate and contact the Student Development Activity Coordinator (SDAC) at their campus after admission.

NIFT also offers assistance through a Student Assistantship Programme on campus. This gives them part time employment within the institute.

### Withdrawal of Admission after admission and refund of fee:

(i) A candidate, who has taken admission once and then withdraws, will not be considered for admission during subsequent rounds of counselling.

(ii) In case the candidate is seeking refund before commencement of academic session, the request for withdrawal of admission in the prescribed proforma (Annexure-III) may be submitted to the Director of the Campus where the candidate attended the counselling. After commencement of the academic session, refund request may be submitted to the Director of the Campus allotted to the candidate. The candidates will be required to surrender the original Admission Receipt issued at the time of Counseling/Admission while applying for withdrawal of admission. Requests for withdrawal of admission would not be entertained without original admission receipt.

(iii) The refund against withdrawal of seat will be governed as under:

S.No	Time	Amount refunded	NRI /SAARC/ Foreign National Candidates
1	On or before 17th July 2018	Full fee except Registration fee	Full fee except 50% tuition fee and Registration fee
2	After 17th July 2018 but before the date of start of last round of counseling	Full fee except 50% tuition fee and Registration fee	
3	On or after the date of start of last round of counseling*	Only Security deposit	

\*Date of start of last round of counseling will be published on the NIFT website

**NOTE: No representation at later stage will be entertained by the Institute. No further correspondence in this regard will be made under any circumstances.**



प्रवेश दिशा-निर्देश - 2018



# प्रवेश संबंधी दिशानिर्देश 2018

## प्रवेश कैलेंडर-2018

ऑनलाइन पंजीकरण	20 अक्टूबर, 2017
ऑनलाइन पंजीकरण की अंतिम तिथि	29 दिसम्बर, 2017
सिर्फ क्रेडिट/डेबिट कार्ड के माध्यम से 5000/-रुपए के विलम्ब शुल्क (लागू आवेदन फीस के अतिरिक्त) के साथ ऑनलाइन पंजीकरण की अंतिम तिथि। डिमांड ड्राफ्ट की स्थिति में, डिमांड ड्राफ्ट के साथ आवेदन का प्रिंट आउट दिए गए पते पर 02 जनवरी, 2018 से पूर्व पहुँच जाना चाहिए।	02 जनवरी, 2018
आवेदन फार्म में सुधार/अद्यतन करने के लिए विंडो	30 दिसम्बर, 2017 शनिवार (12:00 बजे) से 02 जनवरी, 2018 मंगलवार (16:00 बजे) तक
सभी अंडरग्रेजुएट और पोस्टग्रेजुएट प्रोग्राम के लिए लिखित प्रवेश परीक्षा	21 जनवरी, 2018
लिखित प्रवेश परीक्षा का परिणाम	फरवरी/मार्च, 2018
सिच्युएशन टेस्ट/समूह चर्चा/साक्षात्कार	अप्रैल-मई, 2018
अंतिम परिणाम की घोषणा (ऑनलाइन)	मई/जून, 2018 के अंत तक
काउंसलिंग	मई/जून, 2018 के बाद से

नोट:- प्रवेश पत्र, परीक्षा परिणाम और काउंसलिंग प्रोग्राम की जानकारी केवल निफ्ट की वेबसाइट पर उपलब्ध होगी। कोई भी जानकारी डाक द्वारा अलग से नहीं भेजी जायेगी।

## कौन आवेदन कर सकते हैं?

### बैचलर प्रोग्राम:

अधिकतम आयु: 01 अक्टूबर, 2017 को 23 वर्ष। अनुसूचित जाति/अनुसूचित जनजाति/विकलांग व्यक्ति (पीडब्ल्यूडी) वाले अभ्यर्थियों के लिए अधिकतम आयु सीमा में 5 (पांच) साल की अवधि तक की छूट दी जा सकती है बशर्ते वे निम्नलिखित योग्यता पूरी करते हो:

### बैचलर ऑफ डिजाइन - बी. डैस - बैचलर प्रोग्राम के लिए पात्रता:

(फैशन डिजाइन/लेदर डिजाइन/एसेसरी डिजाइन/टेक्सटाइल डिजाइन/ निटवियर डिजाइन/ फैशन कम्यूनिकेशन)

- किसी भी मान्यता प्राप्त केंद्रीय/राज्य माध्यमिक परीक्षा बोर्ड की परीक्षा के 10 +2 पैटर्न में +2 स्तर की परीक्षा पास किया होना चाहिए जैसे केंद्रीय माध्यमिक शिक्षा बोर्ड/राज्य बोर्ड, नई दिल्ली और काउंसिल ऑफ इंडियन स्कूल सर्टिफिकेट एग्जामिनेशंस, नई दिल्ली।

या

- एडवांस (ए) स्तर/अंतर्राष्ट्रीय स्तर (आईबी) की सामान्य प्रमाण-पत्र शिक्षा (जीसीई) परीक्षा (लंदन/कैम्ब्रिज/श्रीलंका)।

या

- भारतीय विश्वविद्यालय संघ द्वारा मान्यता प्राप्त भारत या विदेश में स्थित किसी भी पब्लिक स्कूल/बोर्ड/विश्वविद्यालय की परीक्षा 10 +2 पद्धति के समकक्ष पास होनी चाहिए।

या

- राष्ट्रीय मुक्त विद्यालय द्वारा आयोजित उच्च माध्यमिक विद्यालय परीक्षा न्यूनतम पांच विषयों के साथ पास होना चाहिए।

या

- एआईसीटीई या किसी राज्य तकनीकी शिक्षा बोर्ड द्वारा मान्यता प्राप्त 3 या 4 वर्षीय डिप्लोमा प्राप्त किया हो।

भी संस्थान/विश्वविद्यालय से किसी भी विषय में अंडरग्रेजुएट की डिग्री प्राप्त की हो।

या

- निफ्ट/एनआईडी से न्यूनतम तीन वर्ष की अवधि का अंडरग्रेजुएट डिप्लोमा प्राप्त किया हो।

नोट: मास्टर ऑफ डिजाइन (एम. डैस) एक उच्च स्तर का पाठ्यक्रम है जो डिजाइन में मूलभूत सिद्धान्त की समझ की मांग करता है और यह माना जाता है कि अभ्यर्थी इस प्रोग्राम को सफलतापूर्वक पूरा करने के लिए मूलभूत कौशल और सिद्धान्तों से परिचित होगा। अपने मास्टर प्रोग्राम के एक भाग के रूप में पाठ्यक्रम के तहत कोई मूलभूत जानकारी और डिजाइन में कौशल विकास की जानकारी नहीं दी जाएगी।

### मास्टर प्रोग्राम - मैनेजमेंट के लिए पात्रता

### मास्टर ऑफ फैशन मैनेजमेंट (एमएफएम)

- भारत में विधि द्वारा मान्यता प्राप्त किसी भी संस्थान/विश्वविद्यालय से किसी भी विषय में अंडरग्रेजुएट की डिग्री प्राप्त की हो।
- या
- निफ्ट/एनआईडी से न्यूनतम तीन वर्ष की अवधि का अंडरग्रेजुएट डिप्लोमा प्राप्त किया हो।

### मास्टर प्रोग्राम - टैक्नालॉजी के लिए पात्रता

### मास्टर ऑफ फैशन टैक्नालॉजी (एमएफटेक)

- निफ्ट से बी.एफ.टैक
- या
- भारत में विधि द्वारा मान्यता प्राप्त किसी भी संस्थान/विश्वविद्यालय से बीई/बीटेक की डिग्री प्राप्त की हो।

### महत्वपूर्ण टिप्पणी

1. अर्हता परीक्षा में बैठने वाले अभ्यर्थी आवेदन के लिए भी पात्र हैं, बशर्ते :

(क) कि उन्होंने काउंसलिंग/प्रवेश के समय निर्धारित न्यूनतम अर्हता प्राप्त करने का प्रमाण प्रस्तुत कर दिया है।

या

(ख) यदि 12वीं कक्षा/अंतिम वर्ष/अंतिम सेमेस्टर (जैसा भी मामला हो) जैसी अर्हता वाली डिग्री/प्रमाण-पत्र परीक्षा का परिणाम संबंधित बोर्ड/विश्वविद्यालय द्वारा

### बैचलर प्रोग्राम - टैक्नालॉजी के लिए पात्रता:

### बैचलर ऑफ फैशन टैक्नालॉजी (अपैरल प्रोडक्शन) (बीएफटेक)

- किसी भी मान्यता प्राप्त केंद्रीय/राज्य माध्यमिक परीक्षा बोर्ड की परीक्षा के 10 +2 पैटर्न में +2 स्तर की परीक्षा पास किया होना चाहिए जैसे भौतिक विज्ञान, रसायन विज्ञान और गणित विषय के साथ केंद्रीय माध्यमिक शिक्षा बोर्ड, नई दिल्ली और काउंसिल ऑफ इंडियन स्कूल सर्टिफिकेट एग्जामिनेशंस, नई दिल्ली।

या

- भौतिक विज्ञान, रसायन विज्ञान और गणित विषय के साथ एडवांस (ए) स्तर/अंतर्राष्ट्रीय स्तर (आईबी) की सामान्य प्रमाण-पत्र शिक्षा (जीसीई) परीक्षा (लंदन/कैम्ब्रिज/श्रीलंका)।

या

- भारतीय विश्वविद्यालय संघ द्वारा मान्यता प्राप्त भारत या विदेश में स्थित किसी भी पब्लिक स्कूल/बोर्ड/विश्वविद्यालय की परीक्षा भौतिक विज्ञान, रसायन विज्ञान और गणित विषय के साथ 10+2 पद्धति के समकक्ष पास होनी चाहिए।

या

- राष्ट्रीय मुक्त विद्यालय द्वारा आयोजित उच्च माध्यमिक विद्यालय परीक्षा भौतिक विज्ञान, रसायन विज्ञान और गणित विषय के साथ न्यूनतम पांच विषयों के साथ पास होना चाहिए।

या

- एआईसीटीई या किसी राज्य तकनीकी शिक्षा बोर्ड द्वारा मान्यता प्राप्त इंजीनियरिंग की किसी भी ब्रांच में 3 या 4 वर्षीय डिप्लोमा प्राप्त किया हो।

### मास्टर प्रोग्राम:

आयु: कोई आयु सीमा नहीं

### मास्टर प्रोग्राम - डिजाइन के लिए पात्रता

### एम. डैस (मास्टर ऑफ डिजाइन)

- भारत में विधि द्वारा मान्यता प्राप्त किसी

काउंसलिंग/प्रवेश की तिथि तक घोषित नहीं किया है, तो ऐसी स्थिति में उनका दाखिला निम्नलिखित शर्तों के अध्यक्षीन पूर्णतः अस्थायी होगा:

(i) 10/-रूपये मूल्य के गैर-न्यायिक स्टैम्प पेपर पर नियत प्रारूप (अनुबंध-1) में एक शपथ-पत्र जमा करना होगा। यदि अभ्यर्थी नाबालिग है अर्थात् 18 साल से कम उम्र का है, तो शपथ-पत्र पर उसके माता-पिता/अभिभावक के हस्ताक्षर होंगे। अभ्यर्थी/माता-पिता/अभिभावक यह नोट कर लें कि गलत हलफनामा जमा करना एक दंडनीय अपराध है।

(ii) अभ्यर्थी योग्यता पूरी करने वाली डिग्री/प्रमाण-पत्र परीक्षाओं के अंतिम परिणाम 30 सितम्बर 2018 तक अपने कैम्पस, जहाँ उसे प्रवेश मिला है, के निदेशक/संयुक्त निदेशक के पास जमा कराना होगा।

(iii) अगर अभ्यर्थी योग्यता पूरी करने वाली डिग्री/प्रमाण-पत्र परीक्षाओं के अंतिम परिणाम 30 सितम्बर 2018 तक किसी भी कारण से जमा कराने में असमर्थ रहता है तो उसका दाखिला रद्द कर दिया जायेगा और उसकी पूरी फीस जब्त कर ली जाएगी। इस नियम के तहत कोई छूट देना या न देना महानिदेशक-निफ्ट के फैसले पर निर्भर करेगा जो वे मामला-दर-मामला के आधार पर लेंगे।

(iv) यह सुनिश्चित करना कैम्पस के निदेशक/नोडल अधिकारी की जिम्मेदारी होगी कि सभी अभ्यर्थी प्रवेश संबंधी निर्धारित अर्हताएं पूरी करते हैं विशेषकर अस्थाई प्रवेश के मामले में। अगर अभ्यर्थी समय पर अर्थात् 30 सितम्बर, 2018 तक अपना परीक्षा परिणाम जमा करने में विफल रहता है तो उनका अस्थायी प्रवेश स्वतः रद्द हो जायेगा।

(v) वे अभ्यर्थी जो अपने अंतिम वर्ष/अंतिम सेमेस्टर/12 वीं कक्षा (कृपया अनुबंध-1 देखें) के परीक्षा परिणाम घोषित नहीं होने की वजह से अस्थाई दाखिला लेना चाहते हैं, उन्हें इस बात का प्रमाण जमा कराना होगा कि उन्होंने अर्हता वाली डिग्री परीक्षा (जो भी प्रासंगिक हो) के पिछले साल/सेमेस्टर के सभी पेपर उत्तीर्ण कर लिए हैं।

(vi) अभ्यर्थी अर्हता वाली परीक्षा में बैठने के प्रमाण के रूप में डेट शीट/प्रवेश पत्र/प्रधानाचार्य का प्रमाण पत्र भी लेकर आएंगे।

(vii) ऐसे अभ्यर्थी जिन्होंने स्नातक के अंतिम सेमेस्टर/अंतिम वर्ष में पूरक परीक्षा (ओं) के

लिए परीक्षा दी हैं और काउंसलिंग/प्रवेश के समय तक उनका परिणाम घोषित नहीं हुआ है, तो ऐसे अभ्यर्थियों का प्रवेश उपरोक्त पैरा 1(ख) (ii) के अनुसार शैक्षिक सत्र 2018-19 के लिए माना जाएगा।

(viii) ऐसे अभ्यर्थी जिन्होंने 12वीं कक्षा में पूरक परीक्षा (ओं) में सम्मिलित हुए हैं, ऐसे अभ्यर्थी को केवल अस्थायी प्रवेश हेतु विचार किया जाएगा। यद्यपि उन्हें उसी बोर्ड की पूरक परीक्षा को पास करना होगा ऐसा न कर पाने की स्थिति में अस्थायी प्रवेश स्वतः रद्द हो जाएगा और संपूर्ण फीस जब्त करली जाएगी।

2. कोई भी अभ्यर्थी जो निफ्ट की काउंसलिंग/प्रवेश की तिथि से पहले अर्हता वाली परीक्षा में उपस्थित नहीं हुआ है, वह पात्र नहीं माना जाएगा।

3. यह भी स्पष्ट किया जाता है कि अस्थायी प्रवेश उन्हीं मामलों में विचाराधीन होगा जहाँ क्वालिफाइंग डिग्री के अंतिम वर्ष/सेमेस्टर का परिणाम संबंधित बोर्ड/विश्वविद्यालय द्वारा पूर्णतः घोषित नहीं किया गया है। यदि संबंधित बोर्ड/विश्वविद्यालय द्वारा परिणाम घोषित किया जा चुका है पर किसी कारण वश किसी विशेष मामले में परिणाम घोषित नहीं किया गया है, ऐसे मामले अस्थाई प्रवेश की श्रेणी में नहीं माने जायेंगे।

### सीटों का आरक्षण

प्रत्येक प्रोग्राम में अनुसूचित जाति/अनुसूचित जनजाति/विकलांग व्यक्ति (पीडब्ल्यूडी)/विदेशी नागरिकों/ सार्क/ राज्य विशेष के निवासी अभ्यर्थियों के लिए सीटें निम्नलिखित ढंग से आरक्षित हैं:

अनुसूचित जाति	15%
अनुसूचित जनजाति	7.5%
अन्य पिछड़ी जाति(गैर-संपन्न)	27%
विकलांग (पीडब्ल्यूडी)	5% विकलांग अभ्यर्थी के लिए सामानांतर आरक्षण (विकलांगता 40% या उससे ज्यादा होनी चाहिए) यह आरक्षण सभी श्रेणियों अर्थात् अनुसूचित जाति, जनजाति, अन्य पिछड़ी जातियों के गैर-संपन्न और सामान्य श्रेणी में लागू है। कैम्पस और प्रोग्राम का आवंटन निफ्ट के विवेक पर रोटेशन विधि से किया जायेगा।
विदेशी नागरिक/ सार्क/एनआरआई	15% (अधिसंख्या के आधार पर)
राज्य विशेष के निवासी	20% (अधिसंख्या के आधार पर)

अर्हता प्राप्त अभ्यर्थी को निफ्ट की पात्रता और दाखिला संबंधी आवश्यकताओं को पूरा करना होगा।

### प्रत्येक श्रेणी की पात्रता निम्नलिखित हैं:

#### अनुसूचित जाति/अनुसूचित जनजाति अभ्यर्थी

इस आरक्षित कोटे के तहत आवेदन करने वाले अभ्यर्थियों को अपने संबंधित राज्यों/संघ शासित क्षेत्रों/राष्ट्रीय जनजाति आयोग के सक्षम अधिकारी से प्राप्त जाति/जनजाति प्रमाण पत्र प्रस्तुत करना होगा।

#### अन्य पिछड़ी जाति (गैर-संपन्न) अभ्यर्थी

इस आरक्षित कोटे के तहत आवेदन करने वाले अभ्यर्थियों को जाति और नॉन-क्रीमी लेयर की आवश्यकता को पूरा करना होगा। इस कोटे के तहत आवेदन करने वाले अभ्यर्थियों को सक्षम अधिकारी से इस आशय का प्रमाण पत्र प्रस्तुत करना होगा कि वे नॉन-क्रीमी लेयर से ताल्लुक रखते हैं। यह प्रमाण पत्र अभ्यर्थी के नाम से जारी होना चाहिए और यह प्रमाण-पत्र 01 सितम्बर, 2017 से पहले का जारी

नहीं किया होना चाहिए। सक्षम प्राधिकारी से उपयुक्त प्रमाण-पत्र नहीं प्रस्तुत करने पर अभ्यर्थी काउंसलिंग के लिए अयोग्य हो जायेंगे और आवेदक को प्रवेश नहीं दिया जायेगा। अस्थायी प्रवेश दिए जाने के अनुरोध पर विचार नहीं किया जायेगा। संक्षेप में:

(क) अभ्यर्थी के पास अन्य पिछड़ी जाति (नॉन-क्रीमी) संबंधी प्रमाण-पत्र उसके स्वयं के नाम होना चाहिए न कि उनके माता-पिता के नाम।

(ख) अन्य पिछड़ी जाति (नॉन-क्रीमी) के प्रमाण-पत्र में बताई गई जाति <http://ncbc-nic-in/backward&classes/index.html> उस पर उपलब्ध अन्य पिछड़ी जाति की केंद्रीय सूची में उल्लिखित होना चाहिए।

(ग) अन्य पिछड़ी जाति के प्रमाण-पत्र में स्पष्ट लिखा होना चाहिए कि अभ्यर्थी गैर-सम्पन्न समुदाय से है।

(घ) यह प्रमाण-पत्र सक्षम प्राधिकारी द्वारा जारी किया होना चाहिए।

(ङ) उन मामलों में जहां विवाहित महिला ने आरक्षित श्रेणी में आवेदन किया हो, उसे स्वयं के नाम से जारी जाति प्रमाण-पत्र प्रस्तुत करना होगा। पति/माता/माता-पिता के नाम का प्रमाण-पत्र स्वीकार्य नहीं होगा।

#### विकलांग (पीडब्ल्यूडी)

इस श्रेणी के अंतर्गत आवेदन कर रहे अभ्यर्थी विकलांग व्यक्तियों के अधिकार अधिनियम, 2016 (2016 का 49) की धारा 58 की उप-धारा (2)(क) के अनुसार जारी फार्म V फार्म VI या दिनांक 15 जून, 2017 को जीएसआर सं. 591 (ई) की अधिसूचना के नियम 18 (1) के अनुसार फार्म VII में विकलांग प्रमाण-पत्र संलग्न करना अपेक्षित होगा। प्रमाण-पत्र अधिनियम की धारा 57 की उप-धारा (1) और जीएसआर सं. 591 (ई) के नियम 17 (क) और (ख) के अंतर्गत विनिर्दिष्ट किसी चिकित्सा प्राधिकारी द्वारा जारी किया जाना चाहिए।

ऐसे अभ्यर्थियों को काउंसलिंग और दाखिला दोनों ही समय प्रमाण-पत्र की मूल प्रतियां प्रस्तुत करनी होंगी।

विकलांग अभ्यर्थियों को काउंसलिंग में मूल्यांकन के लिए उपस्थित होना आवश्यक है। ऐसे अभ्यर्थियों को उनकी क्षमता का आंकलन के पश्चात कोर्स आवंटित किया जायेगा। निफ्ट, पीडब्ल्यूडी छात्रों के आंकलन



के समय बाहरी सहायता की व्यवस्था इस शर्त के साथ कर सकता है कि ऐसे किसी भी काम के लिए आवश्यक खर्च छात्र/आवेदनकर्ता को वहन करना होगा।

हालांकि यह सिफारिश की जाती है कि छात्र/आवेदनकर्ता इस उद्देश्य के लिए अपने स्वयं के बाहरी सहायक का इंतजाम खुद ही करें क्योंकि इससे उन्हें अपना मूल्यांकन करवाने में सुविधा होगी।

निफ्ट किसी विशेष प्रोग्राम/पाठ्यक्रम के लिए अभ्यर्थी की वास्तविक शारीरिक/मानसिक क्षमता का आंकलन उस प्रोग्राम/पाठ्यक्रम की आवश्यकताओं को ध्यान में रखकर प्रत्येक कैम्पस में वहां के निदेशक द्वारा निर्धारित बोर्ड के द्वारा किया जायेगा।

इस तीन सदस्यीय बोर्ड में चिकित्सा अधिकारी/मनोचिकित्सक, संबंधित विभाग (डिजाइन/टैक्नालॉजी/प्रबंधन) का कोई संकाय शिक्षक और एक प्रशासनिक अधिकारी होगा।

अभ्यर्थियों को काउंसलिंग के समय ऐसे आंकलन के लिए तैयार होकर आने की सलाह दी जाती है। निफ्ट ऐसे आंकलन के लिए अपनी प्रयोगशाला/उपकरण/परीक्षा सामग्री का प्रयोग कर सकता है ताकि अभ्यर्थी के उस प्रोग्राम/पाठ्यक्रम के लिए आवश्यक शारीरिक/मानसिक क्षमता का पता लगाया जा सके, बोर्ड किसी अभ्यर्थी के लिए कोई विशेष परीक्षा भी बना सकता है।

इस श्रेणी के तहत आरक्षण की मांग करने वाले सभी अभ्यर्थियों के लिए यह आंकलन अनिवार्य है।

बोर्ड अपनी कार्यवाहियों में यह अनुशांसा करेगा कि अभ्यर्थी उक्त प्रोग्राम में भाग लेने सक्षम है या नहीं, जिसके लिए उसने आवेदन किया है।

ऐसे किसी भी आदेश की प्रति अभ्यर्थी को लिखित में भी पावती के साथ भेजी जाएगी, इसमें उसे यह भी बताया जायेगा कि वह इस आदेश के खिलाफ अपील कर सकता है, इस स्थिति में यह अपील मुख्यालय के स्थायी बोर्ड को भेज दी जायेगी, जिसकी अनुशांसा अंतिम होगी और इसके खिलाफ कोई अभ्यावेदन स्वीकार नहीं किया जायेगा।

निफ्ट किसी भी अभ्यर्थी को किसी खास प्रोग्राम में प्रदर्शन नहीं कर पाने की दशा में अयोग्य करार देने का अधिकार रखता है।

निम्नलिखित तालिका यह बताती है कि अगर छात्र को मुख्यधारा के पाठ्यक्रम में प्रवेश के लिए योग्य पाया जाता है तो विकलांगता की विभिन्न श्रेणियों और प्रोग्राम के लिए निफ्ट के बोर्ड द्वारा किस तरह का आंकलन किया जा सकता है:

प्रोग्राम	मापदंड/पद्धति	उपयुक्तता				
		दृष्टि स्पष्टता	मामूली रूप से बोलने में अशक्तता	मामूली रूप से सुनने में अशक्तता	हाथ, पैर, मुख व गले में कोई बड़ा लोकोमोटर नहीं	कलात्मकता के साथ ड्राईंग या मॉडल में दृश्य और मौखिक जानकारी को चुनने, व्यवस्थित करने और एकीकृत करने में सक्षम।
डिजाइन	ड्राईंग/स्केचिंग/मॉडल बनाना/रंग का बोध					
<p>सामान्य अपेक्षाएं</p> <p>मुख्यधारा की पाठ्यचर्या को समझने के लिए पर्याप्त ज्ञान चाहिए न कि कोई बौद्धिक दोष। अकादमिक और/या संप्रेषण कौशल में अनुकूल कार्य में थोड़ी कमी दर्शाती है लेकिन पाठ्यचर्या की अपेक्षाओं को पूरा करने की योग्य हो और स्वतंत्र रूप से सहायक उपकरणों का प्रयोग करके परिवेश से सीखने योग्य हो। बड़े समूह में सीखने की व्यवस्था के अनुकूल होने के लिए अच्छा सामाजिक परिचर्चा कौशल तथा भावनात्मक रूप से सक्षम होना चाहिए तथा चुनौतीपूर्ण व्यवहार नहीं होना चाहिए जो दूसरे छात्रों की शिक्षा में बाधा उत्पन्न न कर सकें।</p>						

प्रोग्राम	मापदंड/पद्धति	उपयुक्तता			
		मामूली रूप से देखने में स्पष्टता	मामूली रूप से बोलने में अशक्तता	मामूली रूप से सुनने में अशक्तता	हाथ, पैर, मुख व गले में कोई बड़ा लोकोमोटर नहीं
टैक्नालॉजी	मैनुअली मशीन/कम्प्यूटर की बोर्ड चलाना/मोबीलिटी				
फैशन मैनेजमेंट	मैनुअली कम्प्यूटर की बोर्ड चलाना/मोबीलिटी				
<p>सामान्य अपेक्षाएं</p> <p>मुख्यधारा की पाठ्यचर्या को समझने के लिए पर्याप्त ज्ञान चाहिए न कि कोई बौद्धिक दोष। अकादमिक और/या संप्रेषण कौशल में अनुकूल कार्य में थोड़ी कमी दर्शाती है लेकिन पाठ्यचर्या की अपेक्षाओं को पूरा करने की योग्य हो और स्वतंत्र रूप से सहायक उपकरणों का प्रयोग करके परिवेश से सीखने योग्य हो। बड़े समूह में सीखने की व्यवस्था के अनुकूल होने के लिए अच्छा सामाजिक परिचर्चा कौशल तथा भावनात्मक रूप से सक्षम होना चाहिए तथा चुनौतीपूर्ण व्यवहार नहीं होना चाहिए जो दूसरे छात्रों की शिक्षा में बाधा उत्पन्न न कर सकें।</p>					

### आवेदन फार्म में सुधार/अद्यतन करने के लिए विंडो

भुगतान करने से पहले अभ्यर्थी ऑनलाइन आवेदन में सूचना में सुधार/अद्यतन कर सकता है। अभ्यर्थी द्वारा एक बार भुगतान करने पर उसे सिस्टम द्वारा किसी भी सूचना में परिवर्तन संशोधन करने की अनुमति नहीं दी जाएगी। हालांकि, आवेदक को 30 दिसंबर, 2017 को 1200 बजे से 02 जनवरी, 2018 को 1600 बजे तक आवेदन फार्म में अपनी व्यक्तिगत सूचना (परीक्षा केंद्र के शहर को बदलने की अनुमति नहीं है) की समीक्षा करने और सुधार करने का अवसर प्रदान किया जाएगा।

–आवेदन फार्म में सुधार/अद्यतन करने के पश्चात यदि आवेदक निफ्ट में प्रवेश लेने के लिए पात्र नहीं पाया जाता है, तो पहले से भुगतान की गई आवेदन फीस वापस नहीं की जाएगी।

–आवेदन प्रक्रिया के दौरान सही सूचना प्रदान करने की एकमात्र जिम्मेदारी आवेदक की होगी। किसी भी स्तर पर यदि यह पाया जाता है कि अगर उम्मीदवार द्वारा प्रदान की गई सूचना सही नहीं है, तो निफ्ट के पास उसकी उम्मीदवारी रद्द करने का अधिकार है। संस्थान के प्रबंधन और कर्मचारियों को प्रभावित करने के लिए कोई भी प्रत्यक्ष या अप्रत्यक्ष प्रयास उम्मीदवारों की स्वतः अयोग्यता का कारण होगा।

### विदेशी नागरिक/सार्क/एनआरआई

कुल सीटों का पन्द्रह (15%) अर्थात प्रत्येक

प्रोग्राम में 5 सीटें दिल्ली, मुंबई, कोलकाता, बेंगलुरु, चेन्नई, हैदराबाद, गांधीनगर, रायबरेली और श्रीनगर में विदेशी नागरिकों (चाहे वे भारत या विदेश में रहते हों) और गैर-निवासी भारतीय, भारत का वह नागरिक जिसके पास भारतीय पासपोर्ट हो तथा वह अस्थायी रूप से काम, रिहायश करने या किसी अन्य कार्य के लिए किसी दूसरे देश में छः महीने या उससे अधिक के लिए गया हो, के प्रवेश के लिए आरक्षित हैं। विदेशी नागरिकों/एनआरआई अभ्यर्थियों के लिए निफ्ट के प्रोग्राम में प्रवेश निम्नलिखित परीक्षाओं के आधार पर होगा:

बैचलर प्रोग्राम (बी.डिजाइन एवं बी.एफ.टैक)	एसएटी प्राप्तांक
मास्टर प्रोग्राम (एमएफएम)	जीमैट प्राप्तांक
मास्टर प्रोग्राम (एम. डैस एवं एम. एफ.टैक)	जीआरई प्राप्तांक

अभ्यर्थियों द्वारा प्राप्त किए गए अंकों के अनुसार तैयार की गई एक मेरिट सूची के आधार पर केंद्र/प्रोग्राम आवंटित किए जाएंगे। अभ्यर्थी 30 अप्रैल, 2018 से पहले कितने भी एसएटी/जीएमएटी/जीआरई परीक्षाओं में बैठ सकता है। किसी भी केंद्र में सीट आवंटित करते समय इन सबमें प्राप्त सर्वोच्च अंक पर विचार किया जाएगा।

## विदेशी नागरिक / सार्क / एनआरआई श्रेणी के अंतर्गत आवेदन करने की प्रक्रिया:

इस श्रेणी के अंतर्गत प्रवेश के इच्छुक अभ्यर्थियों को इस वेबसाइट [nift.ac.in](http://nift.ac.in) ; <http://applyadmission-net/NIFTNRI2018> पर ऑनलाइन आवेदन करना होगा। इस श्रेणी के अंतर्गत आवेदन करने की अंतिम तिथि 30 अप्रैल, 2018 है।

निफ्ट के बैचलर प्रोग्राम के लिए आवेदन करने वाले अभ्यर्थियों को अपने एसएटी के प्राप्तांकों को अपने कॉलेज बोर्ड, अमेरिका से सीधे निफ्ट मुख्यालय, नई दिल्ली को भेजने का प्रबंध करना होगा। एसएटी प्राप्तांक कॉलेज बोर्ड से सीधे निफ्ट मुख्यालय, नई दिल्ली को जमा कराया जाना होता है। निर्दिष्ट संस्थान का (डीआई) कोड 7258 है।

अभ्यर्थियों को केंद्र व प्रोग्राम उनके एसएटी/जीएमएटी/जीआरई प्राप्तांकों व उनकी वरीयता और पसंद के आधार पर आवंटित किए जाएंगे।

एसएटी में पंजीकरण के समय अभ्यर्थियों को उनके अंक निफ्ट, मुख्यालय, नई दिल्ली भेजे जाने के लिए डीआई कोड: 7258 स्पष्ट लिखना चाहिए।

मास्टर प्रोग्रामों अर्थात मास्टर ऑफ फैशन मैनेजमेंट (एमएफएम) के लिए आवेदन करने वाले अभ्यर्थियों को अपने जीमैट परीक्षा प्राप्तांक जबकि मास्टर ऑफ डिजाइन (एम. डिजाइन) तथा मास्टर ऑफ फैशन टेक्नालॉजी (एम.एफ.टैक) के लिए आवेदन करने वाले अभ्यर्थियों को अपने जीआरई परीक्षा प्राप्तांक को सीधे निफ्ट मुख्यालय, नई दिल्ली को भेजे जाने का प्रबंध करना चाहिए। जीआरई/जीमैट/एसएटी प्राप्तांक 1 जनवरी, 2016 से पहले घोषित नहीं हुए होने चाहिए व संस्थान को 30 अप्रैल, 2018 तक प्राप्त हो जाने चाहिए। आवेदकों को जीआरई/जीमैट/एसएटी में निफ्ट के प्रोग्राम को अपनी पसंद के तौर पर अंकित कर देना चाहिए।

इस श्रेणी के अंतर्गत प्रवेश प्राप्त करने के इच्छुक अभ्यर्थियों को निर्धारित आवेदन फॉर्म में आवेदन ऑनलाइन करना चाहिए।

**शैक्षिक योग्यता:** सभी अभ्यर्थियों को अपेक्षित शैक्षिक अर्हताओं की पूर्ति करनी होगी। ऐसे मामले में जहां डिग्री/प्रमाण-पत्र किसी दूसरे देश के विश्वविद्यालय/बोर्ड से प्राप्त किया गया है तो प्रवेश से पूर्व, एसोसिएशन ऑफ इंडियन यूनिवर्सिटीज

(एआईयू), नई दिल्ली (वेबसाइट: [www.aiuweb.org](http://www.aiuweb.org)) से एक समकक्ष प्रमाण-पत्र प्राप्त करना होगा।

निफ्ट में शिक्षण का माध्यम अंग्रेजी है और इसलिए निफ्ट में प्रवेश के इच्छुक सभी अभ्यर्थियों को अंग्रेजी भाषा का कार्यसाधक ज्ञान होना चाहिए।

### फीस का भुगतान:

वे अभ्यर्थी जो उपर्युक्त विनिर्दिष्ट प्रवेश मापदण्ड पूरे करते हैं, वे ऑनलाइन निफ्ट भुगतान गेटवे के माध्यम से 100 अमरीकी डॉलर की अपेक्षित आवेदन फीस के साथ आवेदन कर सकते हैं।

इस श्रेणी के अंतर्गत एक बार चयनित होने वाले अभ्यर्थियों को दाखिले के समय पहले शैक्षणिक साल के दो सेमेस्टर्स की फीस जमा करनी होगी। उन्हें इसके साथ ही पूरे प्रोग्राम की अवधि के लिए वैध आवासीय परमिट या छात्र वीजा लेना होगा।

### एनआरआई के बच्चे और आश्रित

कोई भी खाली रह जाने वाली एनआरआई सीट रह हो जाएगी और किसी अन्य श्रेणी में परिवर्तित नहीं की जाएगी। तथापि बची हुई सीटें काउंसिलिंग के दौरान मेरिट के आधार पर एनआरआई के बच्चों/आश्रितों को ऑफर की जाएंगी। निफ्ट पुनः उसके प्रोग्राम के तहत सीटों का आवंटन अभ्यर्थियों की मांग को देखते हुए कर सकता है और ऐसा करते समय इस श्रेणी के लिए निर्धारित समग्र सीटों की सीमा को ध्यान रखा जाएगा।

वे सभी उम्मीदवार जिनके पास कॉमन मेरिट रैंक (सीएमआर) है और जो 'एनआरआई के बच्चे/आश्रित' के अंतर्गत आते हैं, उन्हें एनआरआई सीट चुनने का एक और मौका दिया जायेगा बशर्ते वे इसकी अनिवार्यताओं को पूरा करते हों, उन्हें नियमित काउंसिलिंग के दौरान आवश्यक कागजात एवं फीस जमा करनी होगी।

### विशिष्ट अनिवासी भारतीय (एनआरआई) परीक्षा

तथापि, यदि एनआरआई सीट खाली रहती है तो यह सीट पुनः प्रवेश के लिए विशेष एनआरआई परीक्षा के माध्यम से प्रदान की जाएगी।

वे उम्मीदवार जिनको सिचुएशन टेस्ट/ समूह चर्चा एवं पीआई के लिए शॉर्टलिस्ट नहीं किया जा सका है, उनके साथ-साथ नए

इच्छुक अभ्यर्थी, आवश्यक शैक्षणिक और कागजाती अनिवार्यताओं को पूरा करने के अध्यक्षीन प्रवेश के लिए पात्र होंगे। विशेष एनआरआई परीक्षा/साक्षात्कार नई दिल्ली में आयोजित किया जाएगा। सभी अभ्यर्थियों के लिए पंजीकरण अनिवार्य होगा। ऐसे अभ्यर्थियों जिन्हें सिचुएशन टेस्ट एवं समूह चर्चा तथा पीआई हेतु शॉर्टलिस्ट में आने में विफल रहे हैं, ऐसे अभ्यर्थियों को केवल साक्षात्कार में उपस्थित होना होगा। नए अभ्यर्थियों को दोनों अर्थात लिखित प्रवेश परीक्षा एवं साक्षात्कार में शामिल होना होगा। मेरिट सूची तैयार करते समय जो उम्मीदवार सिर्फ साक्षात्कार में शामिल हुए उन्हें शीर्ष स्थान में रखा जाएगा और नए अभ्यर्थियों को उसके बाद रखा जाएगा। इन मानदंडों के आधार पर एक अंतिम समेकित मेरिट सूची घोषित की जाएगी। सीटों का आवंटन सख्ती पूर्वक मेरिट सूची के अनुसार होगा। अनिवासी भारतीय के बच्चों और आश्रितों के अंतर्गत चयनित किए गए अभ्यर्थियों को अनिवासी अभ्यर्थियों के लिए निर्धारित की गई फीस का भुगतान करना होगा।

**छात्रावास और अन्य खर्च :** एडमिशन विवरण-पुस्तिका (प्रास्पेक्टस) में दर्शाए गई छात्रावास (हॉस्टल) फीस और अन्य खर्च निफ्ट के एक कैम्पस से दूसरे कैम्पस के अनुसार बदल सकते हैं। अभ्यर्थी को हॉस्टल फीस सीधे कैम्पस में दाखिले/जॉइन करने के समय जमा करानी होती है। अभ्यर्थियों को सलाह दी जाती है कि वे छात्रावास के आवास के कमरे और सम्बद्ध खर्च के संबंध में विस्तृत जानकारी के लिए वेबसाइट देखें अथवा निफ्ट कैम्पसों के संबंधित प्राधिकारियों से संपर्क करें।

### राज्य के निवास संबंधी अधिमाम्य सीट

बीस (20%) सीटें अर्थात 6 अतिरिक्त सीटें, 30 सीटों के अलावा, राज्य निवासी अधिमाम्य सीटों के रूप में उन अभ्यर्थियों को प्रवेश की पेशकश की जाएगी जो उस राज्य से संबंध रखता है जहां निफ्ट के निम्नलिखित कैम्पस अवस्थित हैं:

क्रम संख्या	निफ्ट कैम्पस	राज्य
1	पटना	बिहार
2	कांगड़ा	हिमाचल प्रदेश
3	कन्नूर	केरल
4	भोपाल	मध्य प्रदेश
5	शिलांग	मेघालय

6	भुवनेश्वर	उड़ीसा
7	जोधपुर	राजस्थान
8	श्रीनगर*	जम्मू एवं कश्मीर*

\*30 सीटों में से (35%) सीटें जम्मू एवं कश्मीर राज्य के निवासियों को राज्य निवासी अधिमाम्य सीटों के रूप में ऑफर की जाएगी।

अभ्यर्थी को उसी राज्य का निवासी माना जायेगा जहां से उसने अपनी 12वीं कक्षा/ ग्रेजुएशन/अर्हता डिग्री की परीक्षा पास की है। इस आशय का प्रमाण-पत्र विद्यालय या महाविद्यालय से प्राप्त किया जाना चाहिए। ऐसे मामले जहां अभ्यर्थी ने अर्हकता प्रमाण-पत्र/डिग्री दूरस्थ शिक्षा माध्यम (डिस्टेंट लर्निंग) से किया हो वहां अभ्यर्थी द्वारा नियमित आधार पर सम्मिलित हुए स्कूल का पता उसके/उनके अधिवास की स्थिति को निर्धारित करेगा।

वे अभ्यर्थी जो ऐसे राज्यों के अधिवासी हो जहां निफ्ट का कैम्पस स्थित हो उन्हें ऑनलाइन आवेदन फार्म भरते समय उसे वरीयता देने का विकल्प दिया जाएगा। यद्यपि उनके पास विकल्प होगा कि वे सामान्य/ अनुसूचित जाति/अनुसूचित जनजाति/अन्य पिछड़ी जाति वर्ग (जैसा भी लागू हो) के अनुसार मेरिट के अनुसार कोई भी कोर्स/ कैम्पस उनके पसंद का चुन सकते हैं।

अनुसूचित जाति/अनुसूचित जनजाति/अन्य पिछड़ी जाति वर्ग (गैर-संपन्न वर्ग) का आरक्षण अधिवास वाले राज्यों की सीटों पर भी लागू होगा।

### कैसे आवेदन करें: आवेदन पत्र जमा करना

अभ्यर्थी इस वेबसाइट [www.nift.ac.in](http://www.nift.ac.in) ; <http://admission-net/nift2018> पर ऑनलाइन आवेदन कर सकते हैं।

इस प्रयोजनार्थ वे ऑनलाइन आवेदन करने के लिए दिशानिर्देश को भी देख सकते हैं। विवरण-पुस्तिका निफ्ट की वेबसाइट [www.nift.ac.in](http://www.nift.ac.in) पर मुफ्त में उपलब्ध है। आवेदन की फीस का भुगतान ऑनलाइन पेमेंट गेटवे या फिर 'निफ्ट मुख्यालय' के नाम से नई दिल्ली में भुगतान किये जाने वाले बैंक डिमांड ड्राफ्ट के माध्यम से किया जाना है।

○ सामान्य/अन्य पिछड़ी जाति (गैर-क्रीमी लेयर) श्रेणी के लिए गैर-वापसी योग्य आवेदन शुल्क: 1500/- रुपये पेमेंट गेटवे या बैंक डिमांड ड्राफ्ट द्वारा दी



जाए।

- अनुसूचित जाति/अनुसूचित जनजाति/पीडब्ल्यूडी श्रेणी के लिए गैर-वापसी योग्य आवेदन शुल्क: 750/- रुपये पेमेंट गेटवे या बैंक डिमांड ड्राफ्ट द्वारा दी जाए।

### भुगतान की विधि: क्रेडिट कार्ड/डेबिट कार्ड और डिमांड ड्राफ्ट

#### (क) क्रेडिट कार्ड/डेबिट कार्ड

आवेदन शुल्क का भुगतान (1500/- रुपये या 750/- रुपये) जैसा ऊपर बताया जा चुका है, क्रेडिट कार्ड या फिर डेबिट कार्ड के जरिये किया जा सकता है। आवेदन शुल्क पर लगाने वाले बैंक और/अथवा लेन देन के शुल्क आवेदक को उठाने होंगे। अभ्यर्थियों से तय समय पर आवेदन करने की सलाह दी जाती है।

#### (ख) डिमांड ड्राफ्ट

आवेदन शुल्क का भुगतान (1500/- रुपये सामान्य/अन्य पिछड़ी जाति (नॉन-क्रीमी लेयर) के अभ्यर्थियों के मामले में और 750/- रुपये अनुसूचित जाति/अनुसूचित जनजाति/पीडब्ल्यूडी श्रेणी के मामले में) जैसा ऊपर बताया जा चुका है, बैंक डिमांड ड्राफ्ट के जरिये किया जा सकता है। डिमांड ड्राफ्ट “निफ्ट मुख्यालय”, नई दिल्ली के पक्ष में देय होना चाहिए। डिमांड ड्राफ्ट की सभी सूचनाएं ऑनलाइन आवेदन पत्र में भरी जानी चाहिए।

अभ्यर्थियों को सलाह दी जाती है कि वे डिमांड ड्राफ्ट भेजने से पहले निम्नलिखित जानकारी सावधानीपूर्वक जाँच लें।

- डिमांड ड्राफ्ट ‘निफ्ट मुख्यालय’ के नाम से बनाए।
- डिमांड ड्राफ्ट की धनराशि अर्थात् सामान्य/अन्य पिछड़ी जाति (नॉन-क्रीमी लेयर) के अभ्यर्थियों के मामले में 1500/- रुपये और अनुसूचित जाति/अनुसूचित जनजाति/पीडब्ल्यूडी श्रेणी के मामले में 750/- रुपये, जहां कहीं लागू हो, होगी।
- डिमांड ड्राफ्ट पर जारी करने वाले अधिकारी का नाम, तारीख, धनराशि और हस्ताक्षर होने चाहिए।

डिमांड ड्राफ्ट के जरिये आवेदन करने वाले अभ्यर्थी को पूरी तरह से भरा हुआ आवेदन

पत्र का प्रिंट आउट डिमांड ड्राफ्ट के साथ निम्नलिखित पते पर भेजना है:

**प्रोजेक्ट मैनेजर**  
अखिल भारतीय प्रबंधन संघ,  
मैनेजमेन्ट हाउस, 14, इंस्टिट्यूशनल एरिया,  
लोधी रोड, नई दिल्ली-110003.

पूर्ण रूप से भरा गया आवेदन-पत्र उपर्युक्त पते पर समय से पहुंच जाना चाहिए। अपूर्ण आवेदन पत्र या फिर देर से प्राप्त होने वाले आवेदन पत्रों को स्वीकार नहीं किया जायेगा। संस्थान डाक या कूरियर की वजह से देर से पहुंचने वाले आवेदन-पत्र या फार्म या पत्राचार के खो जाने की जिम्मेवारी नहीं लेता है।

अभ्यर्थियों को आगे भविष्य में संदर्भ के लिए आवेदन पत्र का प्रिंट आउट और फोटो प्रति के साथ-साथ भुगतान के सबूत की प्रति रखने की सलाह दी जाती है।

#### परीक्षा केन्द्रों के शहरों की सूची

सभी अंडरग्रेजुएट एवं पोस्टग्रेजुएट प्रोग्राम के लिए दिनांक 21 जनवरी, 2018 को 32 शहरों में पेपर आधारित परीक्षा (पीबीटी) ली जाएगी। अभ्यर्थी को 21 जनवरी, 2018 को परीक्षा के लिए एक शहर चुनना होगा। बाद में किसी स्तर पर परीक्षा केंद्र में परिवर्तन के अनुरोध पर विचार नहीं किया जाएगा।

क्रमांक सं.	शहर
1.	अहमदाबाद
2.	बेंगलुरु
3.	भोपाल
4.	भुवनेश्वर
5.	चंडीगढ़
6.	चेन्नई
7.	कोचीन
8.	कोयंबटूर
9.	देहरादून
10.	दिल्ली
11.	गुवाहाटी
12.	हैदराबाद
13.	जयपुर
14.	जम्मू
15.	जोधपुर

16.	कांगड़ा
17.	कन्नूर (केरल)
18.	कोलकाता
19.	लखनऊ
20.	मदुरई
21.	मुंबई
22.	नागपुर
23.	पटना
24.	पूना
25.	रायपुर
26.	रांची
27.	सूरत
28.	उदयपुर
29.	बड़ोदरा
30.	विशाखापट्टनम
31.	शिलांग
32.	श्रीनगर (जम्मू एवं कश्मीर)

कृपया ध्यान दें कि निफ्ट उक्त उल्लिखित परीक्षा केन्द्रों में से किसी भी केंद्र को निरस्त करने का अधिकार रखता है। ऐसी अवस्था में एक वैकल्पिक केंद्र, जो प्रशासनिक एवं उनकी अवस्थिति की दृष्टि से अनुकूल हो, आवंटित किया जायेगा।

संबंधित जानकारी के लिए अभ्यर्थी ई-मेल: [nift@applyadmission-net](mailto:nift@applyadmission-net) या [admissions@nift.ac.in](mailto:admissions@nift.ac.in) कर सकते हैं।

#### प्रवेश पत्र

निफ्ट आवेदन पत्र में दी गयी जानकारी के आधार पर, अंतरिम रूप से योग्य अभ्यर्थियों के प्रवेश पत्र 09 जनवरी, 2018 के बाद [www.nift.ac.in](http://www.nift.ac.in) या <http://admission-net/nift2018> से डाउनलोड किए जाने के लिए उपलब्ध होंगे। प्रवेश पत्र डाक द्वारा नहीं भेजे जाएंगे। अभ्यर्थियों को यह सलाह दी जाती है कि वे नवीनतम जानकारी हेतु निफ्ट की वेबसाइट को नियमित रूप से देखते रहें।

#### प्रवेश परीक्षा

सभी चयनित, योग्य अभ्यर्थियों को लिखित प्रवेश परीक्षा के लिए अपने द्वारा चुने गए परीक्षा केन्द्रों पर उपस्थित होना होगा। लिखित परीक्षा की परिकल्पना, अभ्यर्थियों द्वारा चयनित प्रोग्राम के लिए उनके ज्ञान,

कौशल व उपयुक्तता की जांच करने हेतु की गयी है।

परीक्षा केंद्र में प्रवेश केवल प्रवेश पत्र के साथ ही अनुमति दी जाएगी। मोबाइल व अन्य तकनीकी उपकरणों को परीक्षा केंद्रों के कैम्पस के अंदर ले जाने की अनुमति नहीं है। जिस किसी अभ्यर्थी के पास मोबाइल या कोई अन्य सूचना उपकरण पाया गया तो उसे परीक्षा छोड़कर जाने के लिये कहा जायेगा और उसे अयोग्य करार कर दिया जायेगा।

अभ्यर्थी को परीक्षा शुरू होने से 30 मिनट पहले परीक्षा केंद्र पहुंच जाना चाहिए।

#### लिखित परीक्षा की सारणी

परीक्षा की तिथि: 21 जनवरी, 2018: सभी अंडरग्रेजुएट एवं पोस्टग्रेजुएट पाठ्यक्रमों हेतु

प्रोग्राम	परीक्षा	परीक्षा का समय
बैचलर ऑफ डिजाइन	सीएटी	10.00 से 01.00 बजे तक
	जीएटी	02.30 से 04.30 बजे तक
मास्टर ऑफ डिजाइन	सीएटी	10.00 से 01.00 बजे तक
	जीएटी	02.30 से 04.30 बजे तक
बैचलर ऑफ फैशन टेक्नालॉजी	जीएटी	10.00 से 01.00 बजे तक
मास्टर ऑफ फैशन टेक्नालॉजी	जीएटी	10.00 से 01.00 बजे तक
मास्टर ऑफ फैशन मैनेजमेंट	जीएटी	10.00 से 01.00 बजे तक

#### लिखित परीक्षा के परिणाम निफ्ट की वेबसाइट पर दिखेंगे।

जीएटी एवं सीएटी के लिखित परीक्षा के परिणाम के आधार पर छांटे गए बी-डैस के अभ्यर्थियों को दूसरी परीक्षा, जिसे पारिस्थितिक परीक्षा (सिचुएशन टेस्ट) कहते हैं, के लिए बुलाया जाएगा। बीएफटेक अभ्यर्थियों के लिए जीएटी चयन हेतु अंतिम परीक्षा होगी। एमडैस के अभ्यर्थी को जीएटी एवं सीएटी देना होगा। जीएटी एवं सीएटी के परिणामों के आधार पर एमडैस के मामले

में और एमएफटेक एवं एमएफएम के मामले में जीएटी वाले अभ्यर्थियों को समूह चर्चा/ निजी साक्षात्कार (जीडी/पीआई) हेतु बुलाया जाएगा।

परीक्षा के लिए आवेदन करने वाले अभ्यर्थियों को सुनिश्चित करना होगा कि वे प्रवेश की पात्रता को पूरा करते हैं। परीक्षा के प्रत्येक स्तर पर उनका प्रवेश की पात्रता अर्थात् लिखित परीक्षा, सिचुएशन टेस्ट, समूह चर्चा एवं साक्षात्कार (जैसा भी मामला हो) अनंतिम ही रहेगा जब तक कि वे इसके लिए निर्धारित पात्रता पूरी नहीं कर लेते। लिखित परीक्षा से पहले या बाद में किसी समय सत्यापन के दौरान यदि यह सिचुएशन टेस्ट, समूह चर्चा एवं साक्षात्कार (जैसा भी मामला हो) पाया जाता है कि अभ्यर्थी पात्रता की शर्तें पूरी नहीं करता है तो उसे बिना और कोई सूचना दिए उनका/ उनकी परीक्षा संबंधी उम्मीदवारी रद्द कर दी जायेगी। निफ्ट इस प्रकार के निरस्तीकरण के कारण होने वाले किन्हीं भी परिणामों के लिए उत्तरदायी नहीं होगा।

लिखित प्रवेश परीक्षा के प्रत्येक अंतिम मेरिट सूची में दिए गए वेटेज निम्नानुसार होंगे।

प्रोग्राम	परीक्षा	वेटेज
बैचलर ऑफ डिजाइन	सीएटी	50 %
	जीएटी	30 %
	सिच्युएशन टेस्ट	20 %
मास्टर ऑफ डिजाइन	सीएटी	40 %
	जीएटी	30 %
	जीडी/पीआई	30 %
बैचलर ऑफ फैशन टेक्नालॉजी	जीएटी	100 %
	जीडी/पीआई	30 %
मास्टर ऑफ फैशन टेक्नालॉजी	जीएटी	70 %
	जीडी/पीआई	30 %
मास्टर ऑफ फैशन मैनेजमेंट	जीएटी	70 %
	जीडी/पीआई	30 %

ऐसे मामलों में जहां प्राप्तांक समान हों, वहां जन्मतिथि के अनुसार अधिक उम्र के अभ्यर्थी को वरीयता दी जाएगी।

### प्रवेश परीक्षा के अवयवों का विवरण

बैचलर ऑफ डिजाइन (बी. डैस) और मास्टर

ऑफ डिजाइन (एम.डैस) के लिए सामान्य प्रतिभा परीक्षा (जनरल एबिलिटी टेस्ट (गैट)): इस परीक्षा में निम्नलिखित खण्डों पर आधारीत प्रश्न होंगे:

1. आंकिक दक्षता
2. संप्रेषण दक्षता
3. अंग्रेजी बोध
4. विश्लेषात्मक दक्षता
5. सामान्य ज्ञान और नवीनतम घटनाक्रम

प्रत्येक खंड में प्रश्नों की संख्या साल दर साल बदल सकती है।

### परीक्षा संरचना

प्रोग्राम	बैचलर ऑफ डिजाइन	मास्टर ऑफ डिजाइन
प्रश्न पत्र का नाम	जीएटी	जीएटी
लिखित परीक्षा की भाषा	अंग्रेजी	अंग्रेजी
परीक्षा की अवधि (मिनट)	120	120
खंड	प्रश्नों की संख्या	प्रश्नों की संख्या
आंकिक दक्षता	20	20
संवाद दक्षता	25	30
अंग्रेजी बोध	25	30
विश्लेषात्मक दक्षता	15	25
सामान्य ज्ञान और नवीनतम घटनाक्रम	15	15
कुल	100	120

1) आंकिक दक्षता: यह उप-परीक्षा अभ्यर्थी के आंकिक (परिमाणात्मक) दक्षता की जांच के लिए तैयार किया गया है। इस उप-परीक्षा में जोड़, गुणा, भाग, अंश, प्रतिशत, ब्याज दर, कार्य और परिश्रम, अनुपात और समानुपात और दूरी आदि के सवाल होते हैं।

2) कम्प्यूटेशन दक्षता: इस उप-परीक्षा का उद्देश्य अभ्यर्थी की रोजमर्रा की जिन्दगी में अंग्रेजी भाषा के प्रयोग के लिए भाषा की दक्षता का परीक्षण करना है। इसमें प्रश्न पर्यायवाची शब्द, विपरीतार्थक शब्द,

समतुल्य अर्थ वाले शब्द, एकवचन, बहुवचन, वाक्यांश के लिए एक शब्द, मुहावरे व कहावतें, शुद्ध वर्तनी आदि पर पूछे जाएंगे।

3) अंग्रेजी भाषा का बोध: इस उप-परीक्षा का उद्देश्य अभ्यर्थी को दिए गए गद्यांश से किसी परिस्थिति को समझने की क्षमता का परीक्षण करना है व उसकी बुनियादी अंग्रेजी भाषा का परीक्षण है।

4) विश्लेषणात्मक दक्षता: इस उप-परीक्षा का उद्देश्य अभ्यर्थी की दी गयी जानकारी से निष्कर्ष निकालना व उसकी तर्क शक्ति का परीक्षण करना है।

5) सामान्य ज्ञान व वर्तमान घटनाक्रम: इस उप-परीक्षा को इस प्रकार तैयार किया गया है जिससे कि अभ्यर्थी के सामान्य ज्ञान और वर्तमान घटनाक्रम के विषय में ज्ञान का परीक्षण किया जा सके।

### रचनात्मक दक्षता परीक्षा (सीएटी-कैट)

यह परीक्षा आंतरिक काल्पनिक निपुणता, ध्यान देने की शक्ति, किसी विचार एवं डिजाइन को नए तरीके से विकसित करने की सृजनात्मकता की परीक्षा करना होता है। इस परीक्षा का एक महत्वपूर्ण पहलु है सृजनात्मक एवं नवीन प्रकार से रंग एवं व्याख्या की निपुणता।

### सामान्य दक्षता परीक्षा (जीएटी-गैट)

बैचलर ऑफ टेक्नालॉजी (बीएफटेक), मास्टर ऑफ फैशन मैनेजमेंट (एमएफएम), मास्टर ऑफ डिजाइन (एमडैस) एवं मास्टर ऑफ फैशन टेक्नालॉजी (एमएफटेक)

इस परीक्षा के विभिन्न भाग होंगे जो निम्नवत हैं:

1. आंकिक दक्षता
2. संप्रेषण की क्षमता एवं अंग्रेजी बोध
3. विश्लेषणात्मक एवं तार्किक दक्षता
4. सामान्य ज्ञान एवं साम-सामयिक मामले
5. केस स्टडी

### परीक्षा का ढांचा

पाठ्यक्रम	बीएफटेक	एमएफटेक	एमएफएम
पेपर का नाम	जीएटी	जीएटी	जीएटी
लिखित परीक्षा की भाषा	अंग्रेजी	अंग्रेजी	अंग्रेजी
परीक्षा की अवधि (मिनट)	180	180	180
खंड	प्रश्नों की संख्या	प्रश्नों की संख्या	प्रश्नों की संख्या
परिमाणात्मक दक्षता	30	30	10
संप्रेषण दक्षता और अंग्रेजी बोध	45	45	50
विश्लेषात्मक एवं तार्किक दक्षता	25	25	25
सामान्य ज्ञान और नवीनतम घटनाक्रम	25	25	25
केस स्टडी	25	25	40
कुल	150	150	150

1) आंकिक दक्षता: इस उप-परीक्षा का निर्धारण अभ्यर्थी की आंकिक दक्षता को जांचने के लिए किया जाता है। इस उप-परीक्षा के अंतर्गत प्रश्न जोड़, गुणा, भाग समानुपात, प्रतिशत, ब्याज दर काम, समय चाल, अनुपात एवं हिस्से तथा दूरी से संबंधित प्रश्न होते हैं।

2) संप्रेषण की क्षमता एवं अंग्रेजी समझ: इस उप-परीक्षा का उद्देश्य अभ्यर्थी की अंग्रेजी भाषा की रोजमर्रा (दैनंदिन) की अंग्रेजी संप्रेषण का पता लगाना है। इसके अंतर्गत प्रश्नों में अंग्रेजी समानार्थी, विपरीतार्थी, शब्दों और उनके अर्थ, एकवचन, बहुवचन एक शब्द के विकल्प, समास एवं मुहावरों, सही मात्रा, एक पैराग्राफ में दिए हुए परिस्थिति को समझना इत्यादि।



3) विश्लेषणात्मक एवं तार्किक योग्यता: इस उक्त विषय को अभ्यर्थी की अनुमान लगाने तथा दी हुई जानकारी के आधार पर तार्किक क्षमता का पता लगाने के लिए अभ्यर्थी को दी गई किसी विशेष समीक्षा में तर्क अथवा कारण का पता लगाकर उसे उस समस्या के समाधान का पता लगाना है। अवधारणा एवं रचनात्मक पार्श्व सोच के उपयोगी होने की संभावना है।

4) सामान्य ज्ञान एवं सम-सामयिक मामले: इस उप-परीक्षा का प्रयोग अभ्यर्थी के सामान्य ज्ञान एवं सम-सामयिक मामलों उनके ज्ञान को परखने के लिए किया गया है।

5) केस स्टडी: इस उक्त परीक्षा में औद्योगिक वातावरण से संबंधित परिस्थितियों के प्रश्न होते हैं ये अभ्यर्थियों की प्रबंधकीय क्षमता के मूल्यांकन में सहायक होते हैं।

एमएफटेक में कुछ प्रश्न इंजीनियरिंग क्षेत्र के भी होंगे।

प्रत्येक खंडों में प्रश्नों की संख्या अलग-अलग हो सकती है और प्रत्येक कोर्स के लिए प्रश्नों की संख्या में वर्ष-वार बदलाव हो सकता है। प्रत्येक खंडों में प्रश्नों की जटिलता में प्रत्येक कोर्स में अंतर हो सकता है। लिखित परीक्षा में चयनित सूचीबद्ध परीक्षार्थियों को सिचुएशन टेस्ट/समूह चर्चा/साक्षात्कार जैसा भी मामला हो में बैठना होगा (केवल बीएफटेक को छोड़कर)।

### पारिस्थितिक (सिचुएशन) परीक्षा

लिखित प्रवेश परीक्षा से बी. डिजाइन के लिए चुने गए अभ्यर्थी को पारिस्थितिक परीक्षा से गुजरना होता है। इस परीक्षा से अभ्यर्थी के किसी परिस्थिति में दिए गए वस्तुओं के उपयोग और नया करने की क्षमता का पता लगाया जाता है।

कोई भी अतिरिक्त वस्तु उपलब्ध या उपयोग करने की अनुमति नहीं दी जायेगी।

इस परीक्षा के दौरान बनाये गए मॉडल का आंकलन जगह की परिकल्पना, नयापन और दी गई सामग्रियों के कलात्मक उपयोग, मूल तत्वों की संरचना, रंगों का प्रयोग, निर्माण कला, मॉडल की कार्यकुशलता और प्रस्तुतिकरण आदि के आधार पर किया जायेगा। इन बिंदुओं की जांच मॉडल के निर्माण की सोच और अवधारणा के लिखित समग्र जवाब के आधार पर किया जायेगा। चूंकि निफ्ट में शिक्षा अंग्रेजी में दी जाती है इसलिए जवाब अंग्रेजी भाषा में ही

लिखा जाना है। किसी अन्य भाषा में लिखी सामग्री के लिए नंबर नहीं दिए जायेंगे।

मॉडल/डिजाइन बनाने के लिए बाहरी/अतिरिक्त सामग्री के प्रयोग की अनुमति नहीं होगी। यह भी कि यदि उम्मीदवार जो उनकी पहचान नाम या अन्य कोई निजी विवरण लिखकर अथवा कोई पहचान चिह्न मॉडल/डिजाइन/आलेख पर छोड़ेंगे, उन्हें अयोग्य घोषित कर लिया जाएगा और ऐसे उम्मीदवारों का अंतिम परिणाम नहीं घोषित किया जाएगा।

ऐसे परीक्षा का मूल्यांकन परीक्षा स्थल पर ही तत्काल जूरी द्वारा किया जाएगा। इन मॉडलों को भविष्य के संदर्भ हेतु नहीं बचाकर रखा जाएगा।

### सामूहिक चर्चा

मास्टर प्रोग्राम के लिए लिखित परीक्षा में से चुने गए अभ्यर्थियों को किसी भी केस स्टडी पर आधारित ग्रुप डिस्कशन (जीडी) और व्यक्तिगत साक्षात्कार (पीआई) में भाग लेना होगा। ग्रुप डिस्कशन लगभग 15 से 20 मिनट का होगा और यह दी गई केस स्टडी पर आधारित होगा, जिसमें विशेषज्ञ अभ्यर्थियों को निम्नलिखित बिंदुओं पर परखेंगे।

- 1) वैचारिक स्पष्टता
- 2) दिए गए विषय की जानकारी
- 3) विषय के प्रति उनके योगदान
- 4) अंतर वैयक्तिक कौशल
- 5) नए विचार उत्पन्न करने की क्षमता
- 6) मुश्किलों को सुलझाने की क्षमता
- 7) नेतृत्व के गुण
- 8) प्रभावशाली कम्यूनिकेशन (संप्रेषण)

### व्यक्तिगत साक्षात्कार

एक अभ्यर्थी को व्यक्तिगत साक्षात्कार में निम्नलिखित बिंदुओं के आधार पर आंका जाता है।

- 1) पेशे के प्रति अनुकूलता
- 2) विषय के प्रति जागरूकता
- 3) शिक्षा और पाठ्येत्तर कार्यकलापों में समग्र व्यक्तिगत उपलब्धियां
- 4) संप्रेषण
- 5) सामान्य जानकारी और जिज्ञासा, रचनात्मक और स्पष्ट सोचा

क्योंकि उपरोक्त के लिए कोई अलग प्रशिक्षण की आवश्यकता नहीं है अतः निफ्ट किसी भी तरह कोचिंग कक्षाओं की सिफारिश नहीं करता है।

### काउंसलिंग

काउंसलिंग की सूचनाएं जैसे की विधि, तारीख, तकनीक आदि मई या जून, 2018 में वेबसाइट पर उपलब्ध हो जाएंगी। अभ्यर्थियों को अधिक जानकारी के लिए वेबसाइट को नियमित आधार पर देखते रहने की सलाह दी जाती है।

लिखित परीक्षा पास करने के उपरांत निम्नलिखित कागजात उनकी फोटो प्रति सहित प्रवेश के लिए आवश्यक होंगी। चिकित्सीय प्रमाण-पत्र को छोड़कर सभी मूल प्रमाण-पत्र सत्यापन के उपरांत अभ्यर्थी को वापस कर दिए जायेंगे।

(i) अर्हक परीक्षा के मूल प्रमाण-पत्र अर्थात् 12वीं कक्षा/डिग्री (अंक तालिका/प्रमाण पत्र)

यदि प्रवेश पोस्टग्रेजुएट पाठ्यक्रम के लिए है तो अभ्यर्थी को मूल प्रमाण-पत्र (अंक तालिका/प्रमाण पत्र) अर्हक बैचलर परीक्षा के लाने होंगे। यदि अभ्यर्थी अंतिम सेमेस्टर की परीक्षा में/अंतिम वर्ष की परीक्षा में, जैसा भी मामला हो, सम्मिलित हुआ है तो उसे पिछले सभी सेमेस्टर्स/वर्षों के मूल अंक तालिका लानी होगी।

(ii) यदि अभ्यर्थी अर्हक परीक्षाधूरक परीक्षा (अंतिम/सेमेस्टर की) में सम्मिलित हुआ है और परिणाम अभी आना शेष है तो ऐसी स्थिति में ऐसी परीक्षा में सम्मिलित होने संबंधी प्रवेश पत्र/डेट सीट को प्रमाण स्वरूप लाना होगा।

(iii) अपेक्षित फीस का बैंक ड्राफ्ट “निफ्ट मुख्यालय” के पक्ष में हो। अभ्यर्थी का नाम, काउंसलिंग की तिथि, फोन एवं मोबाइल नं., पाठ्यक्रम का नाम, श्रेणी, रैंक एवं रोल नं. को इन बैंक ड्राफ्ट के पीछे लिखा जाना चाहिए।

(iv) जन्म तिथि का प्रमाण (माध्यमिक विद्यालय अंक पत्र एवं प्रमाण-पत्र) (मूल एवं फोटो प्रति)।

(v) अनुसूचित जाति/जनजाति/अन्य पिछड़ी जाति-गैर संपन्न वर्ग/विकलांग (अपेक्षित प्रमाणपत्र के साथ)। राज्य अधिवासी सीटों के लिए निवास के स्थान का निर्णय आखिरी बार भाग लिए हुए स्कूल/कॉलेज (अर्हक डिग्री) जिसमें वह अंतिम वर्ष में शामिल हो द्वारा निर्णय लिया जाएगा, जो भी लागू हो।

(vi) फीस देने से संबंधित अभिभावक के आर्थिक स्रोत का प्रमाण जैसे 2017-2018 का आयकर रिटर्न या मार्च 2018 का वेतन

प्रमाण-पत्र आदि।

(vii) चिकित्सक स्वास्थ्य प्रमाण-पत्र पर हस्ताक्षर निर्धारित प्रपत्र में मूल रूप से पंजीकृत चिकित्सीय द्वारा किया जाना चाहिए।

(viii) 10 रुपये के गैर न्यायिक स्टाम्प पेपर पर केवल अस्थायी प्रवेश के लिए शपथ-पत्र, उस दशा में जब अहर्ता परीक्षा का परिणाम नहीं आया हो। ( अनुबंध-1 में दर्शाए गए प्रारूप में)

(ix) एंटी-रैगिंग के संबंध में एक वचन पत्र (अंडरटेकिंग) (अनुबंध-2)।

(x) फीस वापसी के संबंध में एक वचन पत्र (अनुबंध-3)।

नोट: अगर उपरोक्त में से कोई भी कागजात हिंदी/अंग्रेजी के अतिरिक्त किसी और भाषा में है तो उसका मौलिक अनुवाद अंग्रेजी/हिंदी में जारी कर्ता अधिकारी या किसी राजपत्रित अधिकारी द्वारा प्रमाणित (मूल एवं छायाप्रति) अभ्यर्थी द्वारा काउंसलिंग/दाखिले के समय प्रस्तुत किया जाना चाहिए। ऐसा नहीं कर पाने की स्थिति में प्रवेश देने से मना किया जा सकता है।

### प्रवेश का रद्द होना

(i) सिर्फ प्रवेश परीक्षा में उत्तीर्ण होने से किसी भी अभ्यर्थी को प्रोग्राम में दाखिला का हकदार नहीं बना देता है।

(ii) अगर निफ्ट अभ्यर्थी के चरित्र, पहले के व्यवहार या पिछले कार्यकलाप से संतुष्ट नहीं है तो उस अभ्यर्थी को किसी भी कैम्पस के किसी भी कोर्स में प्रवेश देने से मना कर सकता है या अंतिम चरण में उसका दाखिला रद्द कर सकता है।

(iii) अगर किसी भी स्तर पर यह पता चलता है कि अभ्यर्थी ने किसी कैम्पस/प्रोग्राम में गलत या झूठी जानकारी या किसी तथ्य को छुपाया है या उसे किसी गलती या किसी तथ्य के नजरंदाज किये जाने की वजह से प्रवेश मिल गया है तो उसका दाखिला निफ्ट-महानिदेशक द्वारा बगैर किसी नोटिस के रद्द कर दिया जायेगा और जमा फीस जब्त कर ली जाएगी।

(iv) अगर कोई अभ्यर्थी आवंटित/पुनः आवंटित निफ्ट कैम्पस को सत्र शुरू होने के सात दिन के अंदर रिपोर्ट नहीं करता है तो उसका प्रवेश रद्द कर दिया जायेगा और उसकी फीस जब्त कर ली जाएगी।

(v) महानिदेशक किसी भी अभ्यर्थी का दाखिला किसी खास वजह से रद्द कर सकते हैं और उसे किसी खास अवधि के लिए बाहर कर सकते हैं।

(vi) यह अभ्यर्थी की जिम्मेवारी है कि वह यह सुनिश्चित करें कि वह प्रवेश के लिये आवश्यक योग्यता और शर्तें पूरा करते हैं। सीट के आवंटन के समय प्रवेश की रसीद जारी होने से पहले अभ्यर्थी को यह सुनिश्चित कर लेना चाहिए कि वे प्रवेश पुस्तिका में वर्णित सभी पात्रता की शर्तें पूरा करते हैं। प्रोग्राम की समग्र अवधि के किसी भी स्तर/समय पर यह पता चलने पर कि वह अपेक्षित पात्रता संबंधी शर्तों को पूरा नहीं करता है तो उसका प्रवेश रद्द कर दिया जायेगा और उसकी फीस जब्त कर ली जाएगी।

(vii) मेरिट सिर्फ उस प्रोग्राम/श्रेणी के लिए मानी जायेगी जिसके लिए अभ्यर्थी ने आवेदन किया है, इसका उपयोग किसी अन्य प्रोग्राम/श्रेणी के लिए नहीं किया जा सकता है। इसके अतिरिक्त, अभ्यर्थी की मेरिट सिर्फ 2018-19 के शैक्षणिक सत्र के लिए मान्य है।

नोट: सारे प्रवेश महानिदेशक द्वारा तय आखरी तारीख तक पूरे किये जाने हैं।

### रैगिंग के खिलाफ

शैक्षणिक संस्थाओं में रैगिंग पूरी तरह प्रतिबंधित है और रैगिंग में संलिप्त किसी भी अभ्यर्थी को उचित सजा दी जायेगी, जिसमें संस्थान से निकाला जाना, कुछ समय के लिए संस्थान या क्लास से निलंबित किया जाना या सार्वजनिक माफी के साथ अर्थदंड शामिल है। सजा अन्य ढंग से जैसे

1. फीस में मिलने वाली छूट या छात्रवृत्ति या अन्य कोई लाभ, 2. प्रोग्राम प्रतिभागिता से प्रतिबंध 3. परिणाम पर रोक 4. होस्टल या मेस से निलंबन या बाहर निकाल देना और इस तरह की सजा शामिल है। अगर रैगिंग में संलिप्त व्यक्ति की पहचान नहीं हो पाती है तो सजा सामूहिक रूप से भी दी जा सकती है ताकि इससे भविष्य की ऐसी घटनाओं पर रोक लग सके।

### निम्नलिखित घटनाओं को रैगिंग कहा जायेगा-

कोई भी बेहतर कार्य चाहे वह भाषा के जरिये हो या लिखित या किसी कार्य के जरिये जो अन्य अभ्यर्थी (यों) को चिढ़ाने या कठोरतापूर्वक पेश आने, किसी गुंडागर्दी,

अनुशासनहीन व्यवहार जिससे नए अभ्यर्थी या कनिष्ठ अभ्यर्थी में छेड़छाड़ या तकलीफ या मानसिक परेशानी या भय पैदा हो या फिर इन अभ्यर्थी (यों) से वह सब काम करने को कहना जो वे सामान्य दशा में नहीं करना चाहेंगे जिससे नए अभ्यर्थी (यों) में या कनिष्ठ अभ्यर्थी (यों) में शर्म या शर्म का भाव पैदा हो जिससे उन्हें शारीरिक नुकसान या मानसिक नुकसान हो। इस सम्बन्ध में सरकार द्वारा रैगिंग के खिलाफ बनाए गए नियम/कानून लागू होंगे (अनुबंध-2)।

याद रखने वाले बिंदु:

- निफ्ट किसी भी कोचिंग क्लास की सिफारिश या समर्थन नहीं करता है।
- निफ्ट किसी भी कैम्पस में किसी भी प्रोग्राम को जोड़ने या हटाने का अधिकार रखता है।
- दाखिला की कार्यवाही में किसी भी तरह से सिफारिश लाने या प्रभावित करने की स्थिति में आवेदक को तुरंत अयोग्य करार दिया जायेगा।
- गैट या कैंट की परीक्षा की पुनः जांच करने से संबंधित अनुरोध निम्नलिखित की जांच के लिए प्रतिबंधित किया जाएगा:
- क्या सभी उत्तर का मूल्यांकन किया गया है
- क्या अंकों का कुल करने में गलती हुई है
- प्रवेश-पत्र की स्कैन की हुई प्रति के बिना भेजा गया अनुरोध का जबाव नहीं दिया जाएगा।

नोट: दाखिला संबंधी पूरी कार्यवाही की जानकारी निफ्ट की वेबसाइट पर उपलब्ध होगी। यह माना जाता है कि निफ्ट में आवेदन कर रहे अभ्यर्थी ने योग्यता और दाखिला संबंधी कार्यवाही की जानकारी प्राप्त कर ली है। इस संबंध में अभ्यर्थी के पार्ट पर किसी भी अज्ञानता के लिए निफ्ट जवाबदेह नहीं है।

### शैक्षिक ऋण

निफ्ट ने यूनिजन बैंक ऑफ इंडिया (यूबीआई) के साथ मिलकर 11.75% की विशेष ब्याज दर से अभ्यर्थी को शैक्षिक ऋण उपलब्ध कराने के लिए समझौता ज्ञापन पर हस्ताक्षर किया है। अनुसूचित जाति/ जनजाति श्रेणी में आने वाले अभ्यर्थियों के लिए यह ब्याज दर 11.25% है। महिला अभ्यर्थियों के लिए भी यह ब्याज दर 11.25% है। यूनिजन बैंक ऑफ इंडिया ने उन सभी अभ्यर्थियों को जो निफ्ट में प्रवेश प्राप्त करते हैं, पहले से ही स्वीकृत ऋण पत्र जारी किए हैं। पहले

से ही मंजूर स्वीकृति ऋण पत्र अनुबंध-V में दिया गया है। अभ्यर्थी परिणाम घोषित होने के बाद इस पत्र व प्रवेश परीक्षा उत्तीर्ण कर लेने के प्रमाण के साथ, पूरे देश में किसी भी यूनिजन बैंक ऑफ इंडिया की शाखा पर जाकर इस सुविधा का लाभ उठा सकते हैं।

### निफ्ट की मेरिट वित्तीय सहायता योजना

निफ्ट प्रतिभाशाली छात्रों को सीमित आर्थिक सहायता (सब्सिडी) की पेशकश करता है जिन्हें साधन एवं मेरिट वित्तीय सहायता योजना में दिए गए प्रावधानों के अंतर्गत वित्तीय सहायता की आवश्यकता है। इस योजना के अंतर्गत वित्तीय सहायता की उपलब्धता की सभी के लिए कोई गारंटी नहीं है।

इस सहूलियत का लाभ उठाने के इच्छुक अभ्यर्थियों को अपने माता-पिता की आय के सर्टिफिकेट के साथ अपना आवेदन पत्र जमा करवा देना चाहिए व एडमिशन के पश्चात अपने कैम्पस के छात्र विकास कार्यकलाप संयोजक (स्टूडेंट डेवेलपमेंट एक्टिविटी को-ऑर्डिनेटर-एसडीएसी) से संपर्क करना चाहिए।

निफ्ट कैम्पस में छात्र सहायता प्रोग्राम के जरिये भी सहायता प्रदान करता है जिसके तहत उन्हें संस्थान के भीतर ही अंशकालिक रोजगार दिया जाता है।

प्रवेश के बाद प्रवेश से निकासी और फीस की वापसी:

(i) कोई भी अभ्यर्थी जो एक बार प्रवेश ले लेने के बाद उसे वापस लेता है, उसे बाद में प्रवेश नहीं दिया जाएगा।

(ii) अभ्यर्थी यदि शैक्षणिक सत्र शुरू होने से पहले फीस की वापसी एवं प्रवेश से नाम वापसी का अनुरोध करता है तो ऐसा उसे इसके लिए निर्धारित प्रपत्र (अनुबंध-3) में विधिवत भरकर उस कैम्पस के निदेशक को दिया जाना चाहिए जहां वह काउंसलिंग में सम्मिलित हुआ/हुई। शैक्षणिक सत्र आरंभ होने के बाद, पैसे वापसी का अनुरोध उस कैम्पस के निदेशक के पास जमा किया जाना चाहिए जो उसे आबंटित किया गया है। अभ्यर्थी से यह अपेक्षा की जाती है कि वह वापसी के अनुरोध के साथ मूल रूप से प्रवेश की रसीद जो उसे प्रवेश के समय दी गई हो उसे लौटानी होगी। प्रवेश वापसी के उस अनुरोध पर विचार नहीं किया जाएगा जिसके साथ मूल रूप से प्रवेश की रसीद संलग्न नहीं होगी।

(iii) प्रवेश सीट से वापसी पर धन की वापसी निम्नलिखित तरीकों से होगी:

क्रम संख्या	समय	वापस की गई धनराशि	अनिवासी भारतीय/ सार्क/विदेशी नागरिक अभ्यर्थी
1	17 जुलाई, 2018 को या उससे पहले	पंजीकरण फीस को छोड़कर पूरी फीस	50% ट्यूशन फीस और पंजीकरण फीस के अलावा पूरी फीस
2	17 जुलाई, 2018 के पश्चात लेकिन अं. ति.म.दौर की काउंसलिंग शुरू होने की तिथि से पहले	50% ट्यूशन फीस और पंजीकरण फीस के अलावा पूरी फीस	
3	अंतिम दौर की काउंसलिंग शुरू होने की तिथि को या उसके पश्चात*	केवल सुरक्षा जमा	

\* काउंसलिंग के आखिरी दौर के शुरू होने की तारीख का प्रकाशन निफ्ट की वेबसाइट पर किया जाएगा।

नोट: अंतिम चरण में किसी भी अभ्यावेदन पर संस्थान द्वारा विचार नहीं किया जाएगा। इस संबंध में किसी भी स्थिति में कोई पत्र व्यवहार नहीं किया जाएगा।

\*\*\*\*\*



## ACADEMIC FEE STRUCTURE

FEE Structure (for new students admitted during the year 2018-19)

	2018-19		2019-20		2020-21		2021-2022	
	Sem 1	Sem 2	Sem 3	Sem 4	Sem 5	Sem 6	Sem 7	Sem 8
Tuition fee (non refundable)	97800	97800	107600	107600	118350	118350	130200	130200
Library fee (per year) (non refundable)	6400	0	7100	0	7800	0	8600	0
Mediclaime & student development fee (per year) (non refundable)	3200	0	3500	0	3900	0	4300	0
Exam fee (per year)	3200	0	3500	0	3900	0	4300	0
<b>Total</b>	<b>110600</b>	<b>97800</b>	<b>121700</b>	<b>107600</b>	<b>133950</b>	<b>118350</b>	<b>147400</b>	<b>130200</b>
One time payments								
Security deposit (one time) (refundable)	8200	0	0	0	0	0	0	0
Alumni association membership fee (one time) (non refundable)*	0	0	0	0	0	0	4000	0
Registration fee (one time)	8100	0	0	0	0	0	0	0
<b>Total</b>	<b>16300</b>	<b>0</b>	<b>0</b>	<b>0</b>	<b>0</b>	<b>0</b>	<b>4000</b>	<b>0</b>
<b>Total</b>	<b>126900</b>	<b>97800</b>	<b>121700</b>	<b>107600</b>	<b>133950</b>	<b>118350</b>	<b>151400</b>	<b>130200</b>

**Note:**

1. NIFT reserves the right to revise the above mentioned fees for any academic year.
2. For students admitted to two year masters course, the fee has to be paid only for two years i.e 2018-19 & 2019-20.
- \* For PG Students, it will be in 3rd Semester
3. One time payments for NRI Candidates have been kept at par with the Non-NRI Candidates.

<b>Academic Fee Annually for NRI (Per year - consisting of two semesters)</b>				
<b>(In Rupees)</b>				
<b>Hike given @ 5% in first &amp; second year and for third &amp; fourth year fees has been kept at par with the students of the academic batch 2017-18.</b>				
	2018-19	2019-20	2020-21	2021-2022
Tuition fee (non refundable)	678300	712200	781700	859800
Library fee (per year) (non refundable)	39200	41100	45100	49600
Mediclaime & student development fee (per year) (non refundable)	25100	26300	28900	31800
Exam fee (per year)	2900	3100	3400	3700
<b>Total</b>	<b>745500</b>	<b>782700</b>	<b>859100</b>	<b>944900</b>
One time payments				
Security deposit (one time) (refundable)	8200	0	0	0
Alumni association membership fee (one time) (non refundable)*	0	0	0	4000
Registration fee (one time)	8100	0	0	0
<b>Total</b>	<b>16300</b>	<b>0</b>	<b>0</b>	<b>4000</b>
<b>Total</b>	<b>761800</b>	<b>782700</b>	<b>859100</b>	<b>948900</b>

**Note:**

1. NIFT reserves the right to revise the above mentioned fees for any academic year.
2. For students admitted to two year masters course, the fee has to be paid only for two years i.e 2018-19 & 2019-20.
- \* For PG Students, it will be in 3rd Semester
3. One time payments for NRI Candidates have been kept at par with the Non-NRI Candidates.

## **NIFT CAMPUSES**

### **BENGALURU**

NIFT Campus,  
No. 21st, 16th Cross Street  
27th Main Road, Sector I  
HSR (Hosur Sarjapura Road) Layout,  
Bengaluru – 560 102 (Karnataka)  
T: (080) 22552550 to 55  
F: (080) 22552566

### **BHOPAL**

NIFT Campus,  
M P Bhoj (Open) University Campus,  
Kolar Road,  
Bhopal- 462016 (MP)  
T: (0755) 2493636/736  
F: (0755) 2493635

### **BHUBANESWAR**

NIFT Campus,  
IDCO Plot No-24  
Opp. KIIT School of Mgmt.  
Chandaka Industrial Estate,  
Bhubaneswar – 751024, Odisha  
T: (0674) 2305700, 2305701  
F: 0674-2305710

### **CHENNAI**

NIFT Campus,  
Rajiv Gandhi Salai, Taramani,  
Chennai – 600 113, Tamil Nadu  
T: (044) 22542759 F: (044) 22542769

### **GANDHINAGAR**

NIFT Campus  
GH - O Road, Behind Info City,  
Near DAIICT  
Gandhinagar-382007, Gujarat  
T: (079) 23265000, 23240832, 23240834  
F: (079) 23240772

### **HYDERABAD**

NIFT Campus,  
Opposite Hi-tech City,  
Cyberabad Post,  
Madhapur, Hyderabad-500 081  
Telangana  
T: (040) 23110841/42/43, 23110630.  
F (040) 23114536

### **JODHPUR**

NIFT Campus,  
Karwar  
Jodhpur - 342 037, Rajasthan, India  
T: (0291)- 2659558, 2659556  
F: (0291) 2659556

### **KANGRA**

NIFT Campus  
Chheb, Kangra-176001 (HP)  
T: (01892) 263872  
F: (01892) 260872

## **NIFT CAMPUSES**

### **KANNUR**

NIFT Campus,  
Dharmasala, Mangattuparamba,  
Kannur - 670 562 (Kerala)  
T: (0497) 2784780-84 & 2784786  
F: (0497) 2784785

### **KOLKATA**

NIFT Campus,  
Plot No. 3B, Block - LA,  
SEC-III, SALT LAKE CITY,  
Kolkata-700098 (WB)  
T: (033) 23358351, 23358872, 23357332  
F: (033) 23358351, 23355734

### **MUMBAI**

NIFT Campus.  
Plot no 15, Sector 4, Kharghar,  
Navi Mumbai - 410210  
Maharashtra  
T: (022) 27745549, 27747000,  
27747100  
F: (022) 27745386

### **NEW DELHI**

NIFT Campus  
Hauz Khas,  
Near Gulmohar Park  
New Delhi - 110016  
T: (011) 26867704, 26542148/49/59  
F: (011) 26542151

For detailed information on how to reach our campuses, please log into [www.nift.ac.in](http://www.nift.ac.in)

### **PATNA**

NIFT Campus,  
Mithapur Farms,  
Patna -800001 (Bihar)  
T: (0612) 2340032, 2366833/4  
F: (0612) 2366835

### **RAEBARELI**

NIFT Campus,  
Doorbhash Nagar,  
Sector - II,  
Raebareli - 229 010 (UP)  
T: (0535) 2702422/31  
F: (0535) 2702423/24/29

### **SHILLONG**

NIFT Campus,  
Old NEIGRIHMS Campus  
'C' Block, Pasteur Hills,  
Lawmali, Polo  
Shillong - 793 001, Meghalaya  
T: (0364) 2590240, 2591492  
F: (0364) 2590676

### **SRINAGAR**

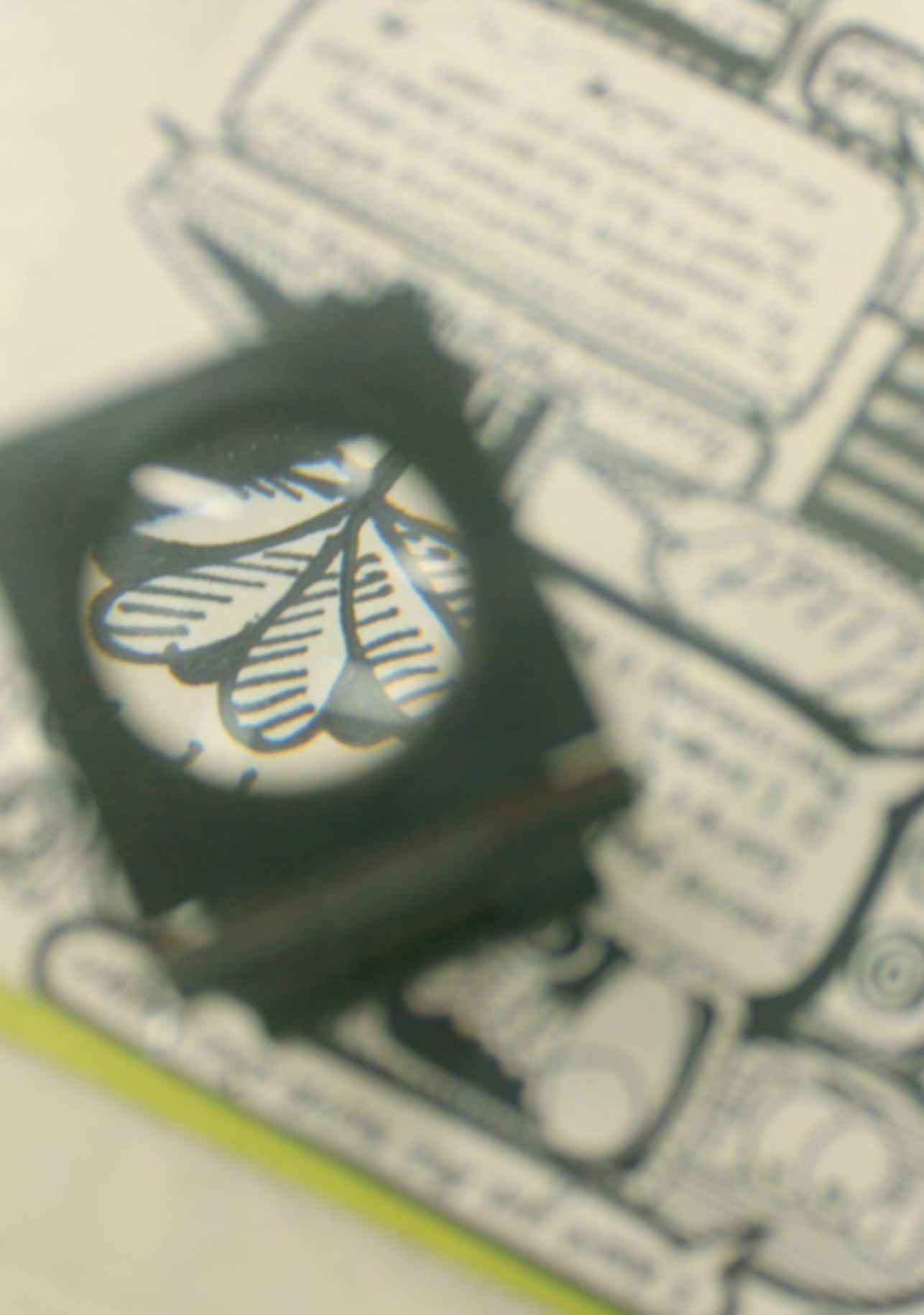
NIFT Campus,  
SIDCO, Electronic Complex,  
Rangreth, Srinagar- 191132 (J&K)  
T: 0914 2300116



## Admission Calendar- 2018

Online Registration	20th October, 2017
Last date for Online Registration	29th December, 2017
Last date for online registration with late fee of Rs.5000/- (in addition to the applicable application fee) through Credit/Debit Card only. In case of Demand Draft, the print out of the application alongwith DD should reach the given address before 02nd January, 2018	02nd January, 2018
Window to edit / update the Application Form	From 30th December, 2017 Saturday (12:00 hrs) till 2nd January, 2018 Tuesday (16:00 hrs)
Admit Card (Online only)	9th January, 2018
Written Entrance Examination for all UG & PG Programmes	21st January, 2018
Result of Written Entrance Examination	February/March, 2018
Situation Test / Group Discussion / Interview	April - May, 2018
Declaration of Final Result (Online)	End of May / June, 2018
Counselling	End of May /June 2018 Onwards
Note: Admit Cards, Results and Counselling Schedule will be available on NIFT's website only. No separate communication will be sent by post.	





[www.nift.ac.in](http://www.nift.ac.in)

Bengaluru . Bhopal . Bhubaneswar . Chennai . Gandhinagar . Hyderabad . Jodhpur . Kangra  
Kannur . Kolkata . Mumbai . New Delhi . Patna . Raebareli . Shillong . Srinagar (J&K)